

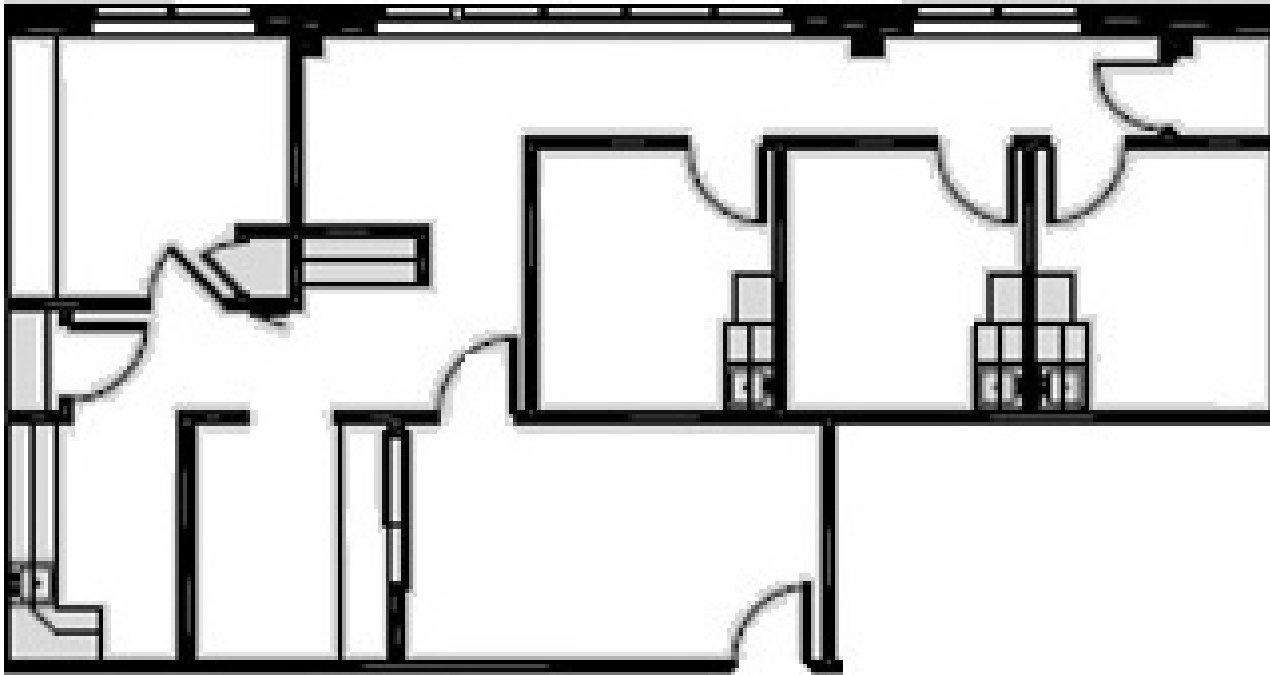
SUITE 230 | 1,412 SF

2001 N GARY AVE | WHEATON, IL



SPACE NOTES

- 3 Exam Rooms
- Nurse Station
- Large Waiting Room
- Anchored by Northwestern Medicine



JOHN MILLNER

630.480.6342

JMillner@VersaRES.com

RYAN MOEN

630.480.6346

RMoen@VersaRES.com

**1 MID AMERICA PLAZA, 3RD FLOOR
OAKBROOK TERRACE, IL 60181
630.480.6413**

EXCLUSIVELY LISTED BY

VERSA
REAL ESTATE SERVICES