


Office space

 JLL SEE A BRIGHTER WAY

**For sublease**

333 Washington Ave N, Suite 104,  
Minneapolis, MN

**1,929 SF Available**



# Building specifications

**Building Address** 333 Washington Ave N, Suite 104  
Minneapolis, MN 55401

**Building Size** 70,800 SF

**Available SF** 1,929 SF

**Year Built** 1895/1987

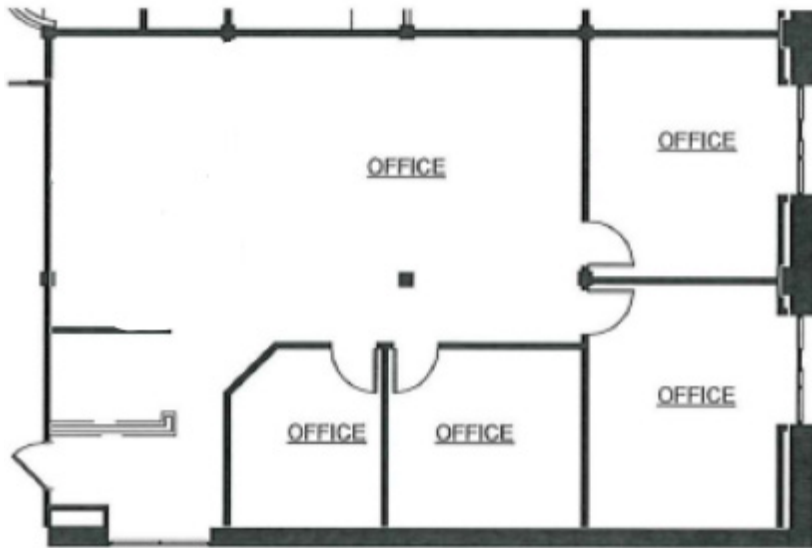
**Sublease Rate** Negotiable

**Available** Now

**Available Through** 10/31/2028

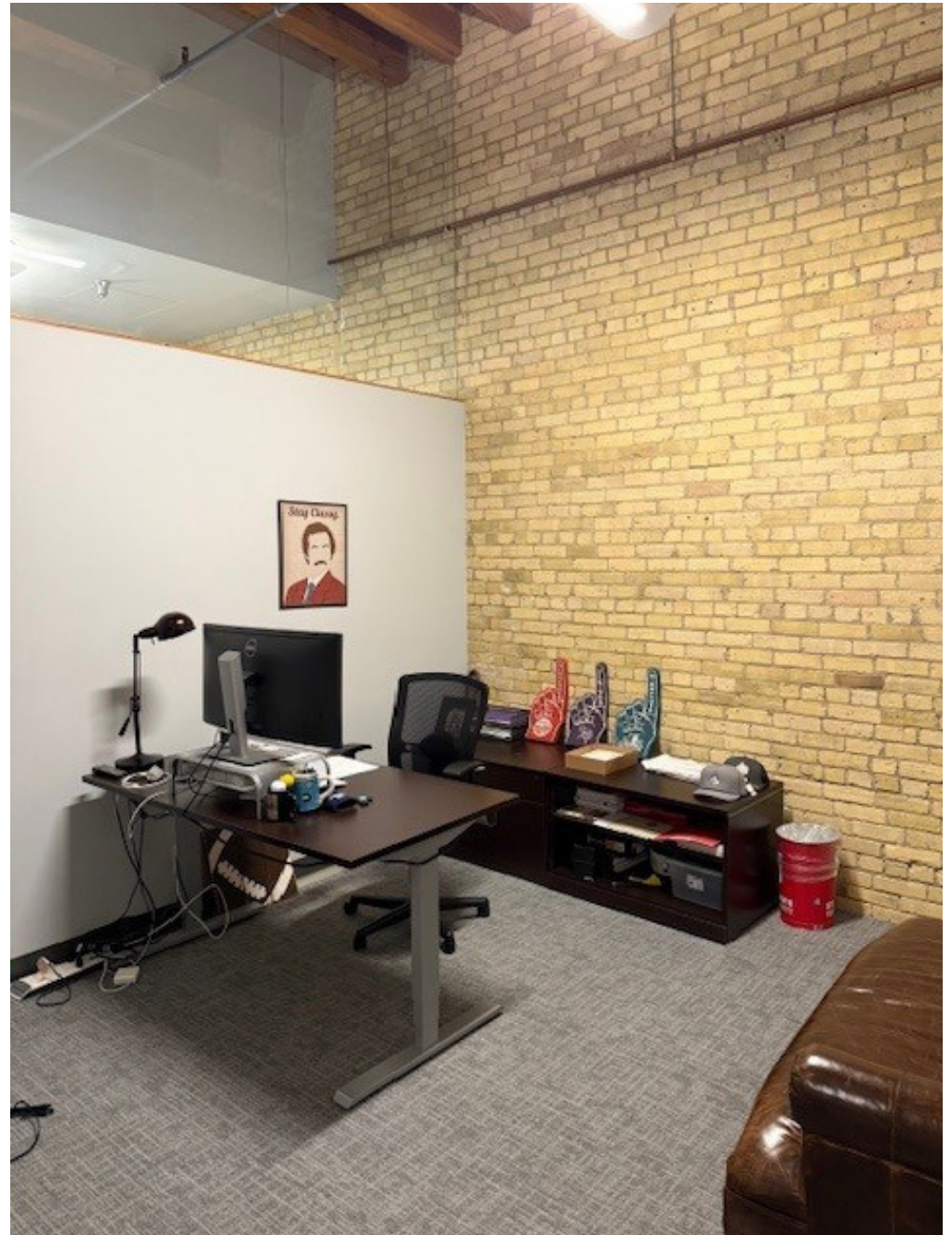


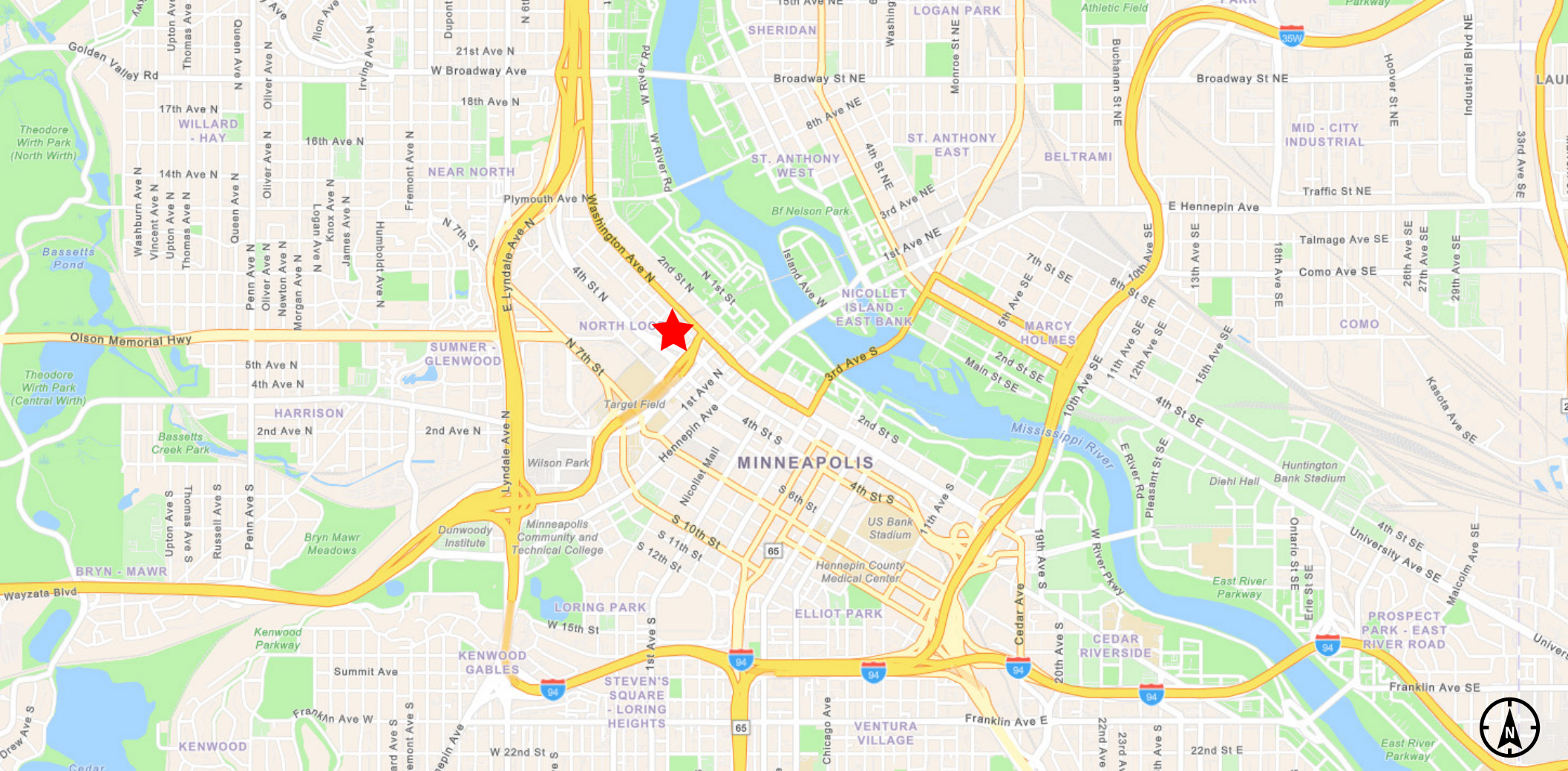
## Floor plan




### Space highlights

- Eight (8) workstations
- Furniture included
- Four (4) private offices
- Kitchenette
- Phone booth





 **JLL** SEE A BRIGHTER WAY

**Connor Ott**  
Senior Vice President  
+1 612 217 6741  
connor.ott@jll.com

**Mason Hardacre**  
Associate  
+1 612 217  
mason.hardacre@jll.com

**JLL**  
250 Nicollet Mall  
Suite 1000  
Minneapolis, MN 55401

Jones Lang LaSalle Americas, Inc. License #: CO508577000