

## OAKLAND INDUSTRIAL PARK AKA AFFORDABLE WAREHOUSES

1900-2261 NW 29TH STREET, OAKLAND PARK, FL 33311

2258 NW 29TH STREET



## SPACE HIGHLIGHTS

- 900 SF
- corner unit
- 138 SF office
- 10' x 12' grade level overhead door
- 16'2" clear ceiling in warehouse
- LED lighting
- Private restroom
- Storage
- Close to I-95 and Turnpike



## ANGIE WEAVER

Lauderdale Lakes and Lauderhill Manager  
Direct: 954.485.9200 | Cell: 917.645.2339  
angie@levyrai.com

## HALEY PRESSER

Property Manager / Sales Associate  
Direct: 954.485.9200 | Cell: 954.254.5396  
Haley@levyrai.com



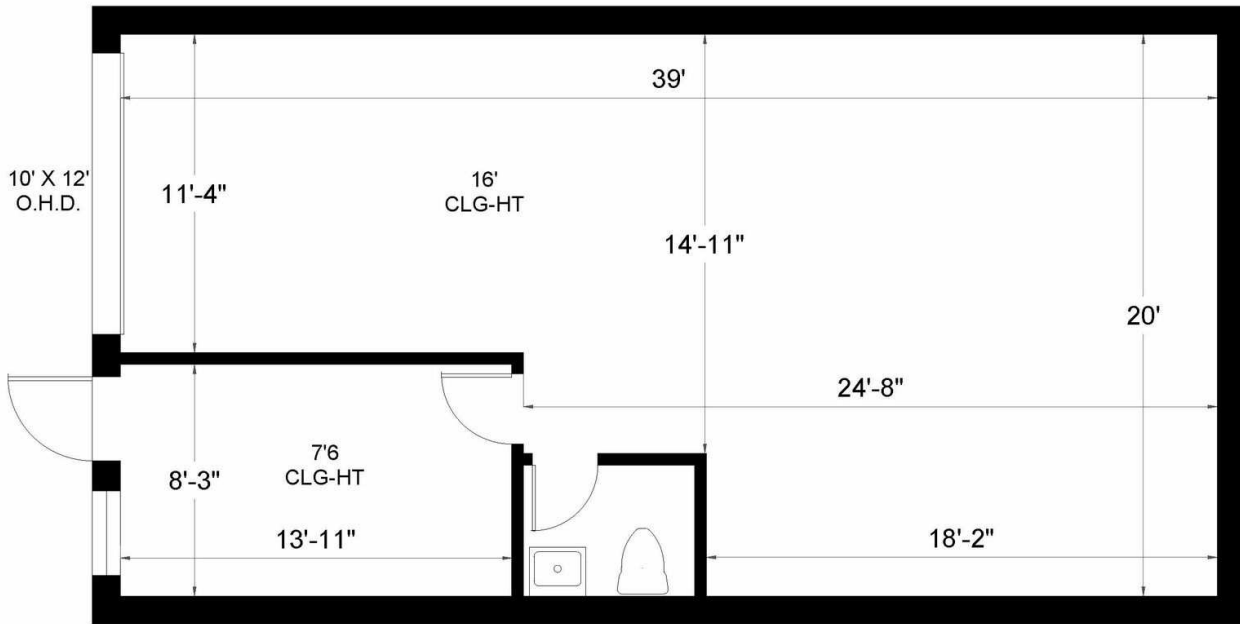
# OAKLAND INDUSTRIAL PARK AKA AFFORDABLE WAREHOUSES

1900-2261 NW 29TH STREET, OAKLAND PARK, FL 33311

## 2258 NW 29TH STREET FLOOR PLAN

### AFFORDABLE WAREHOUSE

2258 NW 29th Street | Oakland Park, FL 33311



Office - 138 Sq. Ft.  
Warehouse - 762 Sq. Ft.

900 Rentable Sq. Ft.

#### ANGIE WEAVER

Lauderdale Lakes and Lauderhill Manager  
Direct: 954.485.9200 | Cell: 917.645.2339  
angie@levyrai.com

#### HALEY PRESSER

Property Manager / Sales Associate  
Direct: 954.485.9200 | Cell: 954.254.5396  
Haley@levyrai.com

