

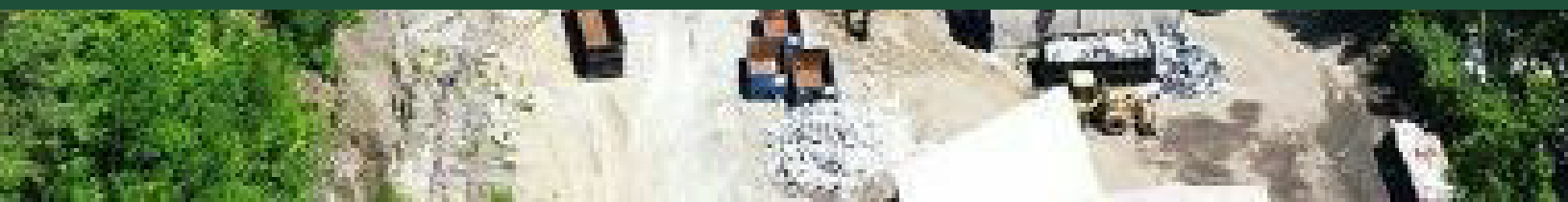
# 365

**CODMAN HILL RD**  
*BOXBOROUGH, MA*



COMMERCIAL  
**O'BRIEN**  
PROPERTIES, INC

**Land For Sale**



# SUMMARY / SPECIFICATIONS

365 CODMAN HILL RD BOXBOROUGH, MA



## PROPERTY DESCRIPTION

O'Brien Commercial Properties is pleased to offer 365 Codman Hill Road for sale. The property totals 4.77 acres of Commercial land spread across two parcels in Boxborough as well as Harvard, MA. The property is the Ideal location for a contractors/landscapers yard with easy access to route 111 and I-495. Of the 4.77 acres, 1 is considered usable, with the potential for expansion in the future.

## PROPERTY HIGHLIGHTS

- SIZE: 4.77 AC
- USABLE: 1 AC
- ZONE: I/C
- LOCATION: 1 MILE OFF OF ROUTE 495 AND STATE ROUTE 111
- BUILDING: EXISTING CONCRETE SLAB
- FRONTAGE: ~464'

## OFFERING SUMMARY

Sale Price: Subject To Offer  
Lot Size: 4.77 Acres

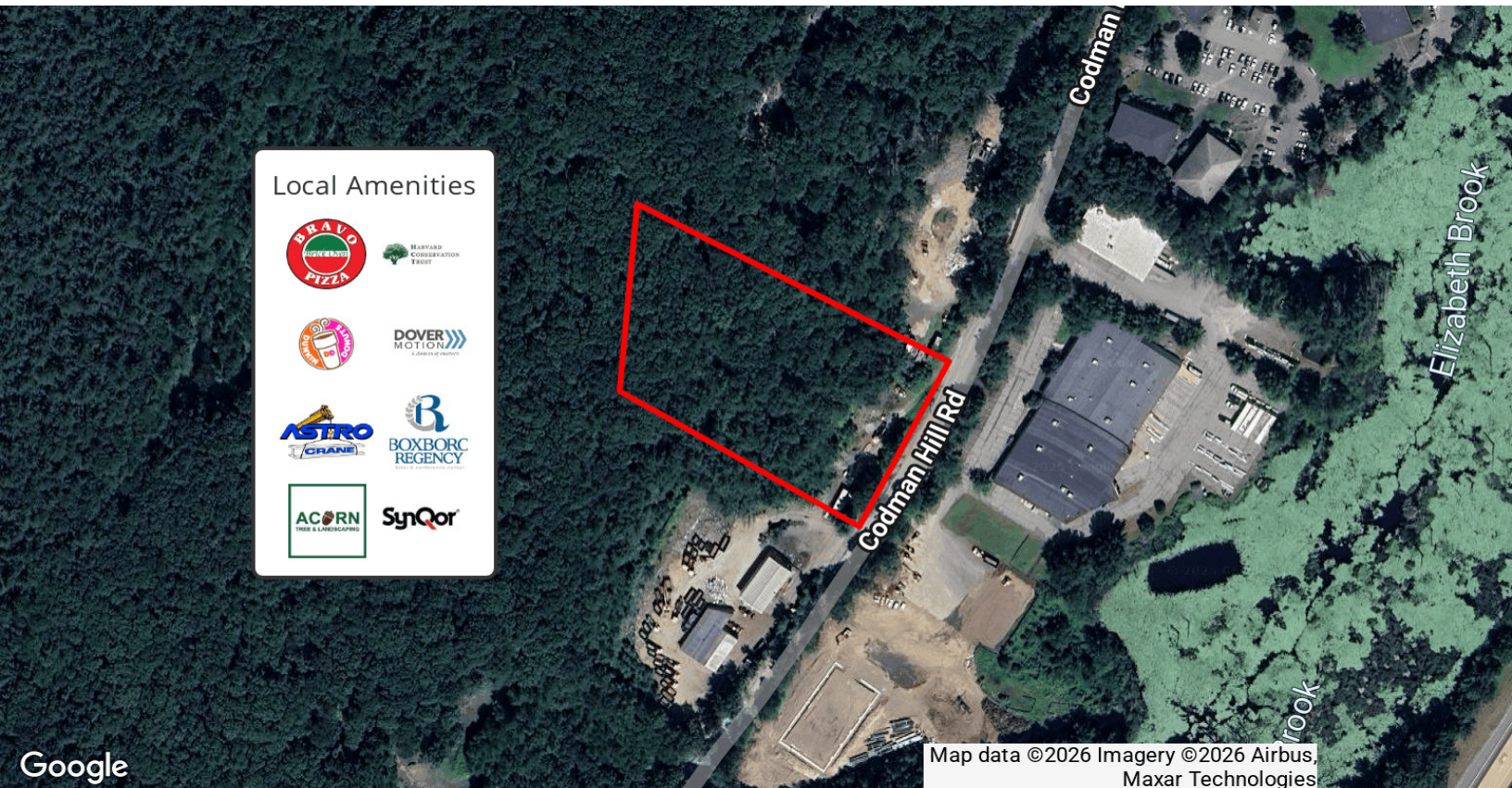
DEMOGRAPHICS	0.3 MILES	0.5 MILES	1 MILE
Total Households	60	89	332
Total Population	140	213	792
Average HH Income	\$272,554	\$266,141	\$217,477

**ROB MCGARRY**  
Vice President  
rob@obriencommercial.com  
Mobile: 978.209.3211

COMMERCIAL  
**O'BRIEN**  
PROPERTIES, INC

# PROPERTY / LOCATION

365 CODMAN HILL RD BOXBOROUGH, MA



Local Amenities

-  BRAVO PIZZERIA
-  HARVARD CONSERVATION TRUST
-  DOVER MOTION
-  ASTRO CRANE
-  BOXBORC REGENCY
-  ACORN TREE & LANDSCAPING
-  SynQor

Google

Map data ©2026 Imagery ©2026 Airbus, Maxar Technologies

**ROB MCGARRY**  
Vice President  
rob@obriencommercial.com  
Mobile: 978.209.3211





# 365 CODMAN HILL ROAD

*BOXBOROUGH, MA*



**ROB MCGARRY**

Vice President

Mobile: 978.209.3211

[rob@obriencommercial.com](mailto:rob@obriencommercial.com)

We obtained the information above from sources we believe to be reliable. However, we have not verified its accuracy and make no guarantee, warranty or representation about it. It is submitted subject to the possibility of errors, omissions, change of price, rental or other conditions, prior sale, lease or financing, or withdrawal without notice. We include projections, opinions, assumptions or estimates for example only, and they may not represent current or future performance of the property. You and your tax and legal advisors should conduct your own investigation of the property and transaction.