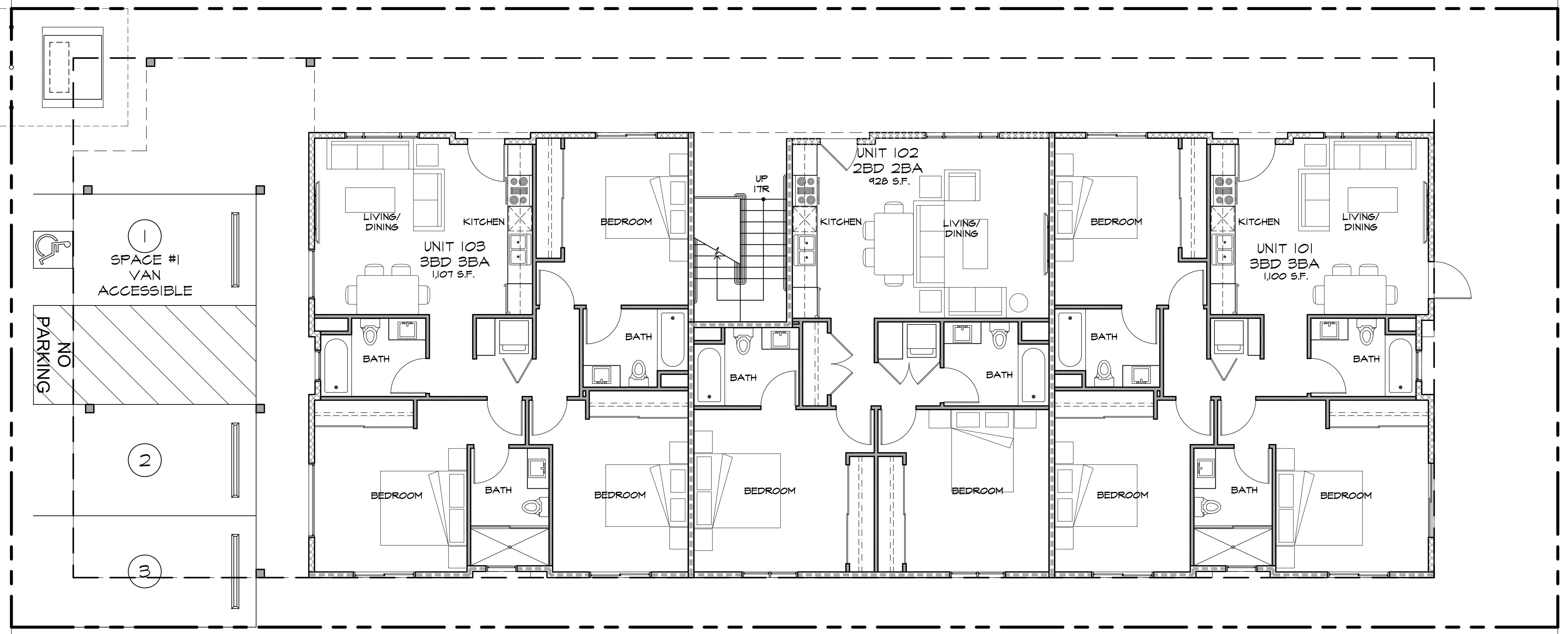


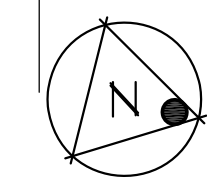
PROPRIETARY DESIGN. THE DRAWING, DESIGN, AND INFORMATION CONTAINED ON THIS SHEET ARE THE PROPERTY OF GOLBA ARCHITECTURE AND ARE DEVELOPED FOR USE ON, AND IN CONNECTION WITH THIS SPECIFIC PROJECT, AND ARE DISCLOSED IN CONFIDENCE AND SHALL NOT BE COPIED, REPRODUCED, PUBLISHED, OR OTHERWISE USED, DIRECTLY OR INDIRECTLY, IN WHOLE OR IN PART TO PROVIDE INFORMATION TO PRODUCE, CONSTRUCT, OR MANUFACTURE DRAWINGS, PRINTS, APPARATUS, PARTS, OR ASSEMBLIES WITHOUT THE FULL KNOWLEDGE AND WRITTEN CONSENT OF GOLBA ARCHITECTURE. THIS DRAWING IS PROTECTED BY COMMON LAW COPYRIGHT. ALL PATENTABLE MATERIAL CONTAINED HEREIN AND ORIGINATING WITH GOLBA ARCHITECTURE SHALL BE THE PROPERTY OF GOLBA ARCHITECTURE. ANY USE OF MATERIAL SHALL BE SUBJECT TO ROYALTY PAYMENTS TO GOLBA ARCHITECTURE.

ALLEY

FELSPAR STREET



1ST FLOOR PLAN
SCALE: 3/16"=1'-0"



| UNIT MATRIX | | | | |
|-------------------|--------------|--------------|--------------|-------|
| UNIT TYPE \ FLOOR | 2 BED 1 BATH | 2 BED 2 BATH | 3 BED 3 BATH | TOTAL |
| 1ST | -- | 1 | 2 | 3 |
| 2ND | 1 | 1 | 2 | 4 |
| 3RD | 1 | 1 | 2 | 4 |
| TOTAL | 2 | 3 | 6 | 11 |
| AVG. S.F. | 726 | 873 | 1,044 | |

GOLBA ARCHITECTURE
 Architecture ■ Space Planning ■ Interior Design
 1940 Garnet Ave. #100 San Diego California 92109
 Phone: (619) 231-9905 Fax: (858) 750-3471

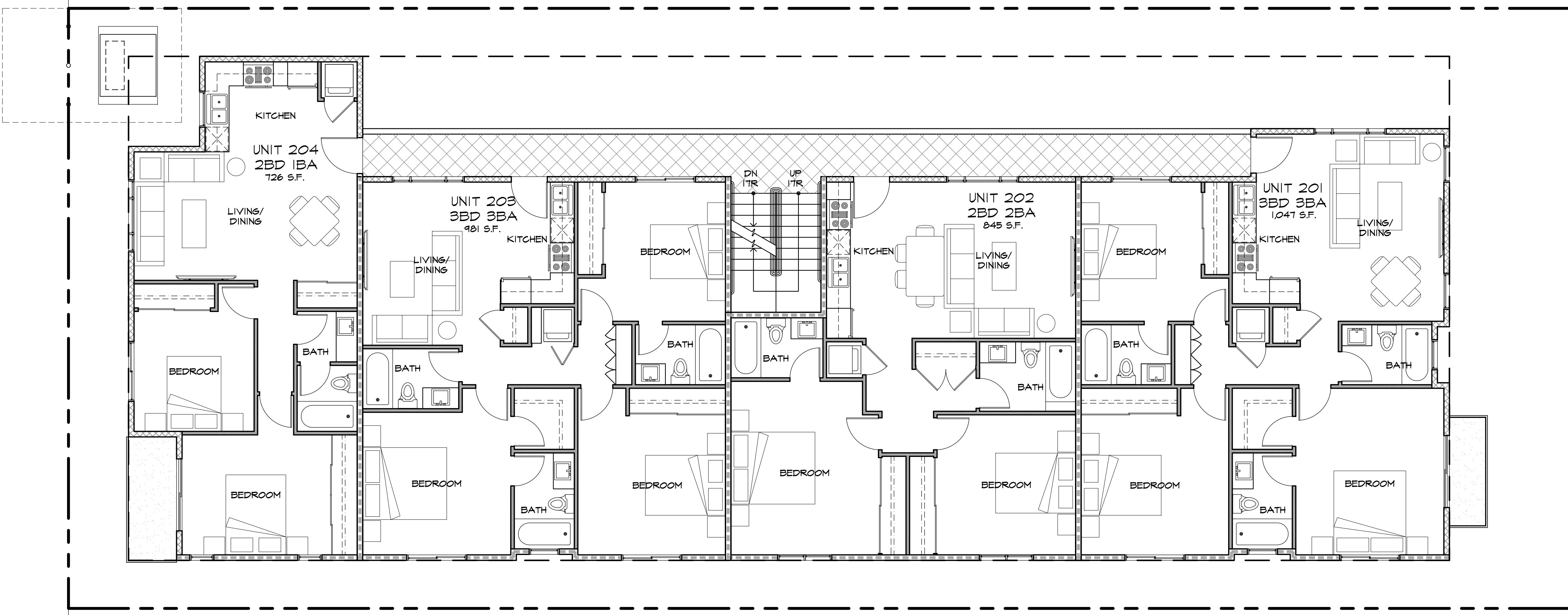
2109 FELSPAR UNITS
 2109 FELSPAR STREET
 SAN DIEGO, CA 92109

DATE: 05-14-26

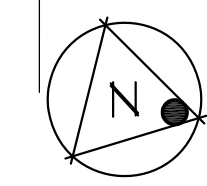
PROPRIETARY DESIGN. THE DRAWING, DESIGN, AND INFORMATION CONTAINED ON THIS SHEET ARE THE PROPERTY OF GOLBA ARCHITECTURE AND ARE DEVELOPED FOR USE ON, AND IN CONNECTION WITH THIS SPECIFIC PROJECT, AND ARE DISCLOSED IN CONFIDENCE AND SHALL NOT BE COPIED, REPRODUCED, PUBLISHED, OR OTHERWISE USED, DIRECTLY OR INDIRECTLY, IN WHOLE OR IN PART TO PROVIDE INFORMATION TO PRODUCE, CONSTRUCT, OR MANUFACTURE DRAWINGS, PRINTS, APPARATUS, PARTS, OR ASSEMBLIES WITHOUT THE FULL KNOWLEDGE AND WRITTEN CONSENT OF GOLBA ARCHITECTURE. THIS DRAWING IS PROTECTED BY COMMON LAW COPYRIGHT. ALL PATENTABLE MATERIAL CONTAINED HEREIN AND ORIGINATING WITH GOLBA ARCHITECTURE SHALL BE THE PROPERTY OF GOLBA ARCHITECTURE. ANY USE OF MATERIAL SHALL BE SUBJECT TO ROYALTY PAYMENTS TO GOLBA ARCHITECTURE.

ALLEY

FELSPAR STREET



2ND & 3RD FLOOR PLAN
SCALE: 3/16"=1'-0"



| UNIT MATRIX | | | | |
|-------------|-----------------|-----------------|-----------------|-------|
| UNIT TYPE | 2 BED 1 BATH | 2 BED 2 BATH | 3 BED 3 BATH | TOTAL |
| FLOOR | | | | |
| 1ST | -- | | 2 | 3 |
| 2ND | | | 2 | 4 |
| 3RD | | | 2 | 4 |
| TOTAL | 2 | 3 | 6 | 11 |
| AVG. S.F. | 726 | 873 | 1,044 | |

GOLBA ARCHITECTURE
Architecture ■ Space Planning ■ Interior Design
1940 Garnet Ave. #100 San Diego California 92109
Phone: (619) 231-9905 Fax: (858) 750-3471

2109 FELSPAR UNITS
2109 FELSPAR STREET
SAN DIEGO, CA 92109

DATE: 05-14-26