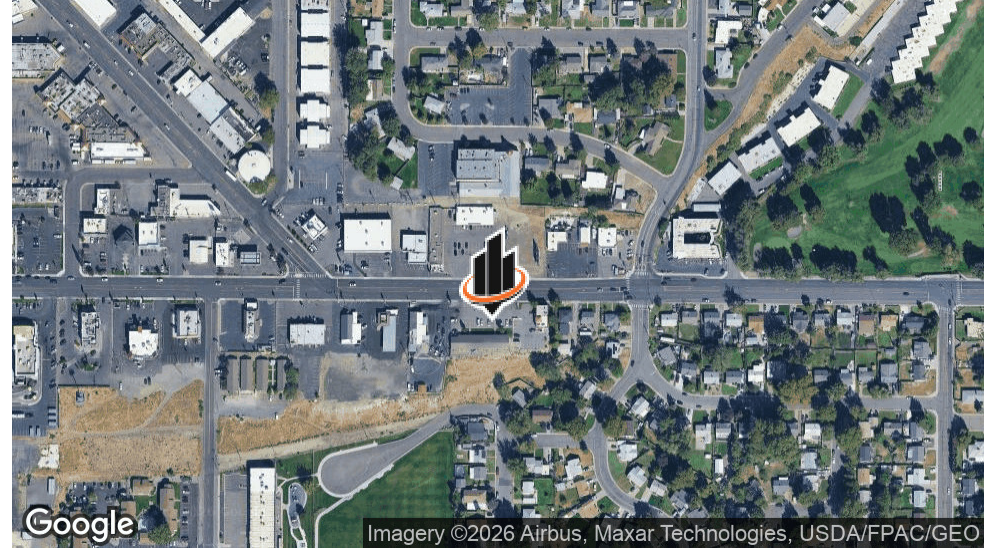


# PROPERTY SUMMARY



## OFFERING SUMMARY

<b>LEASE RATE:</b>	\$2,600 per month (NNN)
<b>NNN:</b>	\$315 per month
<b>AVAILABLE SF:</b>	2,192 SF
<b>LOT SIZE:</b>	0.985 Acres

## PROPERTY DESCRIPTION

Move in ready retail, office or professional space. Excellent access and visibility from Kennewick Avenue.

## PROPERTY HIGHLIGHTS

- 2,192 SF Suite
- Move In Ready
- High Traffic & High Visibility
- Ample Parking

### ROB ELLSWORTH, CCIM

O: 509.430.2378

rob.ellsworth@svn.com

WA #17790