

EAST BELT BUSINESS PARK

1465 EAST SAM HOUSTON PARKWAY SOUTH | SUITE 190 | PASADENA, TX 77503

 TRANSWESTERN

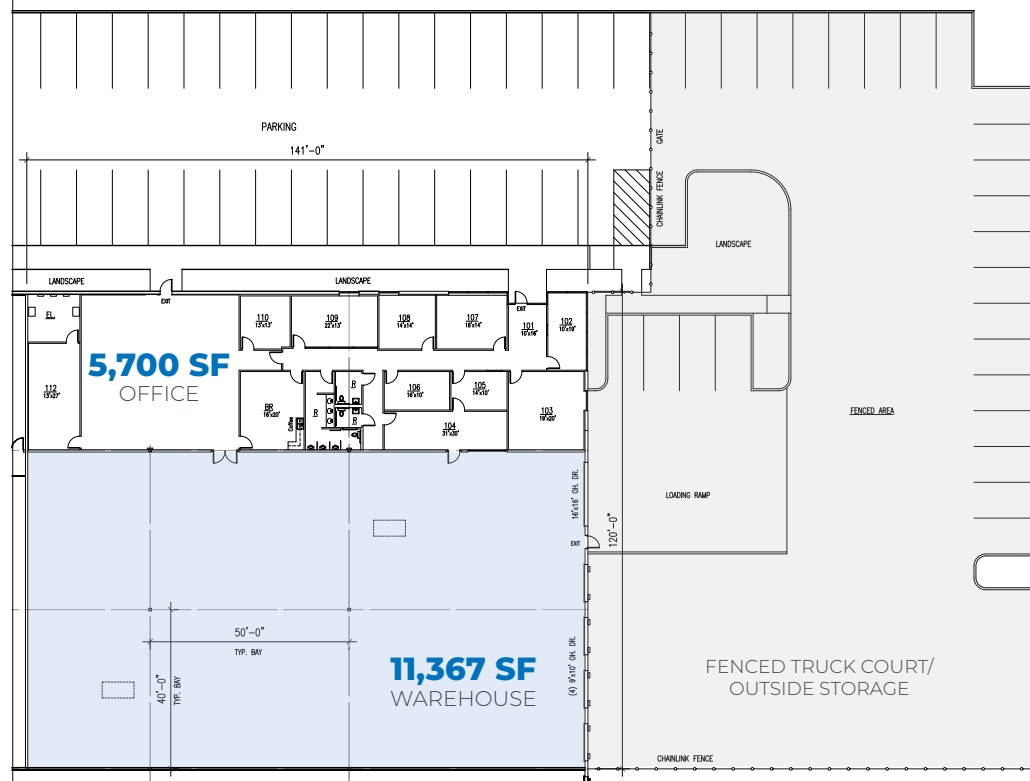


FOR LEASE | 17,067 SF Office/Warehouse Space Near the Port of Houston

EAST BELT BUSINESS PARK

1465 EAST SAM HOUSTON PARKWAY SOUTH | SUITE 190 | PASADENA, TX 77503

FLOOR PLAN



PROPERTY FEATURES

- 17,067 SF Total
- 5,700 SF Office
- 11,367 SF Warehouse
- (4) 9' x 10' Dock High Loading Doors
- (1) 16' x 16' Ramp Door
- 24' Clear Height
- ESRF Sprinkler System
- Fenced, Secured, & Private Truck Court
- End Cap Suite
- Proximity to Barbours Cut and Bayport Container Terminals

T TRANSWESTERN
LEASING CONTACTS

CRAIG BEAN
713.490.3784
CRAIG.BEAN@TRANSWESTERN.COM

BRIAN GAMMILL
713.270.3321
BRIAN.GAMMILL@TRANSWESTERN.COM

DARRYL NOON
713.270.3325
DARRYL.NOON@TRANSWESTERN.COM

EAST BELT BUSINESS PARK

1465 EAST SAM HOUSTON PARKWAY SOUTH | SUITE 190 | PASADENA, TX 77503

AERIAL MAP



T TRANSWESTERN
LEASING CONTACTS

CRAIG BEAN
713.490.3784
CRAIG.BEAN@TRANSWESTERN.COM

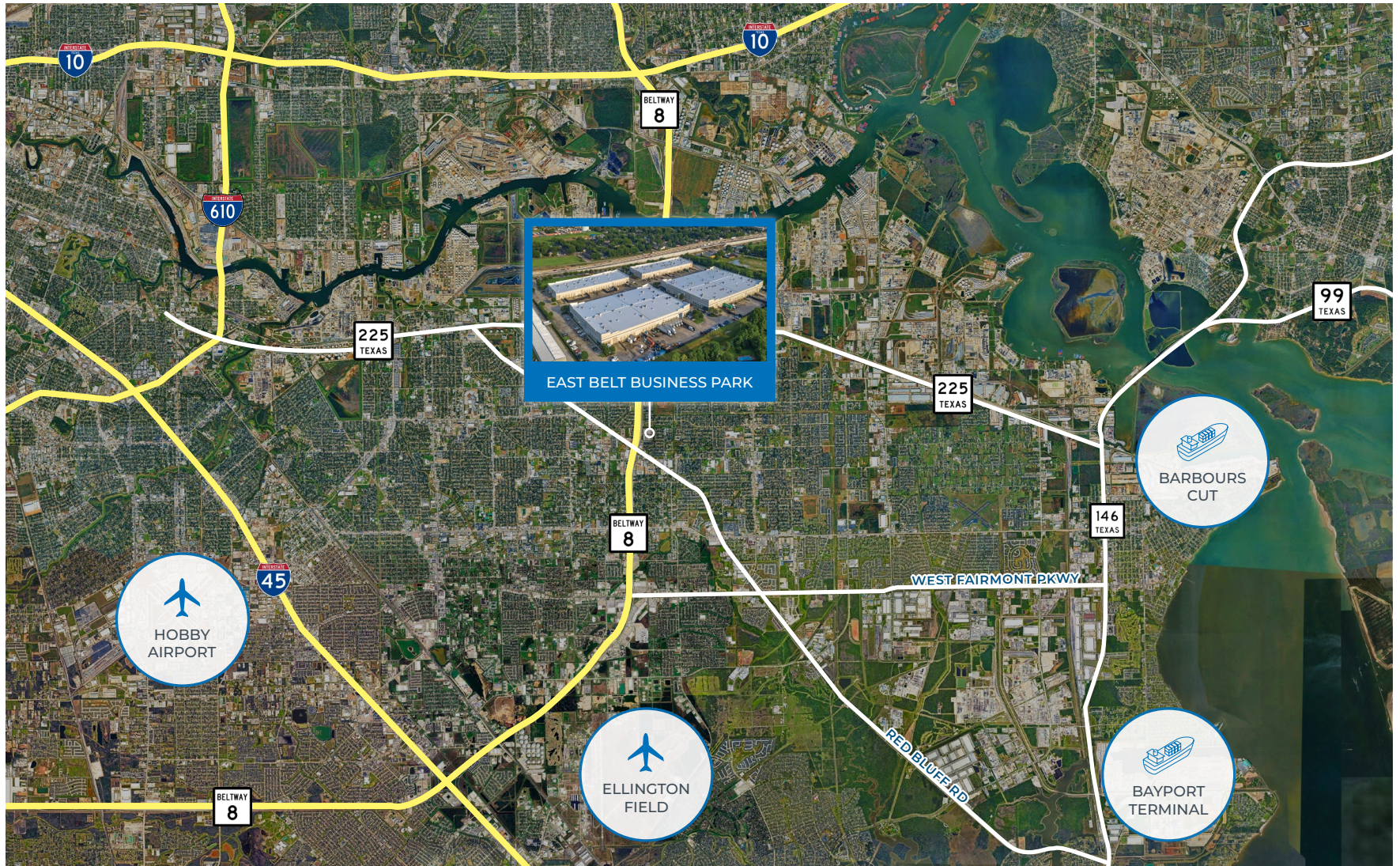
BRIAN GAMMILL
713.270.3321
BRIAN.GAMMILL@TRANSWESTERN.COM

DARRYL NOON
713.270.3325
DARRYL.NOON@TRANSWESTERN.COM

EAST BELT BUSINESS PARK

1465 EAST SAM HOUSTON PARKWAY SOUTH | SUITE 190 | PASADENA, TX 77503

LOCATION



TRANSWESTERN
LEASING CONTACTS

CRAIG BEAN
713.490.3784
CRAIG.BEAN@TRANSWESTERN.COM

BRIAN GAMMILL
713.270.3321
BRIAN.GAMMILL@TRANSWESTERN.COM

DARRYL NOON
713.270.3325
DARRYL.NOON@TRANSWESTERN.COM