

Prime Retail Space | For Lease

1300 Sherbrooke Street West
Montreal (Québec)

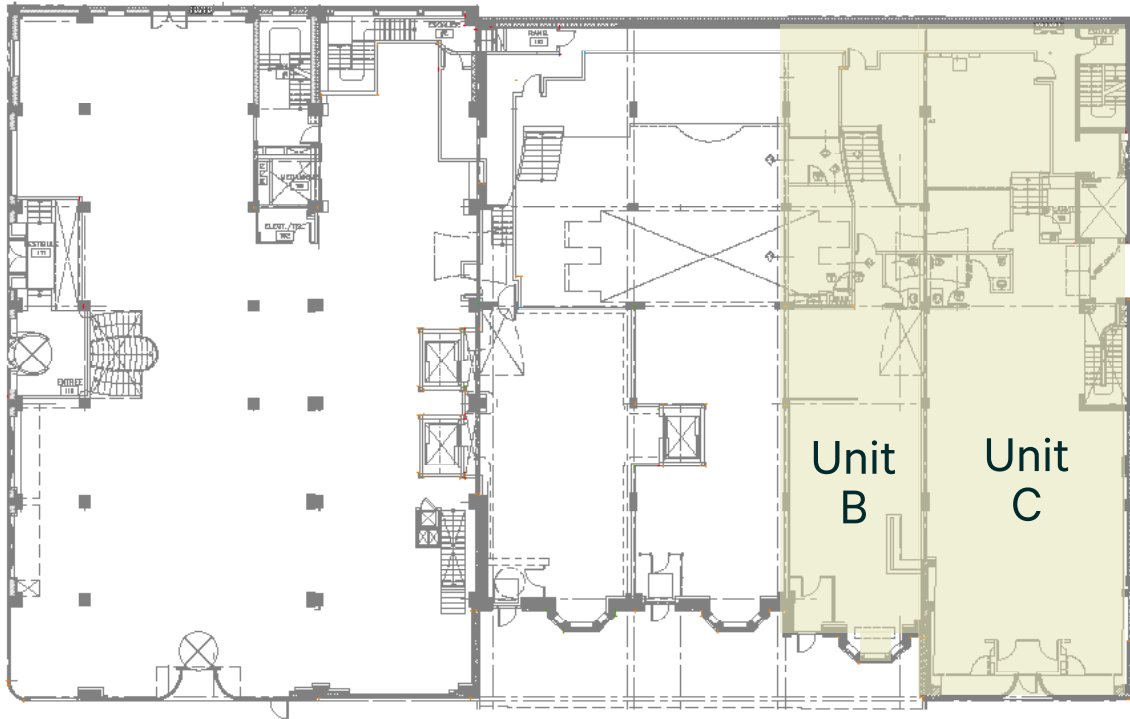


Lease Terms

Term	5 - 10 years
Unit B	
Ground Floor	2,493 sq. ft.
Basement	1,737 sq. ft.
Unit C	
Ground Floor	3,405 sq. ft.
Basement	2,084 sq. ft.
Unit B + C	
Ground Floor	5,898 sq. ft.
Basement	3,821 sq. ft.
Semi-Gross Rent	
Ground Floor	\$100.00 per sq. ft.
Basement	\$30.00 per sq. ft.
Hydro	Metered
Availability	Immediate

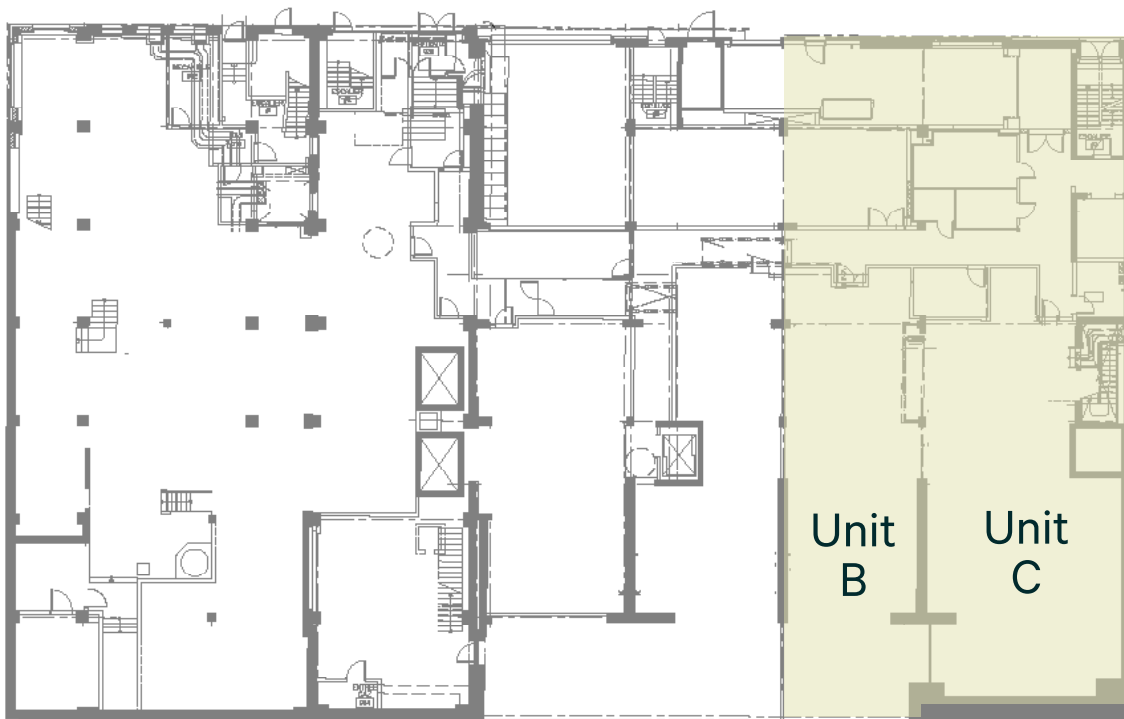


Ground Floor



Sherbrooke Street West

Basement



Sherbrooke Street West



Property Details



Located on Sherbrooke West between Crescent and De la Montagne Streets



Ample underground parking availability and easy-to-access bicycle storage



Prominent signage opportunities on Sherbrooke and de la Montagne



Steps away from Guy-Concordia and Peel metro stations



Façade measuring at least 80 feet along Sherbrooke Street West and 37 feet along De La Montagne



Ceiling height of 16 feet

1300 Sherbrooke Street West
Montreal (Québec)



Renderings





Contact Us

Christopher Rundle
Vice President
Real Estate Broker
+1 514 375 0818
christopher.rundle@cbre.com

Bryan Greenberg
Associate Vice President
Commercial Real Estate Broker
+1 514 375 2507
bryan.greenberg@cbre.com

Amanda Angela Herbu
Associate
Commercial Real Estate Broker
+1 514 375 0456
amanda.herbu@cbre.com

CBRE Limited, Real Estate Agency | 1250 René-Lévesque Blvd West, Suite 2800 | Montréal, Québec H3B 4W8 | +1 514 849 6000 | www.cbre.ca

This disclaimer shall apply to CBRE Limited, Real Estate Agency, and to all other divisions of the Corporation; to include all employees and independent contractors ("CBRE"). The information set out herein, including, without limitation, any projections, images, opinions, assumptions and estimates obtained from third parties (the "Information") has not been verified by CBRE, and CBRE does not represent, warrant or guarantee the accuracy, correctness and completeness of the Information. CBRE does not accept or assume any responsibility or liability, direct or consequential, for the Information or the recipient's reliance upon the Information. The recipient of the Information should take such steps as the recipient may deem necessary to verify the Information prior to placing any reliance upon the Information. The Information may change and any property described in the Information may be withdrawn from the market at any time without notice or obligation to the recipient from CBRE. CBRE and the CBRE logo are the service marks of CBRE Limited and/or its affiliated or related companies in other countries. All other marks displayed on this document are the property of their respective owners. All Rights Reserved. Mapping Sources: Canadian Mapping Services canadamapping@cbre.com; DMTI Spatial, Environics Analytics, Microsoft Bing, Google Earth.