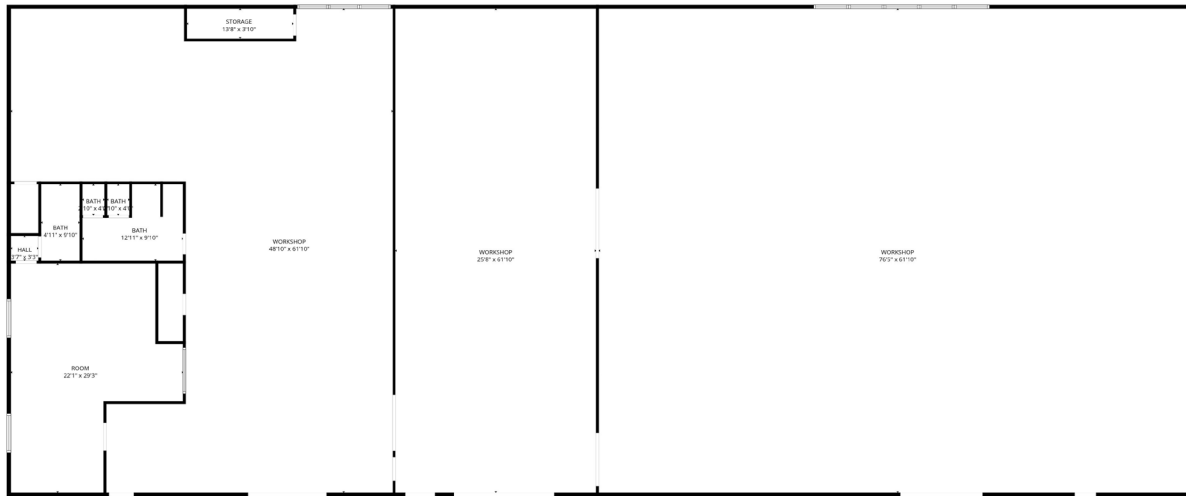
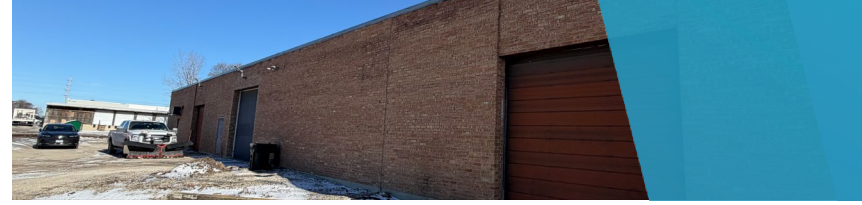
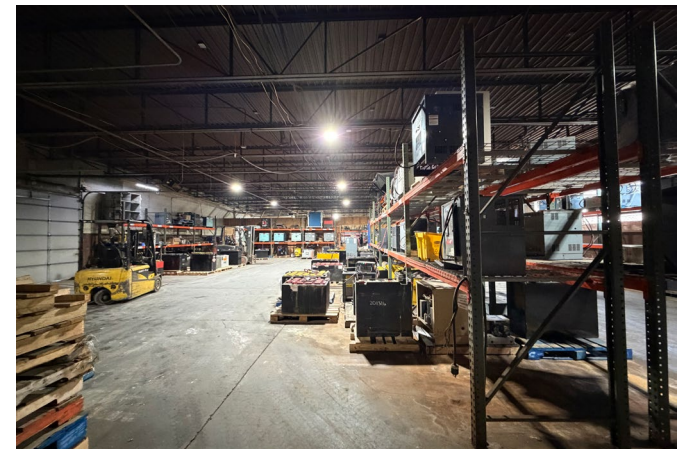


33W447 Roosevelt Rd
West Chicago, IL
10,000 SF



SPACE NOTES

- +/- 600 SF of Office Space
- 2 Overhead Doors (10' Height Door and 12' Height Door)
- 1 Recessed Dock (10' Height Door)
- 800 Amps at 240v House Panel (250amp stepped up to 480v)
- Situated on Over 1 Acre
- 13' Ceiling Height



RYAN MOEN, SIOR
630.480.6346
RMoen@VersaRES.com

STEVEN REA
630.468.1780
SRea@VersaRES.com

JOHN MILLNER, CCIM
630.480.6342
JMillner@VersaRES.com

1 MID AMERICA PLAZA, 3RD FLOOR
OAKBROOK TERRACE, IL 60181
630.480.6413

EXCLUSIVELY LISTED BY
VERSA
REAL ESTATE SERVICES