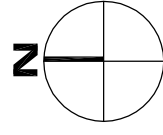
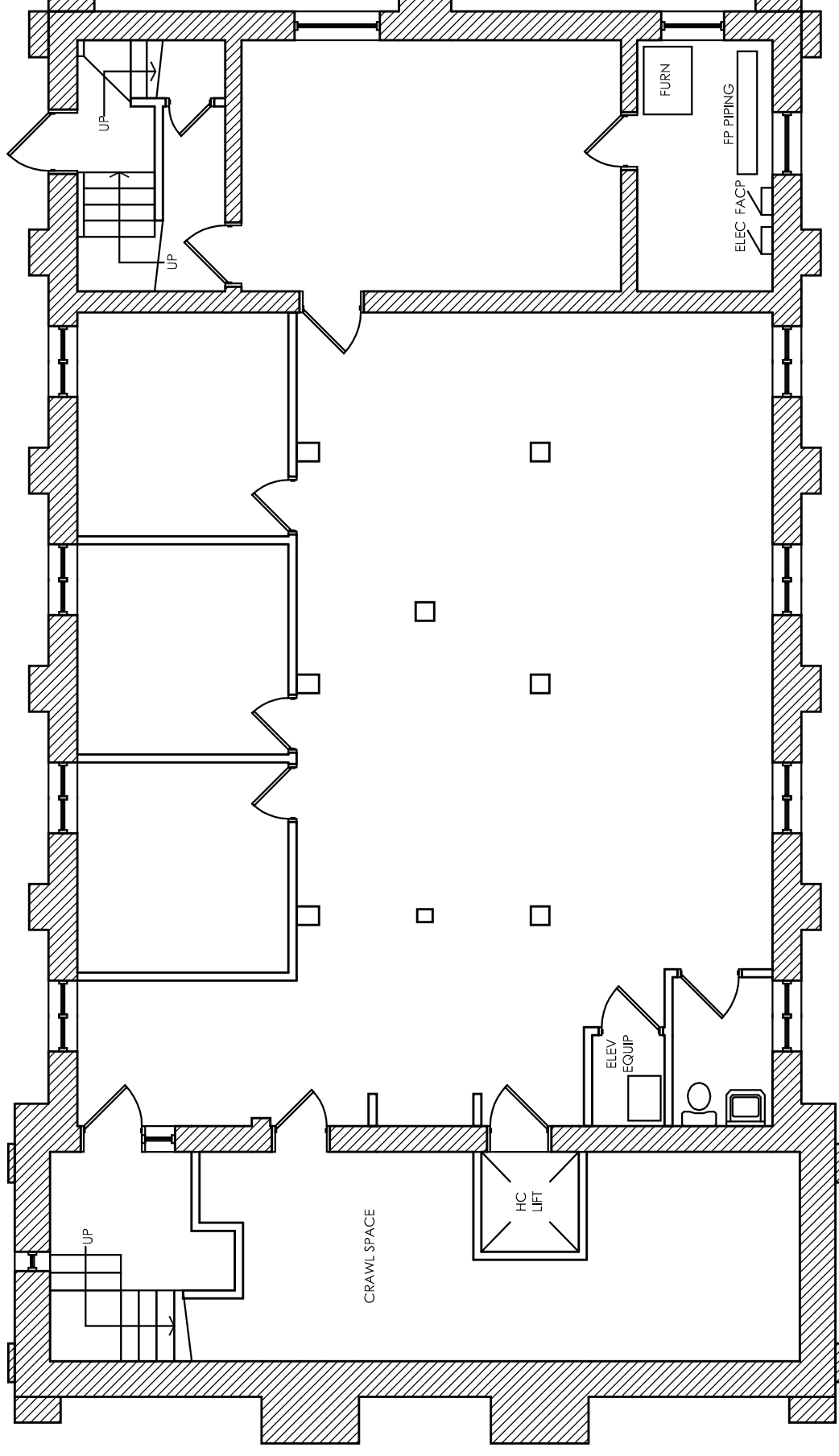


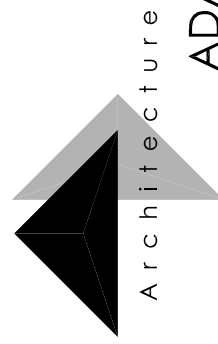
OFFICE BUILDING

30 N LINCOLN AVENUE

BATAVIA, ILLINOIS 60510



BASEMENT FLOOR PLAN
 $\frac{1}{8}'' = 1'-0''$ (2910 SF)



ADAMS DESIGN GROUP, LTD.

2243 Pepper Valley Drive Geneva Illinois 60134 630.244.7294t