



 **JLL** SEE A BRIGHTER WAY

# For Sublease

Corner Unit, Incredible Views

Available Immediately

5 – 10 Year Term

## 200 Park Avenue

### Partial 32nd Floor

#### Highlights

- » 5,854 RSF
- » 8 Offices
- » Conference Room
- » Breakout / Meeting Room
- » Wet Pantry
- » Furniture can be made available

#### Overview

Direct access to Grand Central. World-Class Infrastructure. Building Amenities include a Fitness Center, Skyline Terrace and Lounge, Events Center

#### **Bryan Murphy**

*Senior Associate*

bryan.murphy@jll.com

+1 (212) 292 7596

#### **Cara Murphy**

*Associate*

Cara.Murphy@jll.com

+1 (212) 418 2624

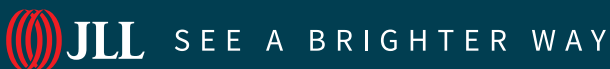
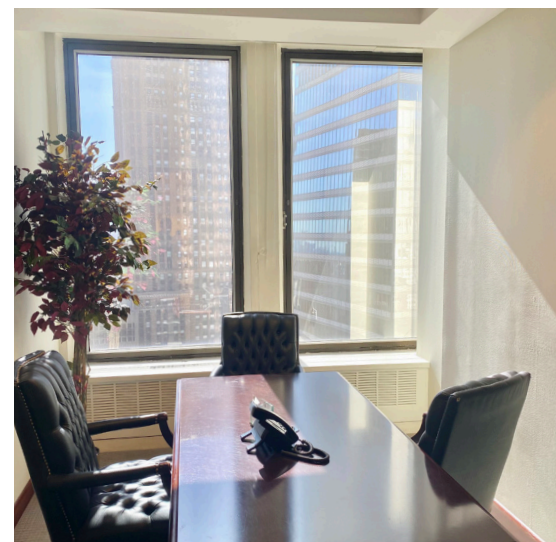
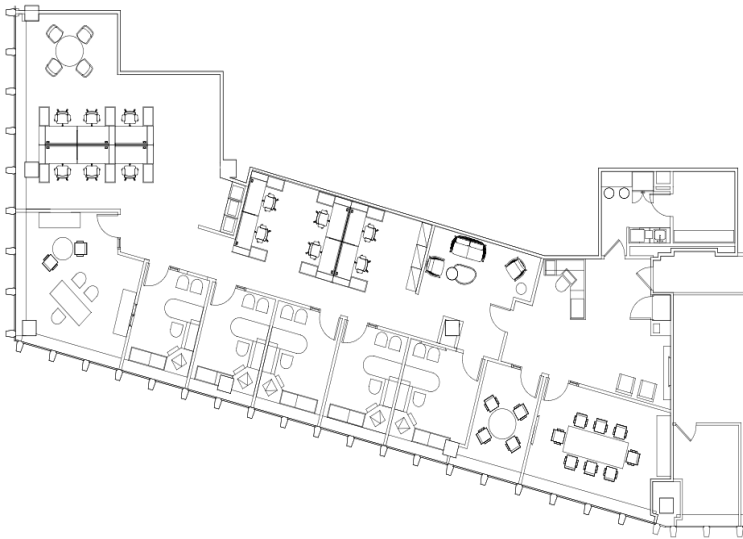
[jll.com](http://jll.com)

Jones Lang LaSalle Americas, Inc. License #: CO508577000

# 200 Park Avenue

## Tenant Amenties

- Lobby: 50K SF Lobby with greeting service for VIP guests.
- Avenue Lounge: A full-service gathering space for coffee, collaboration, and client meetings.
- Skyline Terrace + Lounge: One of Manhattan's largest outdoor spaces with full-service food & beverages.
- Skyline Meetings + Events Center: Includes private conference rooms, large boardrooms, fully-staffed multipurpose rooms for 200 – 600 people available for booking.
- Avenue Fitness + Wellness Center: Includes 15k RSF of fitness facilities as well as group fitness classes, massage therapy, personal training, and a recovery suite.



jll.com

**Bryan Murphy**  
Senior Associate  
bryan.murphy@jll.com  
+1 (212) 292 7596

**Cara Murphy**  
Associate  
Cara.Murphy@jll.com  
+1 (212) 418 2624

Jones Lang LaSalle Americas, Inc. License #: CO508577000