



OFFICE/WAREHOUSE FOR LEASE

9612 Titan Park Circle #4 | Littleton, CO 80125



CONTACT:

BRAD GILPIN

SENIOR VICE PRESIDENT

303.512.1196

bgilpin@uniqueprop.com

UNIQUE PROPERTIES

400 S. BROADWAY

DENVER, CO 80209

(p) 303.321.5888

(f) 303.321.5889

WWW.UNIQUEPROP.COM



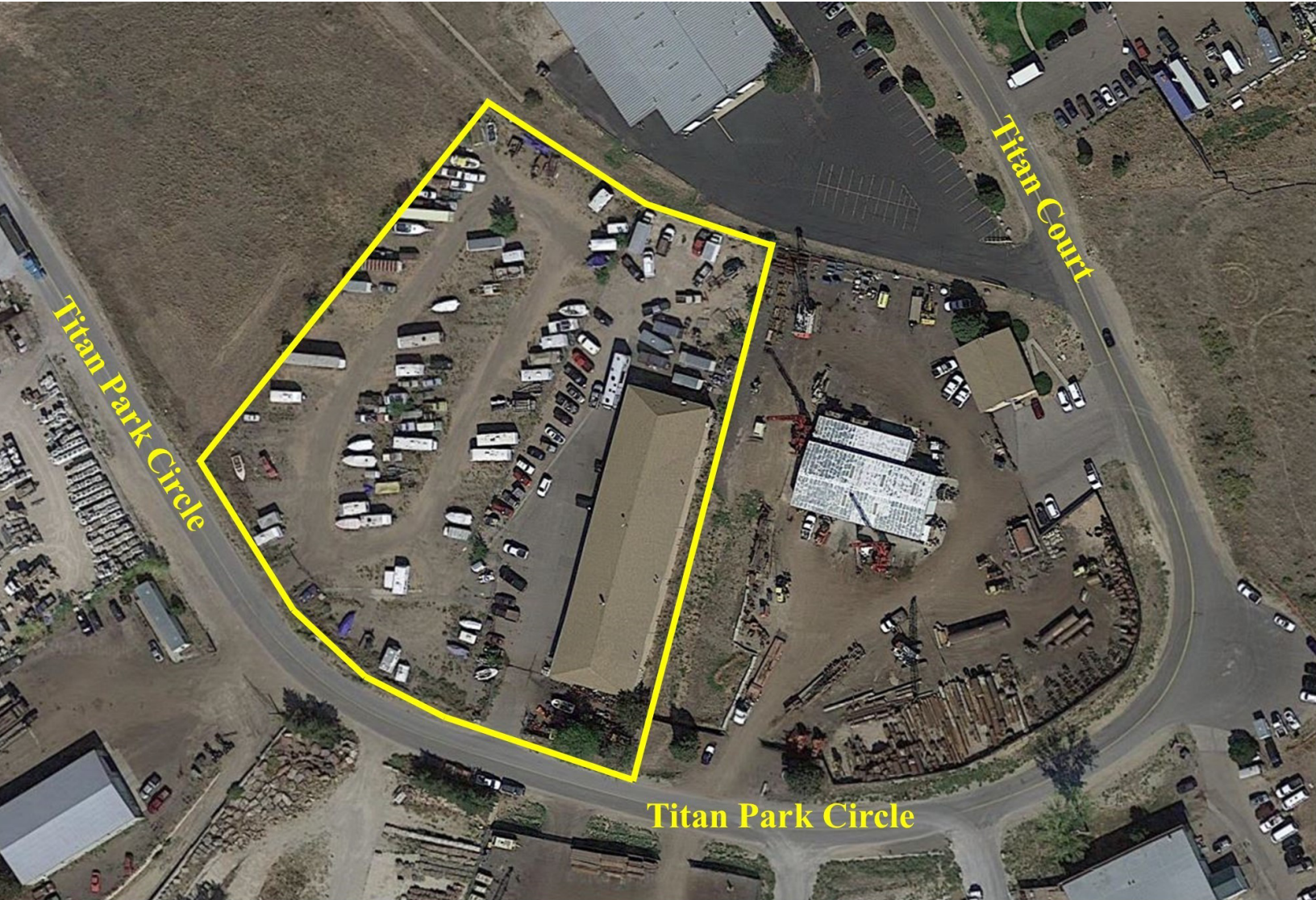
9612 TITAN PARK CIRCLE #4

OFFERING SUMMARY

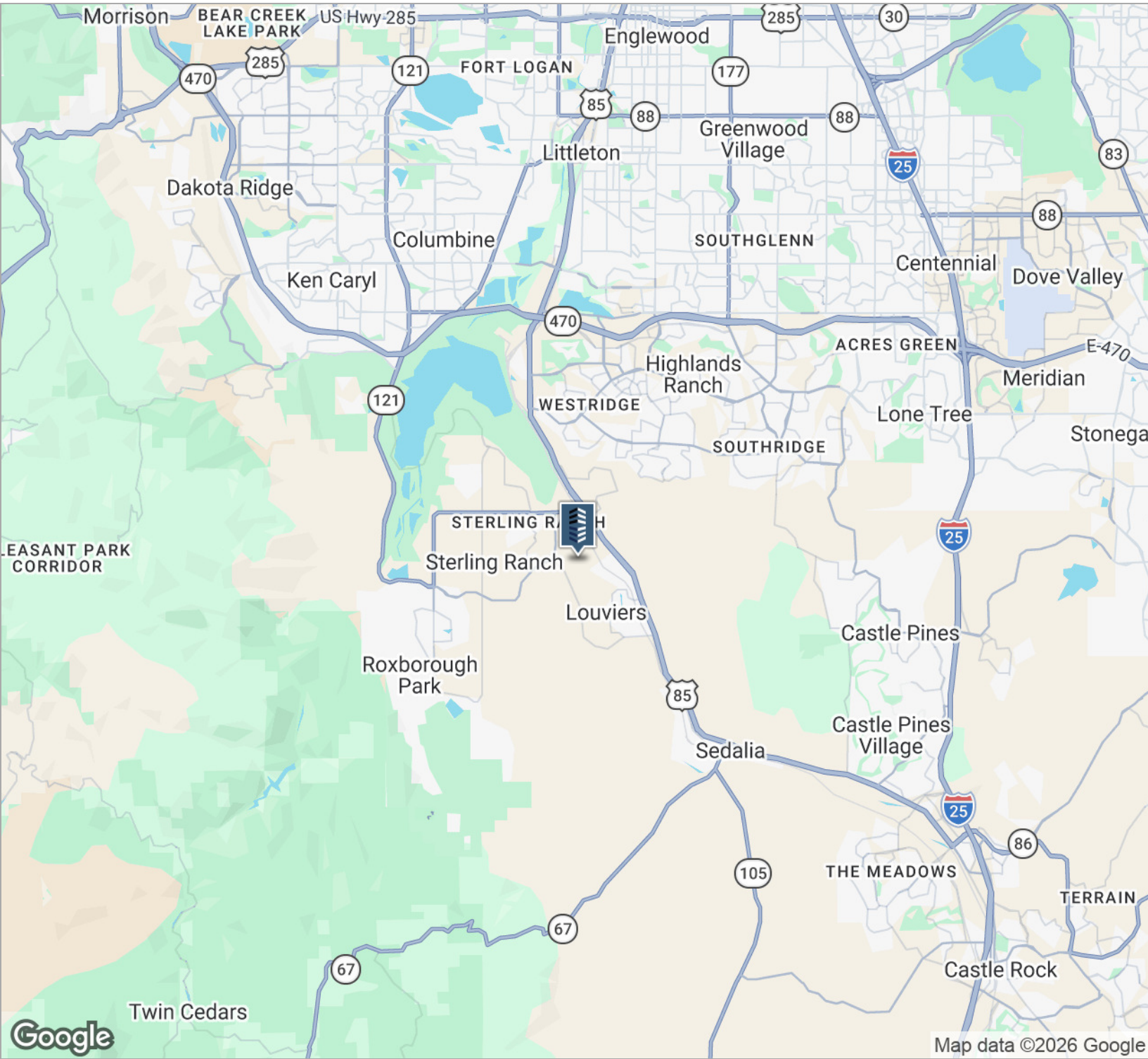
#4 Available:	1,800 SF
#4 Lease Rate:	\$3,500/mth MG
Year Built	1995
Zoning:	G-1 Industrial
Building Size:	14,640 SF
Ceiling Height:	16' clear

PROPERTY HIGHLIGHTS

- 16' ceilings and 58' bay depth
- Located just a few minutes off West Titan Road and S. Santa Fe Drive
- UNIT #4 - approximately 1,800 SF total with a single office, single restroom and one 14'x14'drive in door
- Auto related uses considered.
- Small outdoor storage area included.



OFFICE/WAREHOUSE & YARD FOR LEASE



CONTACT:

BRAD GILPIN
 SENIOR VICE PRESIDENT
 303.512.1196
 bgilpin@uniqueprop.com

The information contained herein was obtained from sources believed reliable; however, Unique Properties makes no guarantees, warranties or representations as to the completeness or accuracy thereof. The presentation on this property is submitted subject to errors, omission, changes of price, or conditions, prior to sale or lease, or withdrawal without notice.