



# FEDERAL RESERVE BANK BUILDING

502 S. SHARP STREET  
BALTIMORE, MD 21201



**HARRINGTON**  
COMMERCIAL REAL ESTATE SERVICES

# 502 S. SHARP STREET

BALTIMORE, MD 21201

EXCLUSIVE OPPORTUNITY TO LEASE  
SPACE IN ONE OF DOWNTOWN'S MOST  
SECURE BUILDINGS

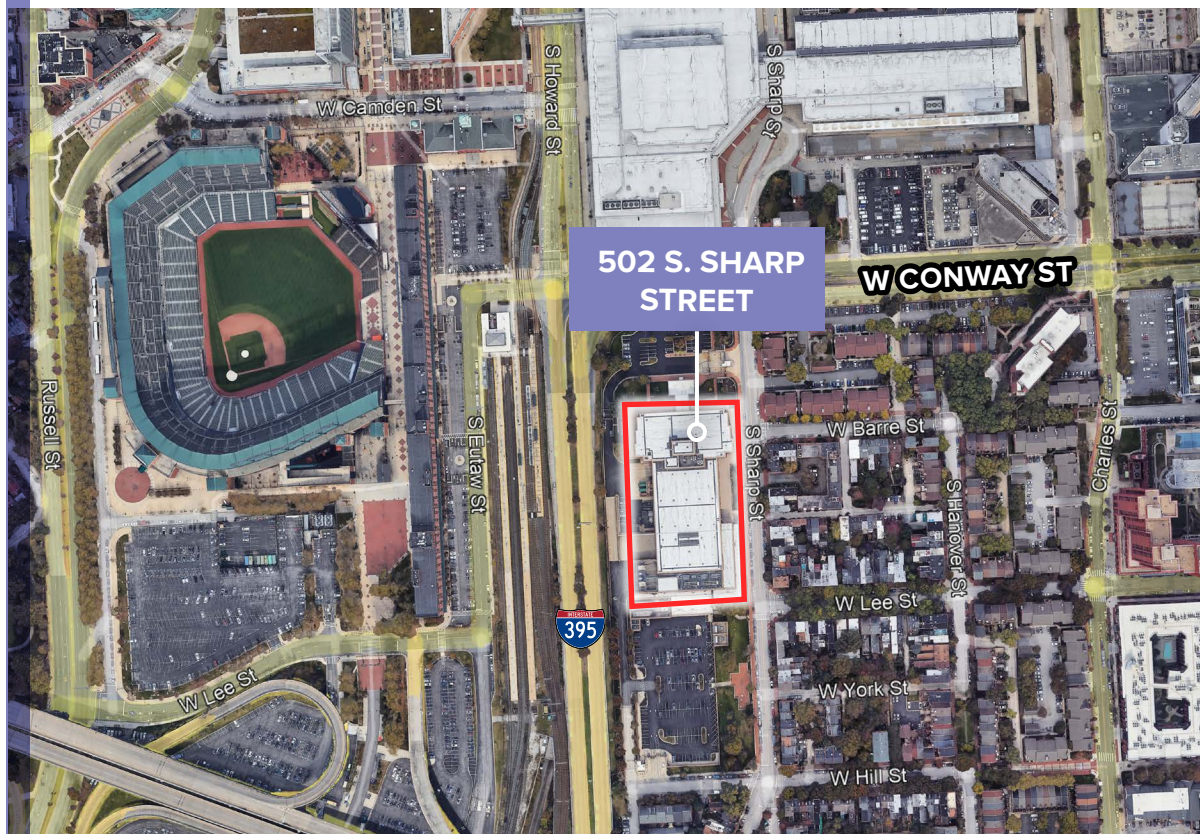
## Space Availability:

### 1ST FLOOR

Suite 101	1,115 SF
Suite 102	973 SF
Suite 103	4,156 SF
Suite 104	2,392 SF

### 2ND FLOOR

Suite 201	5,583 SF
Suite 202	3,317 SF



Located adjacent to Interstate 395,  
with easy access to Interstate 95,  
across from Camden Yards and the  
Convention Center



Free parking in secure parking lot



Located between Downtown and  
Federal Hill

# ENJOY THE AMENITIES OF THE FEDERAL RESERVE BANK AT 502 S. SHARP STREET



## AMENITIES

- » Updated conference facilities with in-house catering
- » Cafeteria with private/executive dining rooms
- » Outside park with picnic area
- » Fitness Center
- » Limited furniture available
- » Free and abundant on-site parking

**Ideal for government, defense, contingency/backup site, telemarketing and service business requiring a secure environment**

---

**State-of-the-art security system**

---

**SCIF & Tier II capable**

---

**Raised flooring for call and data centers**

---

**On-site management and maintenance by the Federal Reserve Bank**

---

**Back-up generator and cooling systems**

# NEARBY AMENITIES



President St

POWER PLANT  
*Level!*

Pratt St

 **The Baltimore**  
Convention Center

 NATIONAL AQUARIUM

Light St

W Conway St



502 S. SHARP STREET

 PIER SIX  
PAVILION

 BALTIMORE'S  
INNER HARBOR

 MARYLAND  
SCIENCE CENTER

Key Hwy

 AMERICAN  
VISIONARY  
ART MUSEUM



Cal Ripken Way

MLK Jr Blvd



 CROSS STREET  
ESTD 1848  
FEDERAL HILL  
→ MARKET ←



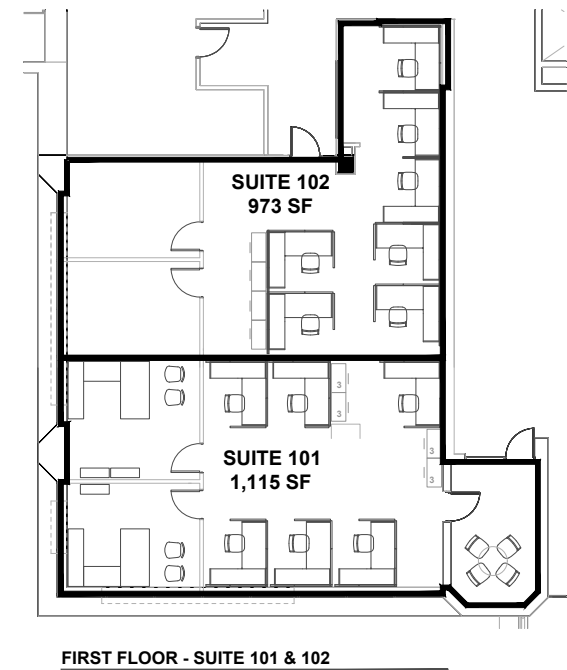
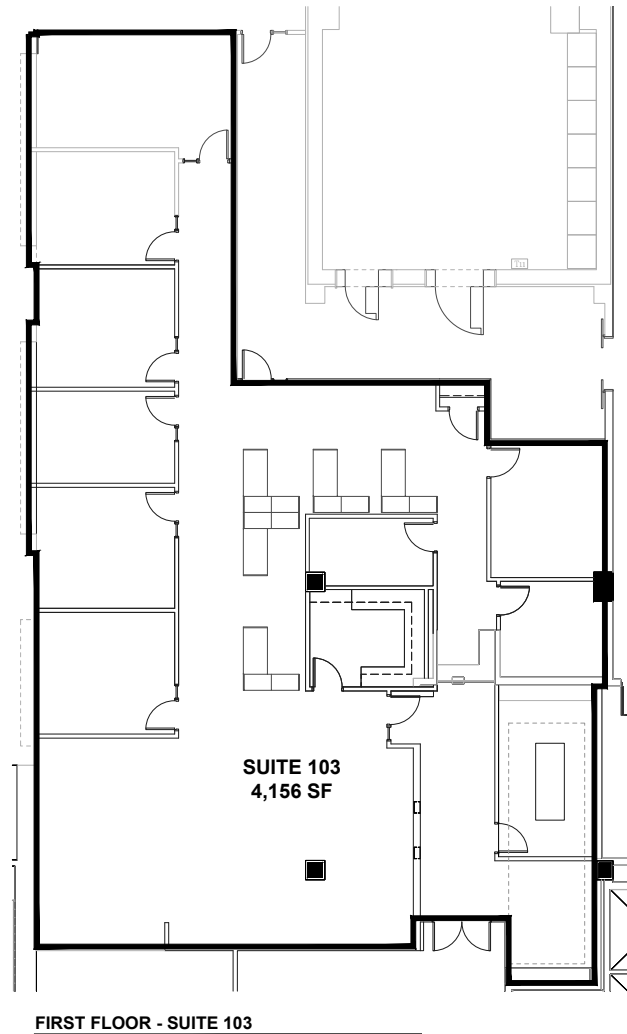
# FEDERAL RESERVE BANK BUILDING

502 S. SHARP STREET  
BALTIMORE, MD 21201

## FIRST FLOOR

**TERRI HARRINGTON**  
Managing Principal

410-302-2443  
terri@harringtoncommercial.com



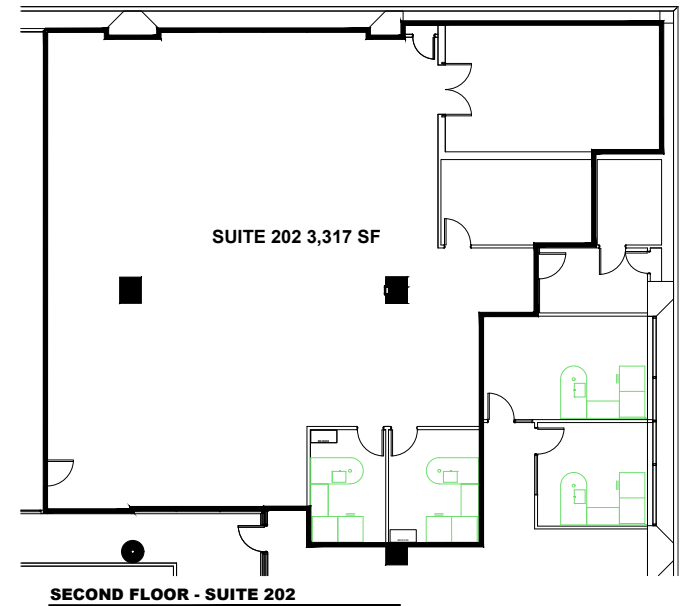
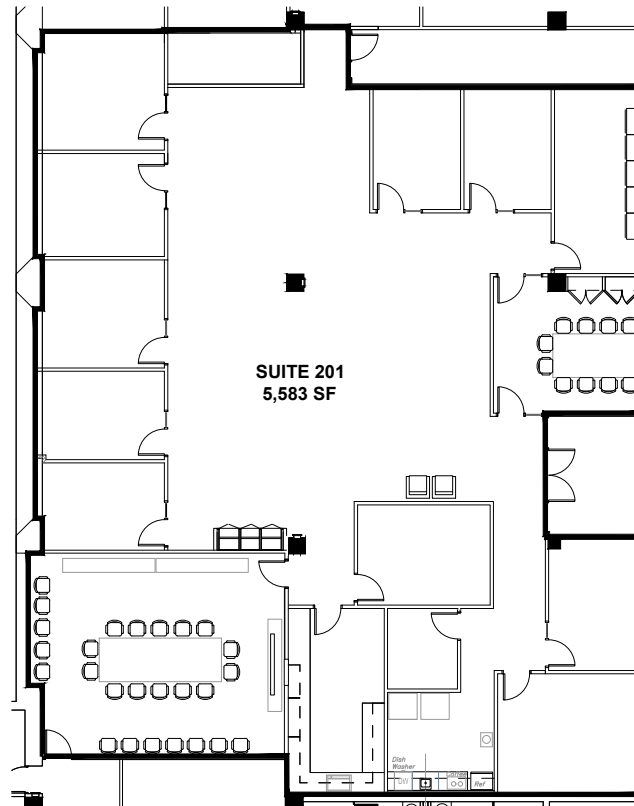
# FEDERAL RESERVE BANK BUILDING

502 S. SHARP STREET  
BALTIMORE, MD 21201

SECOND FLOOR

**TERRI HARRINGTON**  
Managing Principal

410-302-2443  
terri@harringtoncommercial.com



# CONTACT INFORMATION

**TERRI HARRINGTON**  
Managing Principal

410-302-2443  
terri@harringtoncommercial.com

1200 Steuart Street #817  
Baltimore, MD 21230

[www.harringtoncommercial.com](http://www.harringtoncommercial.com)



**HARRINGTON**  
COMMERCIAL REAL ESTATE SERVICES

