

Plug-and-Play Offices

Up to **141,864** sq. ft. | Direct access to **Central Station**





Total Rentable Area

141,864 sq. ft.

Floor Plate

26,265 sq. ft.



Spacious open-plan workspaces
and collaborative areas on every
floor.

Informations

Asking Rent To be discussed

Furniture Included

Expiry November 30, 2027

The floor plates may be subdivided.



Amenities



Restaurant within the building



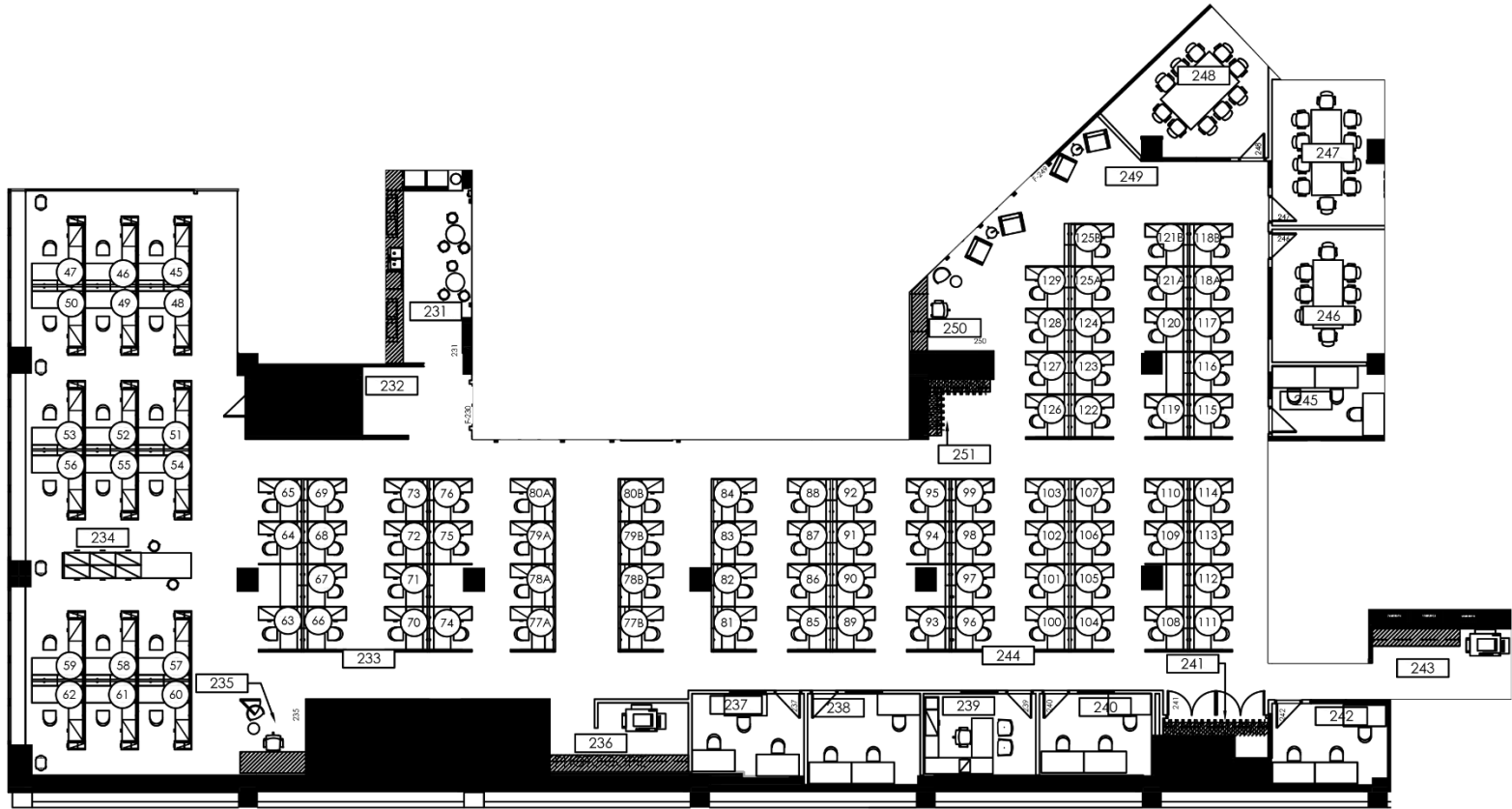
Parking for bicycles



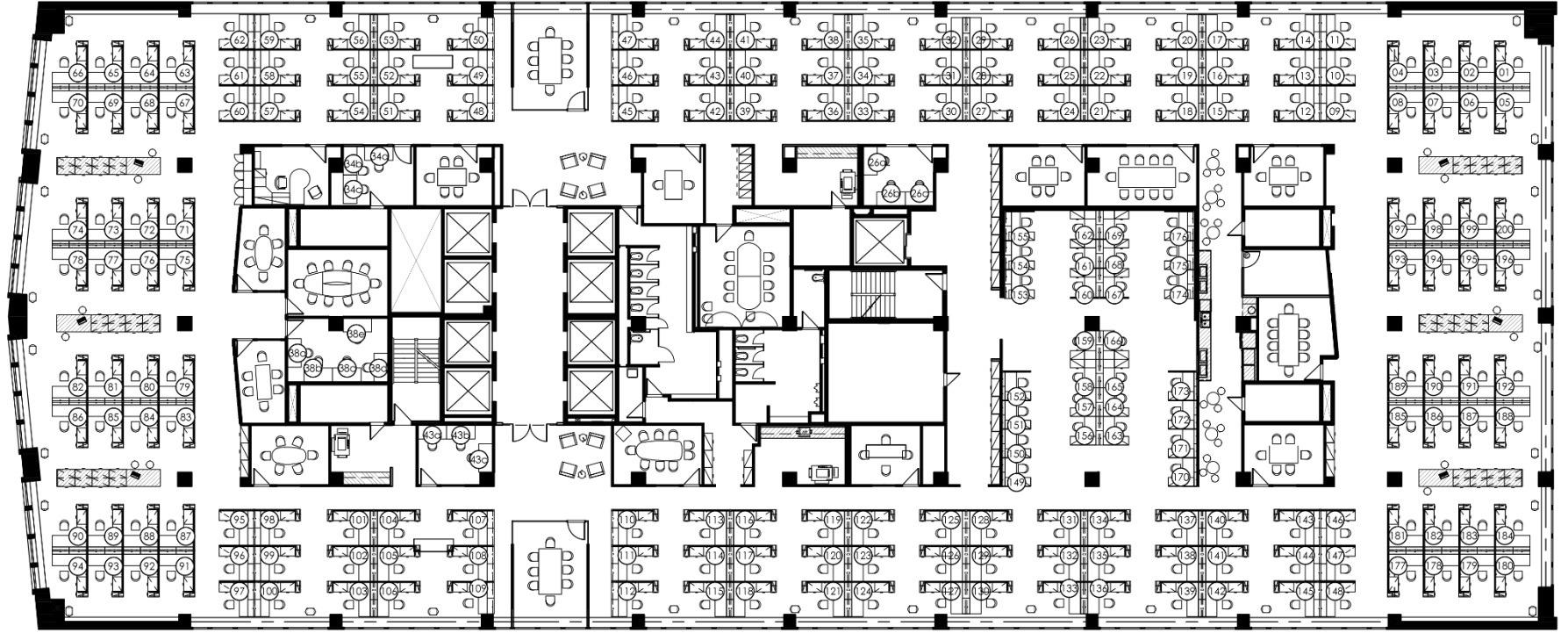
Daycare



2nd floor

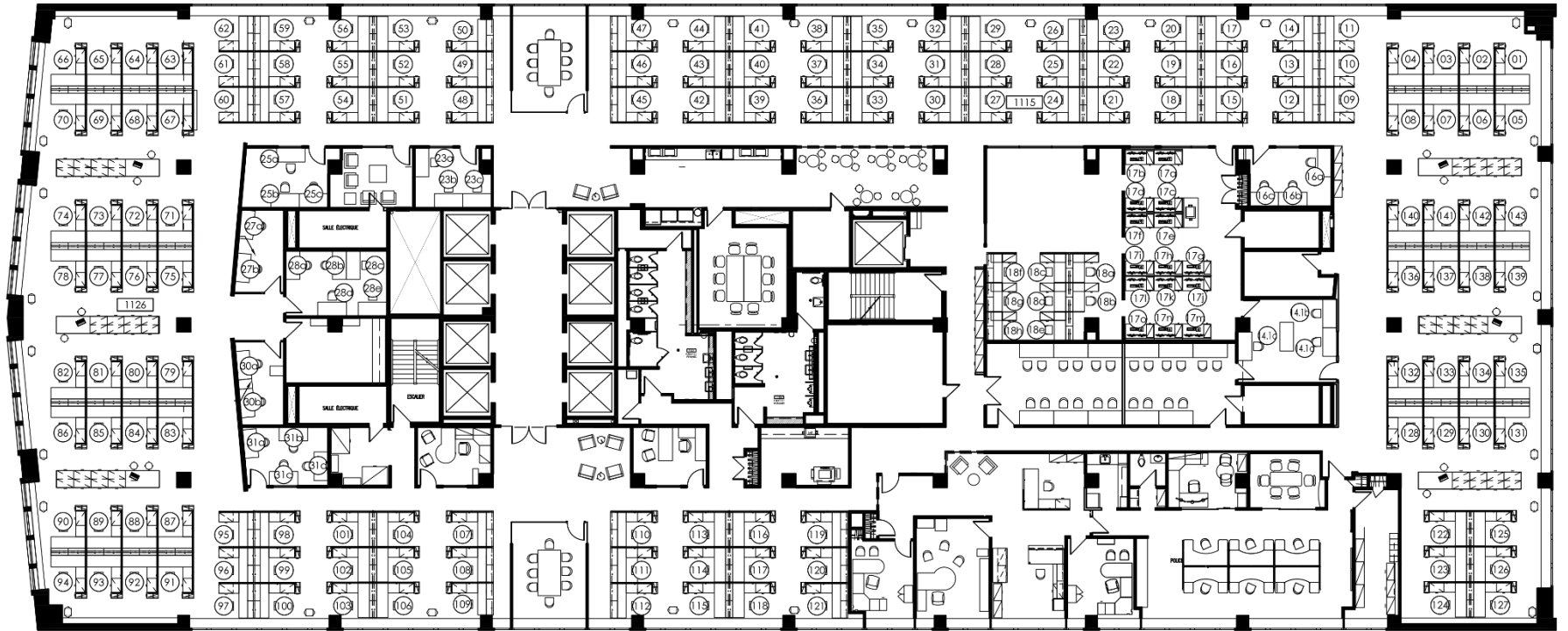


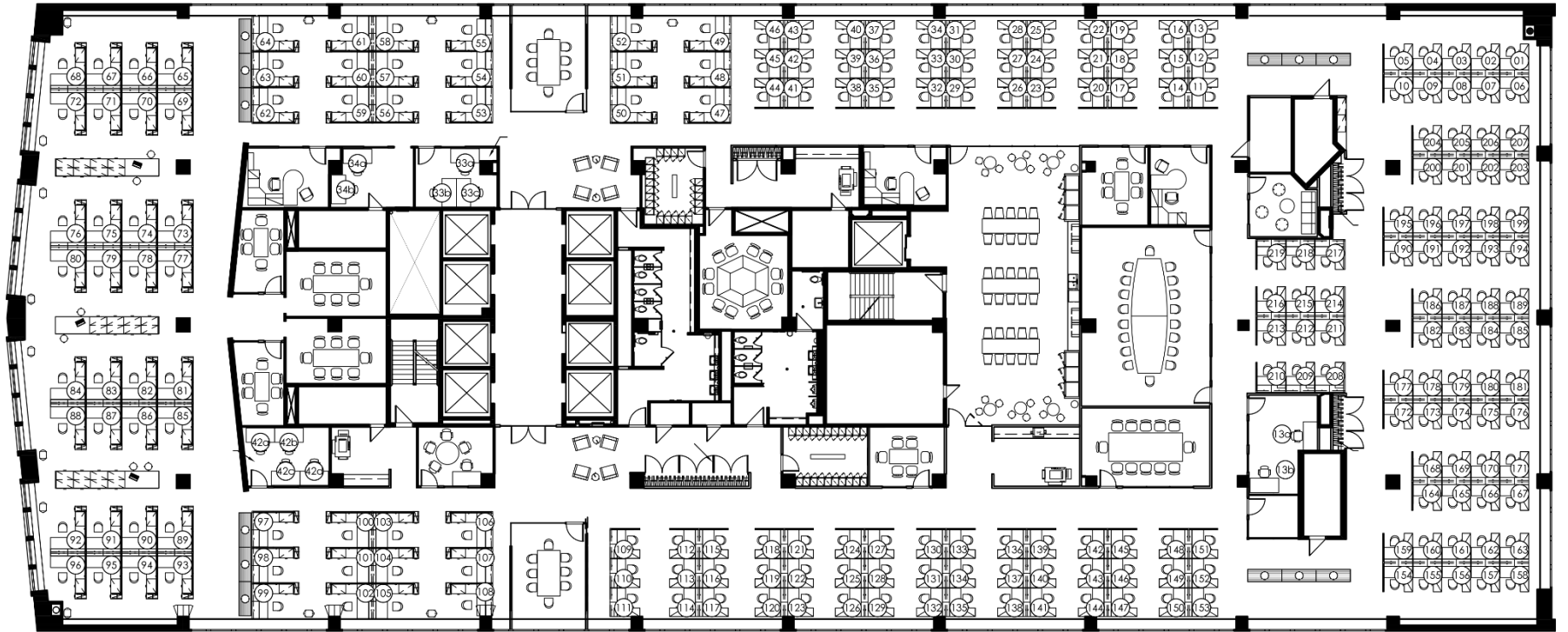
● 10,539 sq. ft.



9th
floor

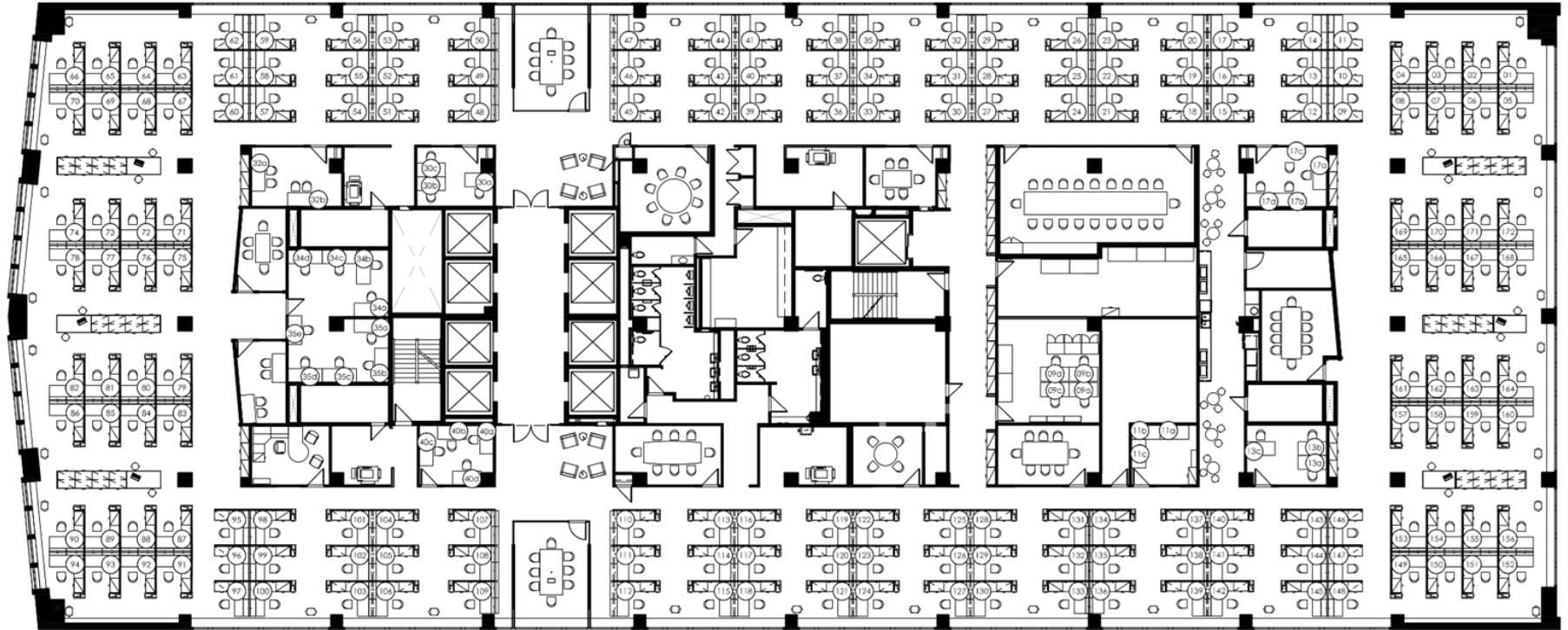
11th floor



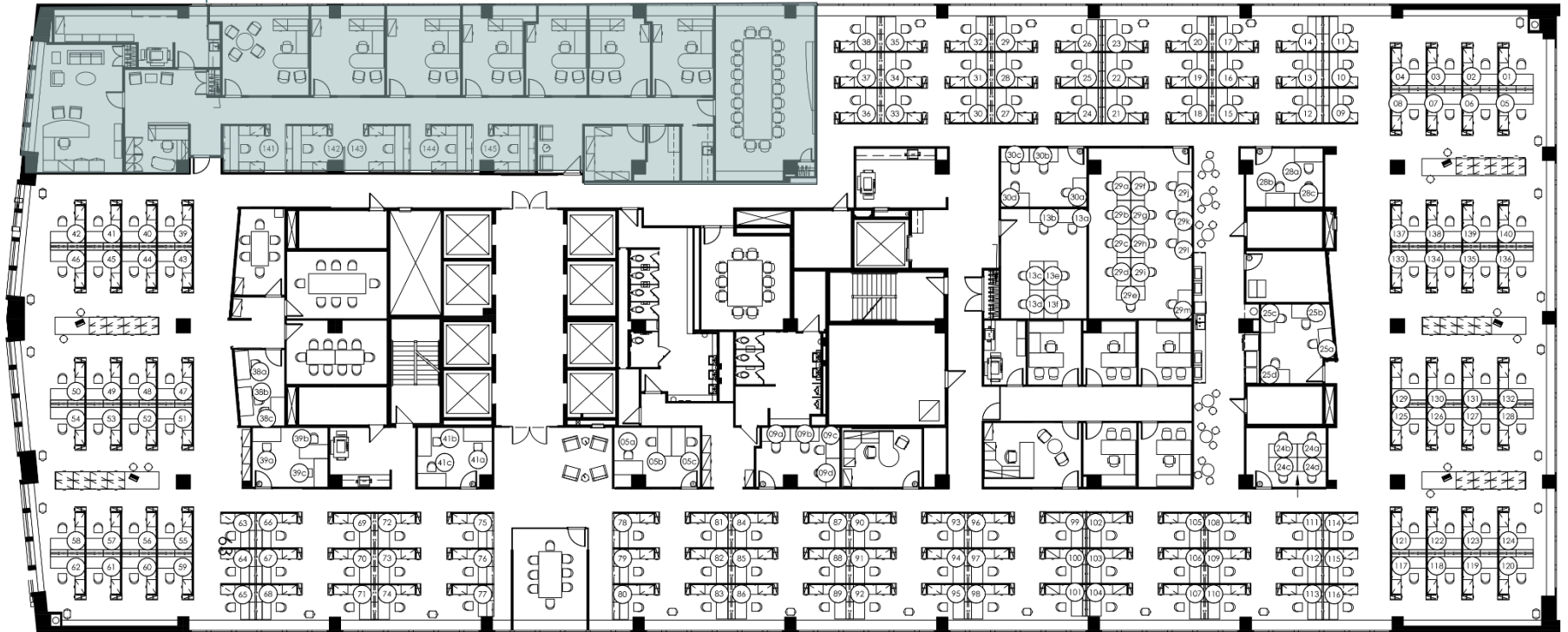


13th floor

14th floor














● Executive Suite



15th
floor

935 De La Gauchetière Street West
Montréal, Québec H3B 2M9

Surrounding Area

-  Bicycle Path
-  Hotels
-  Montreal Underground City
-  Shopping Malls
-  100 Transit Score
-  Restaurants
-  94 Walk Score
-  Train Station
-  72 Bike Score
-  Bus Terminal
-  REM (Réseau express métropolitain)



Contact

Pierre Lacroix
Executive Vice President
Certified Real Estate Broker
+1 514.294.2040
pierre.lacroix@cbre.com

CBRE Limited, Real Estate Agency
1250 René-Lévesque boulevard West, Suite 2800
Montréal (Québec) H3B 4W8 | www.cbre.ca

This disclaimer shall apply to CBRE Limited, Real Estate Brokerage, and to all other divisions of the Corporation; to include all employees and independent contractors ("CBRE"). The information set out herein, including, without limitation, any projections, images, opinions, assumptions and estimates obtained from third parties (the "Information") has not been verified by CBRE, and CBRE does not represent, warrant or guarantee the accuracy, correctness and completeness of the Information. CBRE does not accept or assume any responsibility or liability, direct or consequential, for the Information or the recipient's reliance upon the Information. The recipient of the Information should take such steps as the recipient may deem necessary to verify the Information prior to placing any reliance upon the Information. The Information may change and any property described in the Information may be withdrawn from the market at any time without notice or obligation to the recipient from CBRE. CBRE and the CBRE logo are the service marks of CBRE Limited and/or its affiliated or related companies in other countries. All other marks displayed on this document are the property of their respective owners. All Rights Reserved.

