

2971 BELLEVUE STREET
DETROIT, MICHIGAN

INDUSTRIAL FOR SALE
13,608 Square Feet Available



**SIGNATURE
ASSOCIATES**
KNOW SIGNATURE | KNOW RESULTS

WELL-MAINTAINED BUILDING



PROPERTY FEATURES

- 13,608 square feet available
- 1,000 square feet office
- 18' – 24' clear height
- (3) 10' x 16', 10' x 12' grade level doors
- Near downtown Detroit
- Fenced/walled yard
- M4 zoning
- Sale Price: \$680,000 (\$49.97/sq. ft.)



For more information, please contact:

JOE STACK
(248) 359 0615
jstack@signatureassociates.com

CHRIS MONSOUR
(248) 948 0107
cmonsour@signatureassociates.com

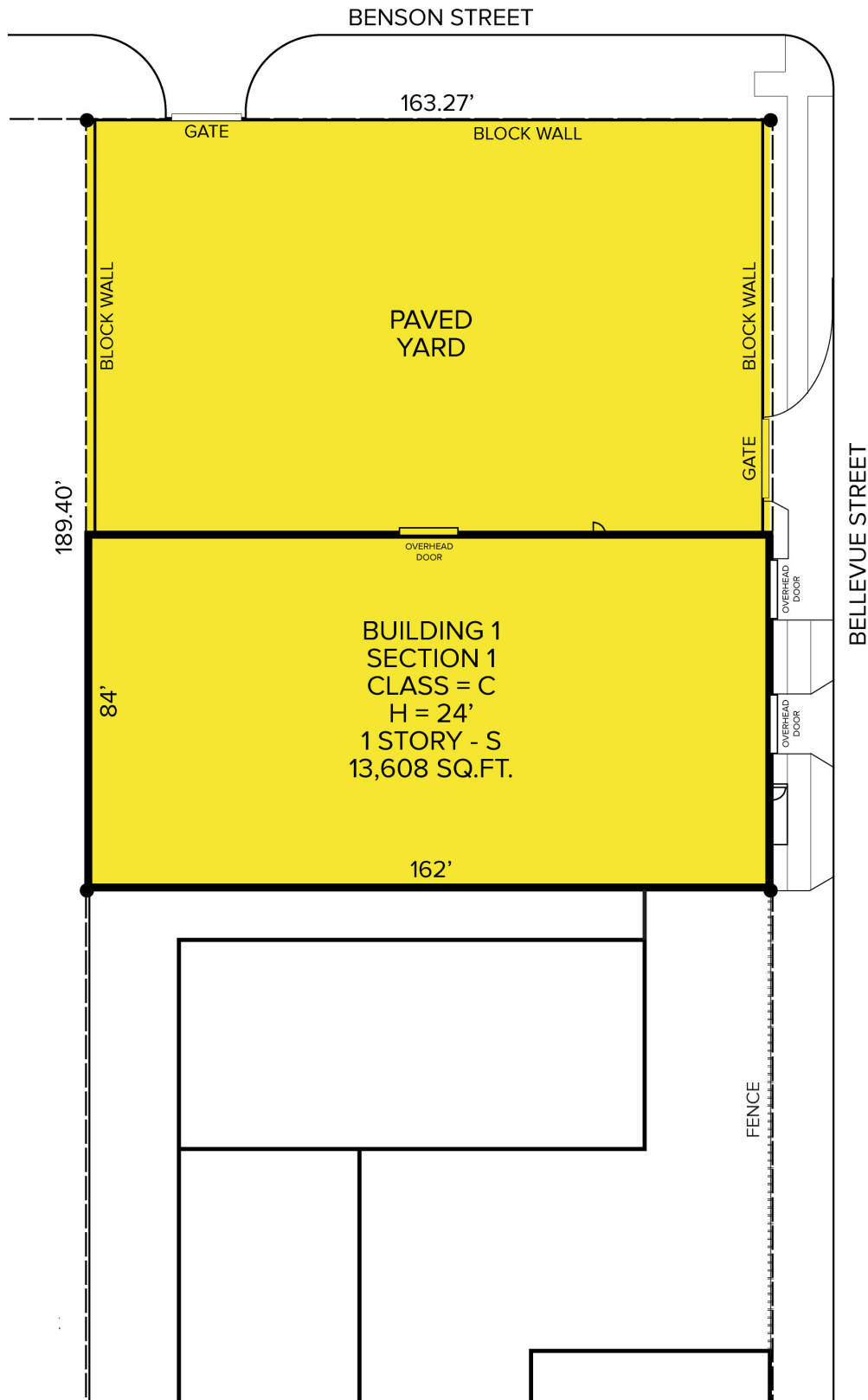
SIGNATURE ASSOCIATES
One Towne Square, Suite 1200
Southfield, MI 48076
www.signatureassociates.com

2971 Bellevue Street – Detroit, Michigan

Industrial For Sale

13,608
Square Feet
AVAILABLE

Site Plan



For more information, please contact:

JOE STACK
(248) 359 0615
jstack@signatureassociates.com

CHRIS MONSOUR
(248) 948 0107
cmonsour@signatureassociates.com

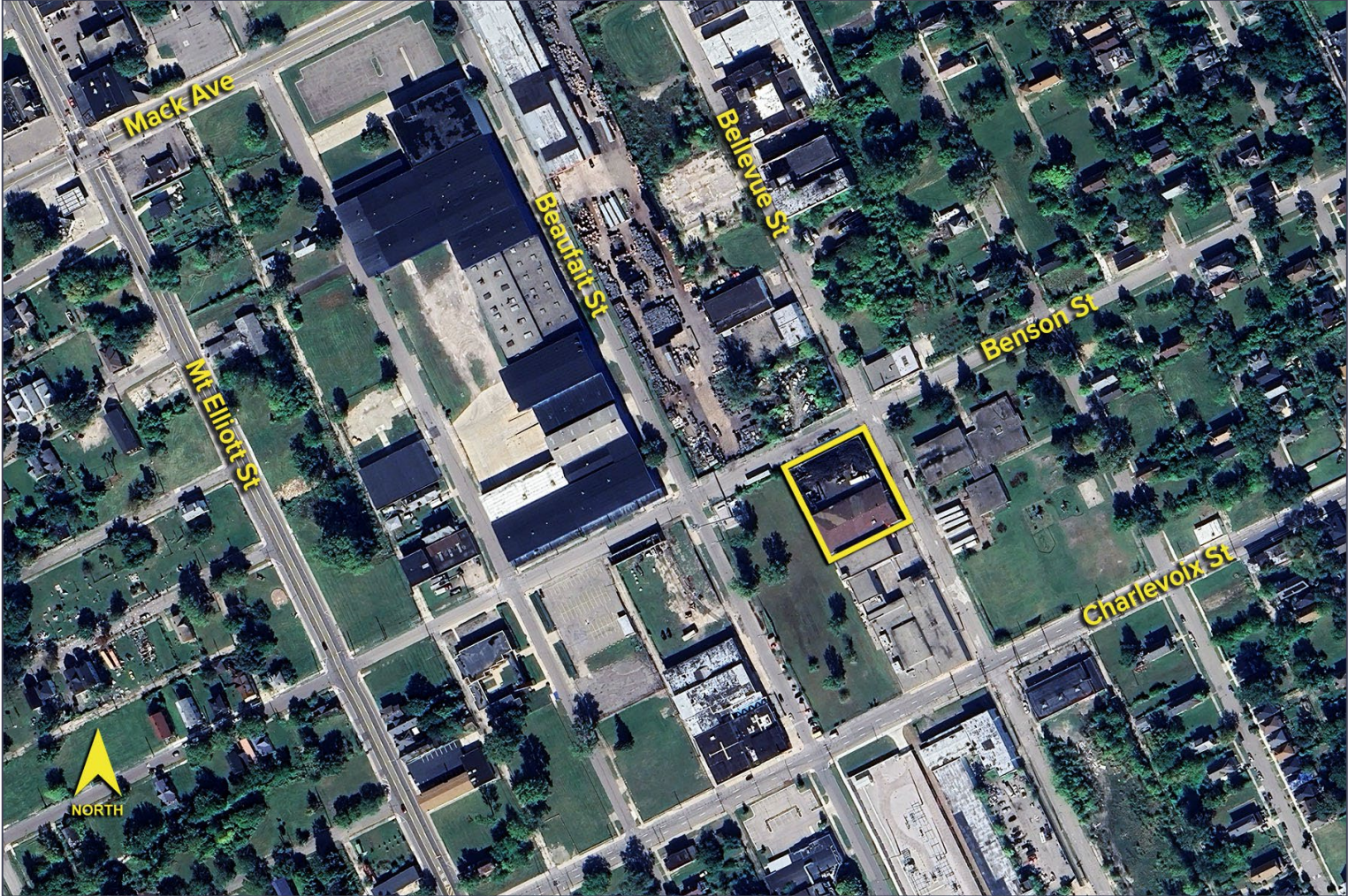
SIGNATURE ASSOCIATES
One Towne Square, Suite 1200
Southfield, MI 48076
www.signatureassociates.com

2971 Bellevue Street – Detroit, Michigan

Industrial For Sale

13,608
Square Feet
AVAILABLE

Aerial



For more information, please contact:

JOE STACK
(248) 359 0615
jstack@signatureassociates.com

CHRIS MONSOUR
(248) 948 0107
cmonsour@signatureassociates.com

SIGNATURE ASSOCIATES
One Towne Square, Suite 1200
Southfield, MI 48076
www.signatureassociates.com

Information is subject to verification and no liability for errors or omissions is assumed. Price is subject to change and listing withdrawal.