

# 6555 ROCK SPRING DRIVE

Bethesda, MD 20817

## Office For Lease

3,473 - 13,971 SF



Leasing Information:  
410.659.1234

**Brent Prossner**  
410.659.1234 x122  
bprossner@lpc.com

**Merrill Turnbull**  
202.513.6713  
mturnbull@lpc.com

# Lincoln

3904 Boston Street  
Suite 404  
Baltimore, MD 21224

[www.lpc.com](http://www.lpc.com)

# 6555 ROCK SPRING DRIVE

Bethesda, MD 20817

Office For Lease

3,473 - 13,971 SF

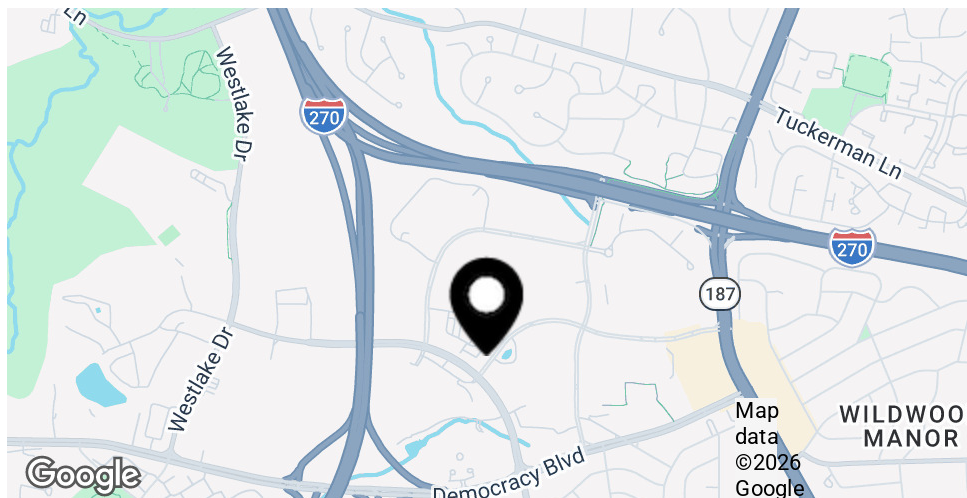


## Property Highlights

- Easy access to Capital Beltway and I-270
- Close proximity to Montgomery mall, Georgetown Square and Wildwood Shoppes
- 3.0 / 1,000 SF parking ratio in covered garage
- Energy Star certified
- On-site management
- Highly efficient floor plan
- Triple power redundancy

## Availabilities

Availabilities	SF	Lease Rate	Date Available
Suite 200	13,971 SF	Negotiable	Immediately
Spec Suite 240	3,473 SF	Negotiable	Immediately
Suite 280B	5,896 SF	Negotiable	Immediately



**Brent Prossner**

410.659.1234 x122  
bprossner@lpc.com

**Merrill Turnbull**

202.513.6713  
mturnbull@lpc.com

**Lincoln**

# 6555 ROCK SPRING DRIVE

Bethesda, MD 20817

Property Photos



**Brent Prossner**  
410.659.1234 x122  
bprossner@lpc.com

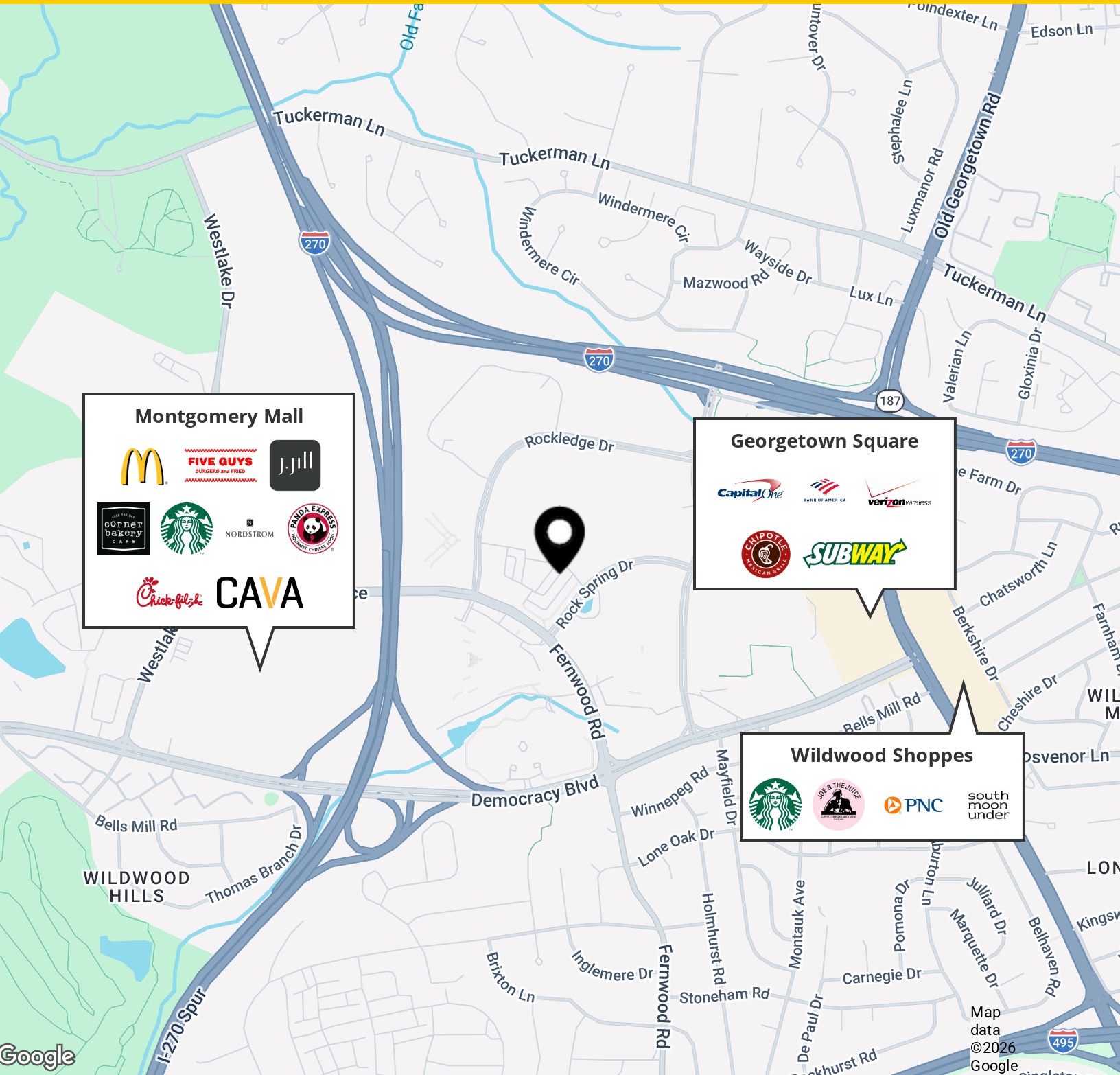
**Merrill Turnbull**  
202.513.6713  
mturnbull@lpc.com

**Lincoln**

# 6555 ROCK SPRING DRIVE

Bethesda, MD 20817

## Nearby Bethesda Amenities



**Montgomery Mall**

- McDonald's
- FIVE GUYS BURGERS and FRIES
- J.Jill
- corner bakery
- Starbucks
- NORDSTROM
- PANDA EXPRESS GOURMET CHINESE FOOD
- Chick-fil-z
- CAVA

**Georgetown Square**

- Capital One
- BANK OF AMERICA
- verizon wireless
- CHIPOTLE MEXICAN GRILL
- SUBWAY

**Wildwood Shoppes**

- Starbucks
- JOE & THE JUICE
- PNC
- south moon under

**Brent Prossner**  
410.659.1234 x122  
bprossner@lpc.com

**Merrill Turnbull**  
202.513.6713  
mturnbull@lpc.com

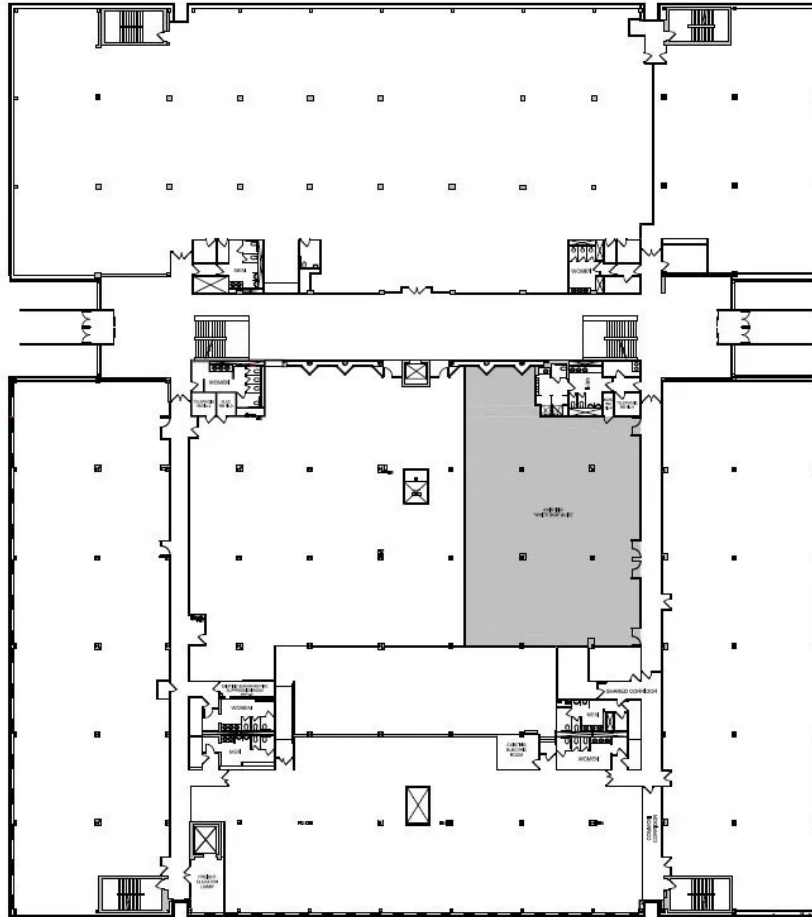
# Lincoln

# 6555 ROCK SPRING DRIVE

Bethesda, MD 20817

Suite 280B

5,896 SF



Suite	Size	Description
Suite 280B	5,896 SF	Available Immediately

**Brent Prossner**    **Merrill Turnbull**

410.659.1234 x122  
bprossner@lpc.com

202.513.6713  
mturnbull@lpc.com

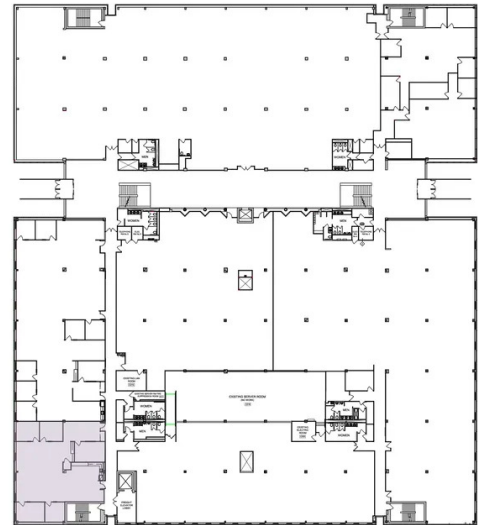
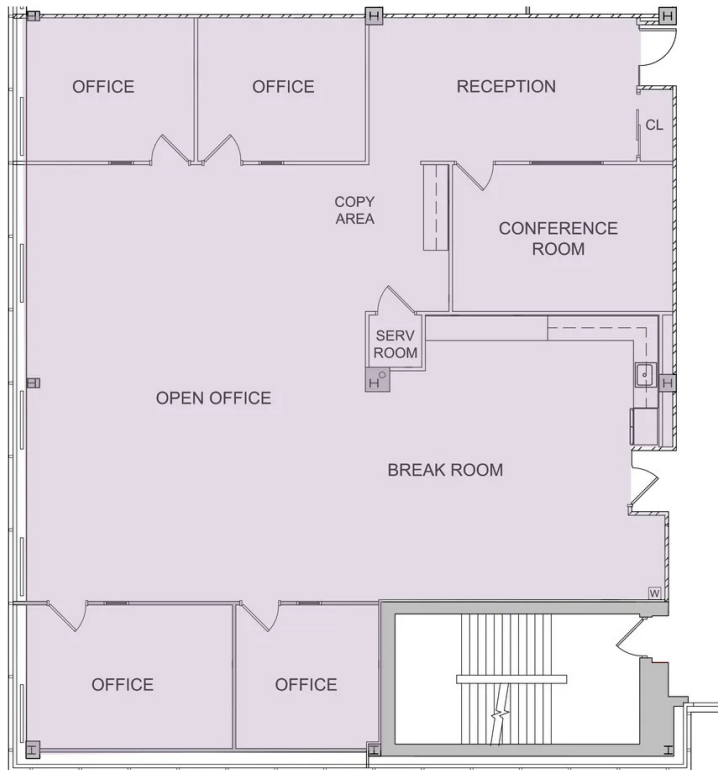
**Lincoln**

# 6555 ROCK SPRING DRIVE

Bethesda, MD 20817

Suite 240

3,473 SF



Suite	Size	Description
■ Spec Suite 240	3,473 SF	Available Immediately

**Brent Prossner**    **Merrill Turnbull**

410.659.1234 x122  
bprossner@lpc.com

202.513.6713  
mturnbull@lpc.com

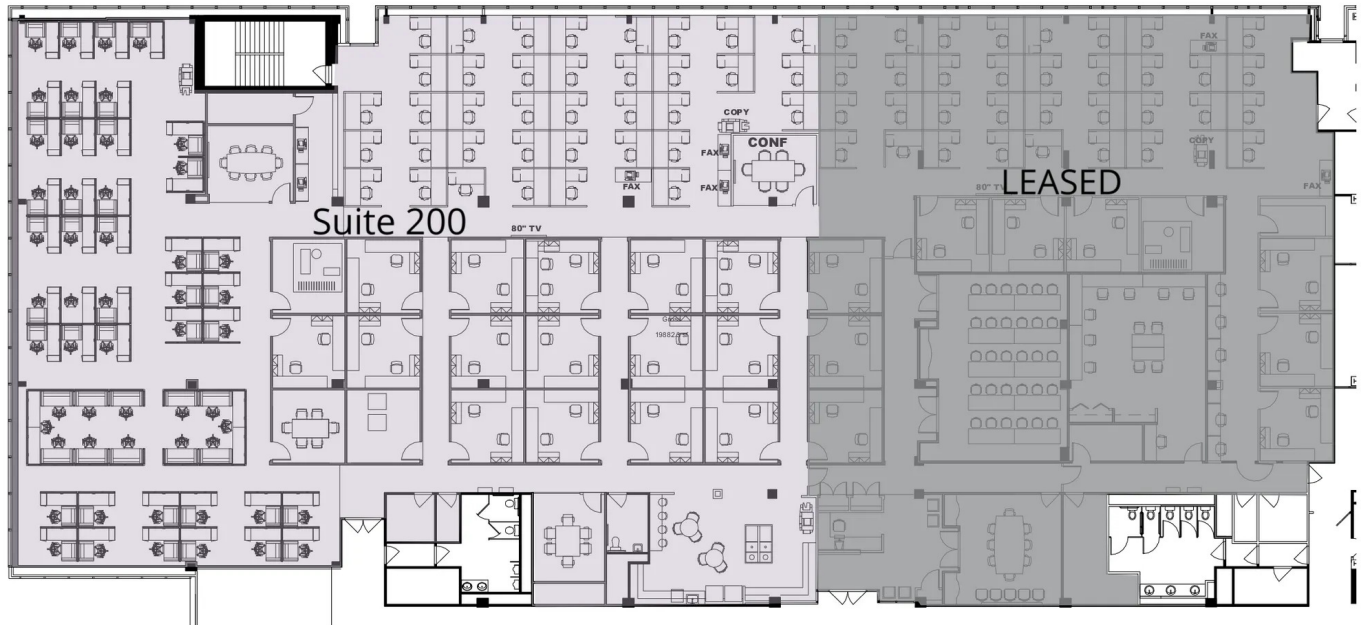
# Lincoln

# 6555 ROCK SPRING DRIVE

Bethesda, MD 20817

Suite 200

13,971 SF



Suite	Size	Description
■ Suite 200	13,971 SF	Available Immediately

**Brent Prossner**

410.659.1234 x122  
bprossner@lpc.com

**Merrill Turnbull**

202.513.6713  
mturnbull@lpc.com

**Lincoln**



# 6555 ROCK SPRING DRIVE

Bethesda, MD 20817

Leasing Information:  
410.659.1234

**Brent Prossner**  
410.659.1234 x122  
bprossner@lpc.com

**Merrill Turnbull**  
202.513.6713  
mturnbull@lpc.com

## Lincoln

3904 Boston Street  
Suite 404  
Baltimore, MD 21224

[www.lpc.com](http://www.lpc.com)