

# Industrial & Commercial Land Parcels for Sale

South Wausau Metro Area

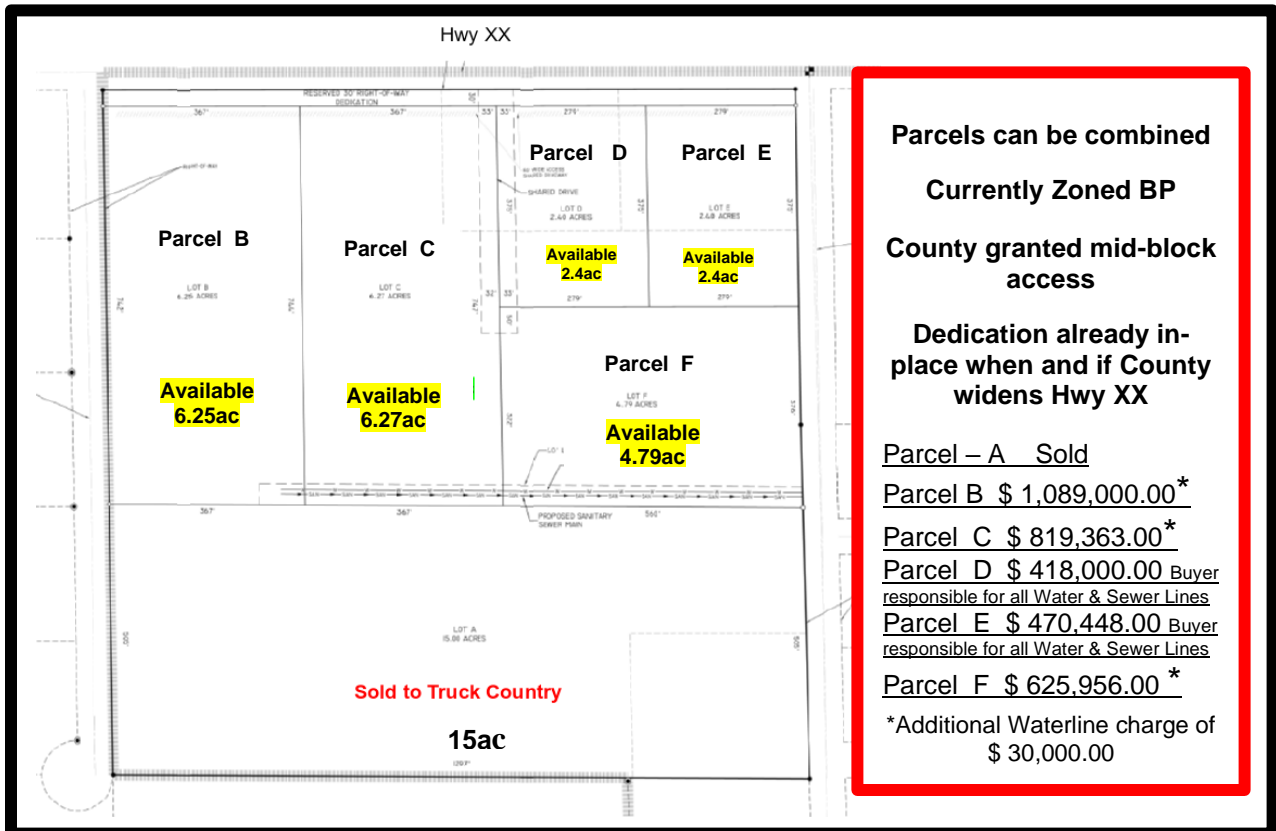
## 1619 County Rd. XX Village of Kronenwetter, WI 54455



### VACANT LAND PARCELS

Just recently made available for sale after FEMA remapping and this commercial property is in the Village of Kronenwetter on the boundary of the Village of Rothschild and

**Features**  
**4 Frontage parcels**  
**along County Hwy XX**  
**and is zoned for**  
**Commercial**  
**Development**



Parcels can be combined  
 Currently Zoned BP  
 County granted mid-block access

Dedication already in-place when and if County widens Hwy XX

Parcel – A Sold  
 Parcel B \$ 1,089,000.00\*  
 Parcel C \$ 819,363.00\*  
 Parcel D \$ 418,000.00 Buyer responsible for all Water & Sewer Lines  
 Parcel E \$ 470,448.00 Buyer responsible for all Water & Sewer Lines  
 Parcel F \$ 625,956.00\*

\*Additional Waterline charge of \$ 30,000.00

The above information has been obtained from various sources that we deem reliable. Although we have no reason to doubt its accuracy or completeness, no representation or warranty is made by Scholfield Group, LLC regarding the information. This submission may be modified or withdrawn at any time by the property owner. Revised 1-19-24

Scholfield Group, LLC • Wausau, WI 54401 • www.scholfieldgroup.com  
 715.574.7007 • bill@scholfieldgroup.com

