

EXPANSIVE PARCEL FOR SALE

L-7 JABBERTOWN ROAD SOUTHPORT, NC



ASKING \$629,900



PREMIER DEVELOPMENT OPPORTUNITY

Unlock the potential of this expansive 7.87-acre parcel, a prime investment opportunity for builders, developers, or investors. Located just outside the city limits of Southport in Brunswick County, North Carolina, **L-7 Jabbertown Road** provides a rare opportunity to capitalize on a rapidly expanding area.

Combine the peace and quiet of suburban living with easy access to Southport's amenities, area beaches, and waterfront charm - **the perfect setting for that custom community, or expanded housing options or development.**

The information contained herein, while not guaranteed, has been obtained from sources deemed authoritative. The property and information contained herein is offered subject to errors, omissions, modifications, availability, price change, prior sale, and withdrawal without prior notice. Please contact the listing agent for information.

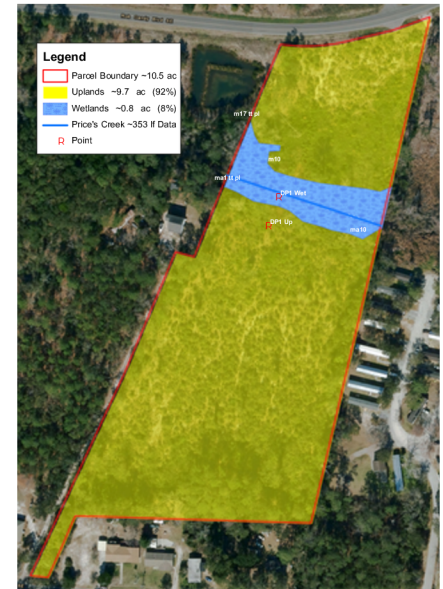
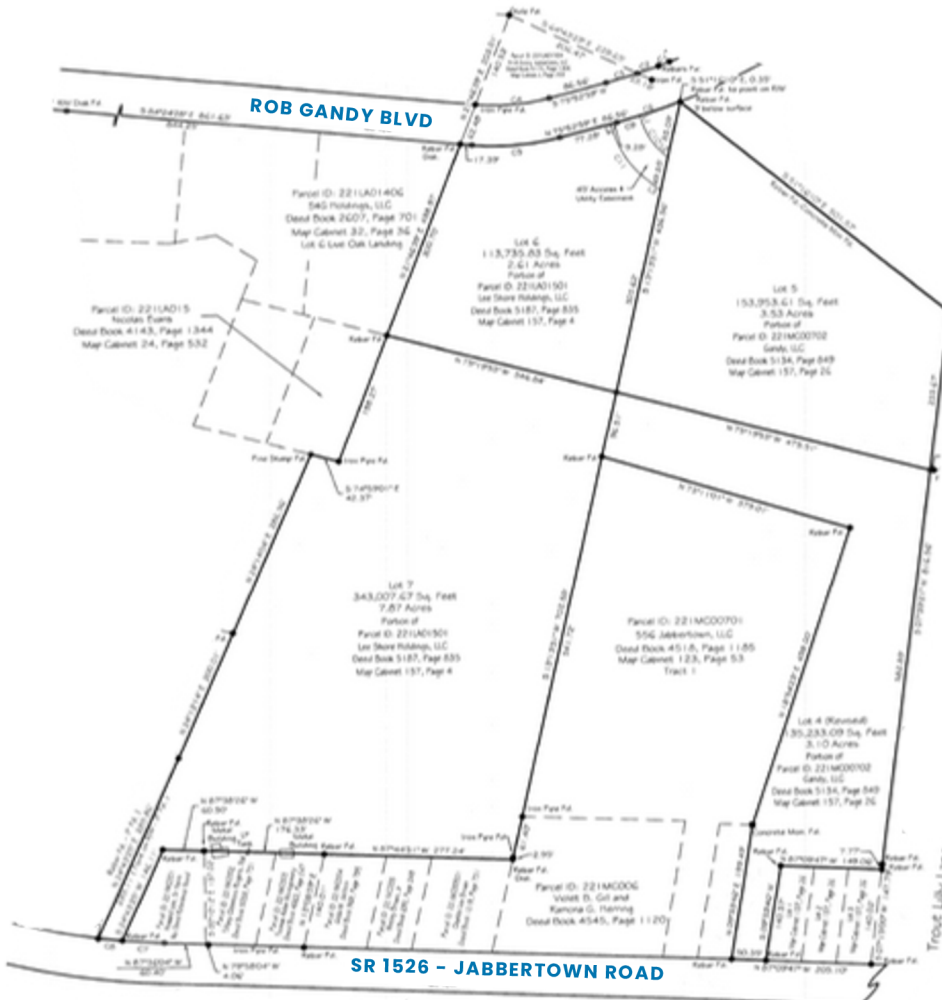
HIGHLIGHTS

- Zoned R-6000
- Preliminary Site & Soil Evaluations
- Completed Preliminary Wetland Delineation
- Easy Access to Southport & Nearby Amenities

L-7 JABBERTOWN ROAD SITE PLAN



PRELIMINARY WETLAND DELINEATION



ACCESS EASEMENT



Listed at \$629,900

For additional information, including the Preliminary Site & Soil Evaluation, contact the Listing Agent using the information below.

PREMIER DEVELOPMENT OPPORTUNITY IN SOUTHPORT

The information contained herein, while not guaranteed, has been obtained from sources deemed authoritative. The property and information contained herein is offered subject to errors, omissions, modifications, availability, price change, prior sale, and withdrawal without prior notice. Please contact the listing agent for information.