



Yard R/o 4 Oxen Industrial Estate, Oxen Road, Luton, LU2 0DX

Secure Storage Yard

Summary

Tenure	To Let
Available Size	990 sq ft / 91.97 sq m
Rent	£5,200 per annum
Business Rates	Upon Enquiry
EPC Rating	Upon enquiry

Key Points

- Surfaced and Fenced
- Gated Entrance
- Suitable for Storage

Yard R/o 4 Oxen Industrial Estate, Oxen Road, Luton, LU2 0DX

Location

Oxen Road is located with the High Town suburb of Luton, having good road links to the town centre, A505, London Luton Airport and neighbouring town Hitchin. The yard is located to the rear of Unit 4 Oxen Industrial Estate.

Description

The yard is surfaced and fenced, with an access gate off Oxen Road. The size is approximately 990 sqft (91.97 m²). It is potentially suitable for small plant storage, commercial vehicle parking, container storage, etc.

Terms

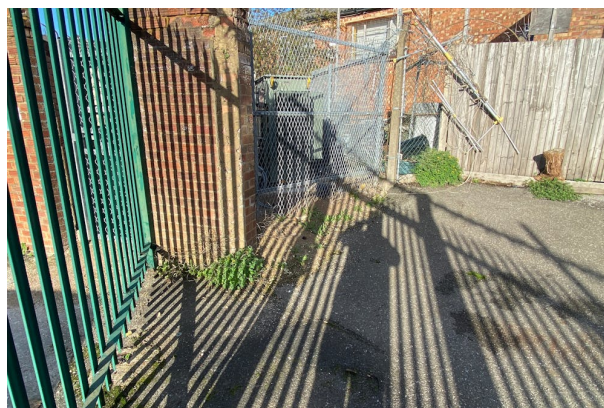
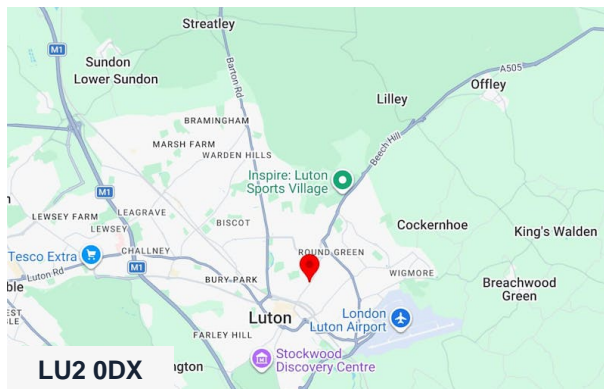
Available upon a new lease for a term to be agreed for £5,200 per annum exclusive (£433.33 pcm).

VAT

VAT is applicable at the appropriate rate.

Professional Fees

Each party is to bear its own professional fees incurred.

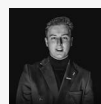


Viewing & Further Information



Stephen Wood

01582 401 221 | 07798 610 003
s.w@srwood.co.uk



Jacob Wood

01582 401 221 | 07401 221 022
j.w@srwood.co.uk