

**Huntersville**

**Concord**

**PROJECT**

**Mecklenburg**

**Charlotte**

**Mint Hill**

**Legend**

- Cabarrus Streets

**MULBERRY HOLDINGS, LLC  
REGIONAL LOCATION**

MEADE  
GUNNELL  
engineering  
NC FIRM NO. C-984  
704-655-7290

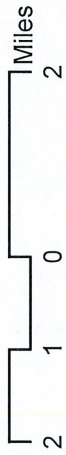
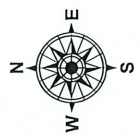
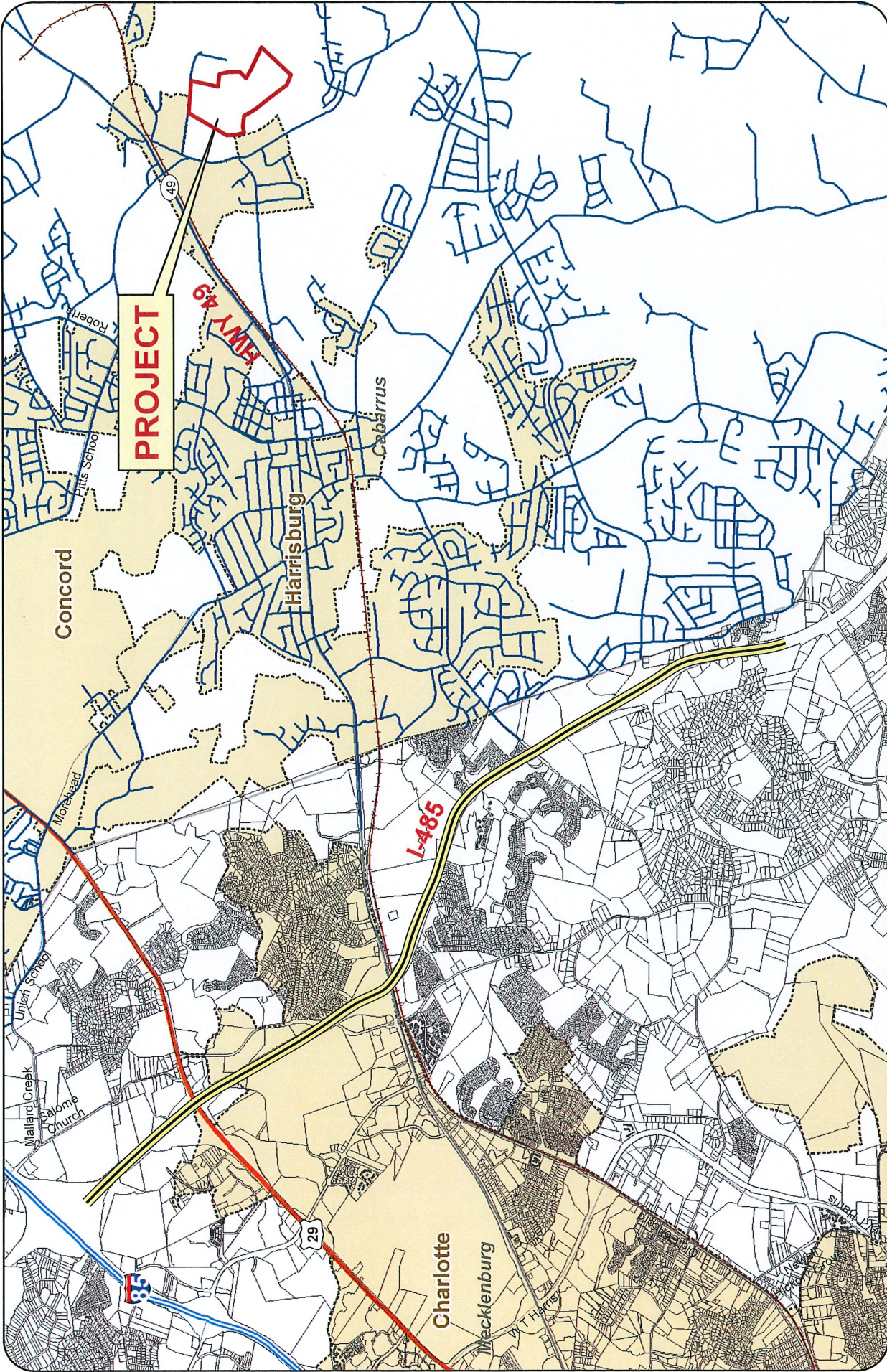


FIG NO 1



GENERAL VICINITY  
 MULBERRY HOLDINGS, LLC  
 CABARRUS CO. NC

**Legend**  
 — Cabarrus Streets

MEADE  
 GUNNELL  
 engineering  
 NC FIRM NO. C-984  
 704-655-7290

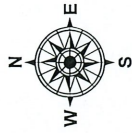
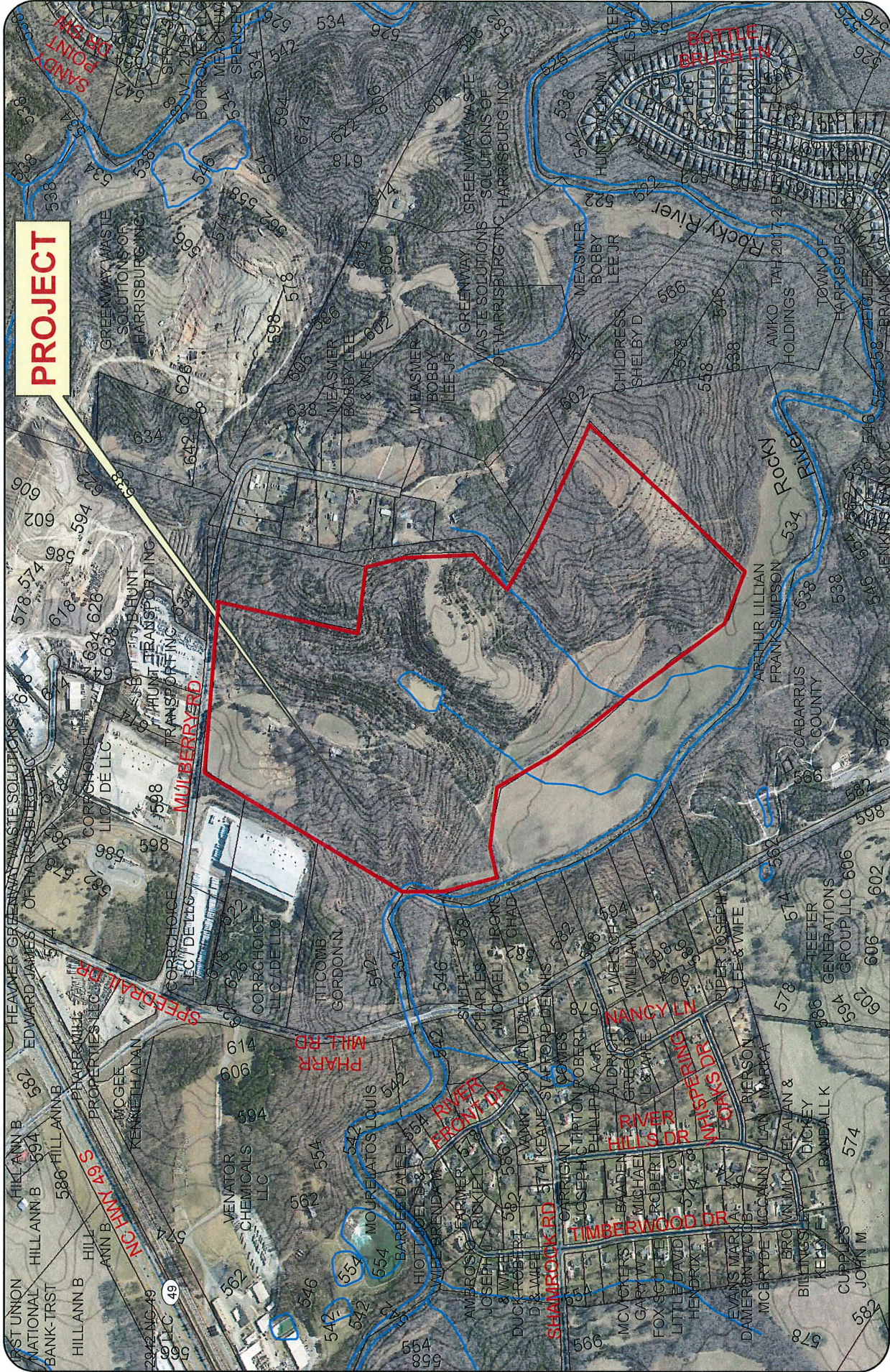






FIG NO 2



**PROJECT**

**MULBERRY HOLDINGS, LLC  
132 AC PROP INDUSTRIAL PARK  
HARRISBURG, NC**

**Legend**

-  Cabarrus TaxParcels
-  Cabarrus Streets
-  NChydro
-  Cabarrus Contours\_2008\_\_2\_foot



**MEADE  
GUNNELL**  
engineering

NC FIRM NO. C-984  
704-655-7290

