

# Small Bluffdale Warehouse

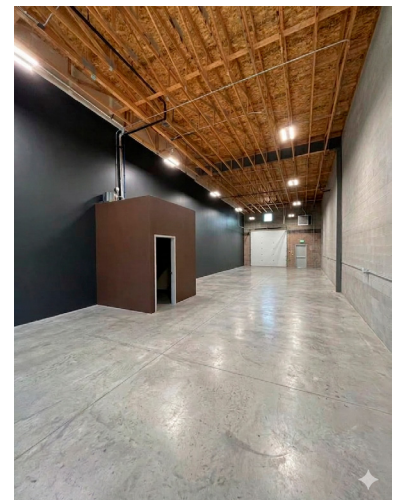
2782 W 14000 S #9  
Bluffdale, UT 84065



## INDUSTRIAL | FOR SUBLEASE

### PROPERTY INFORMATION

- > 1,960 SF
- > \$3,495 /Mo Gross, plus utilities
- > Open warehouse with restroom – no office area
- > 12x12 roll up door
- > Good parking
- > 125 amps 3 phase 208 volt power
- > C-3 Zoning (General Commercial)
- > 19'10" clear height
- > Sublease through 3/31/2027
- > Close to Bangerter Hwy and Redwood Rd



**NAI**Excel

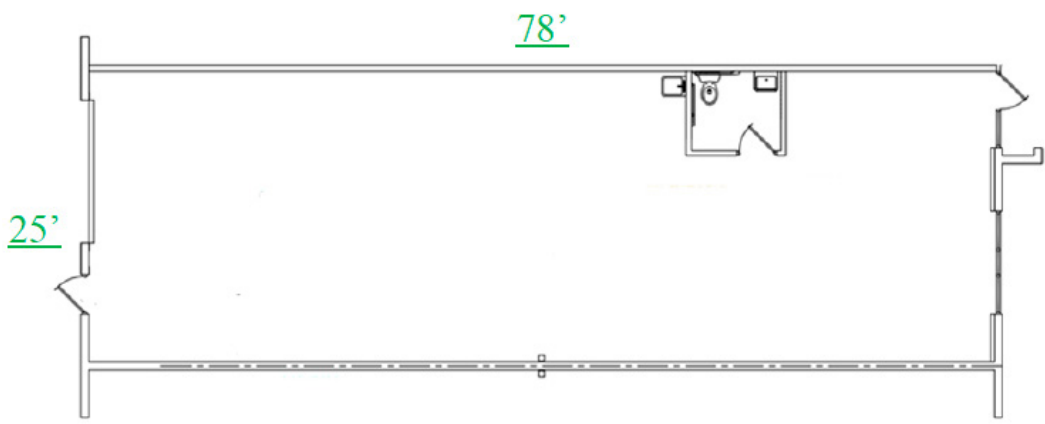
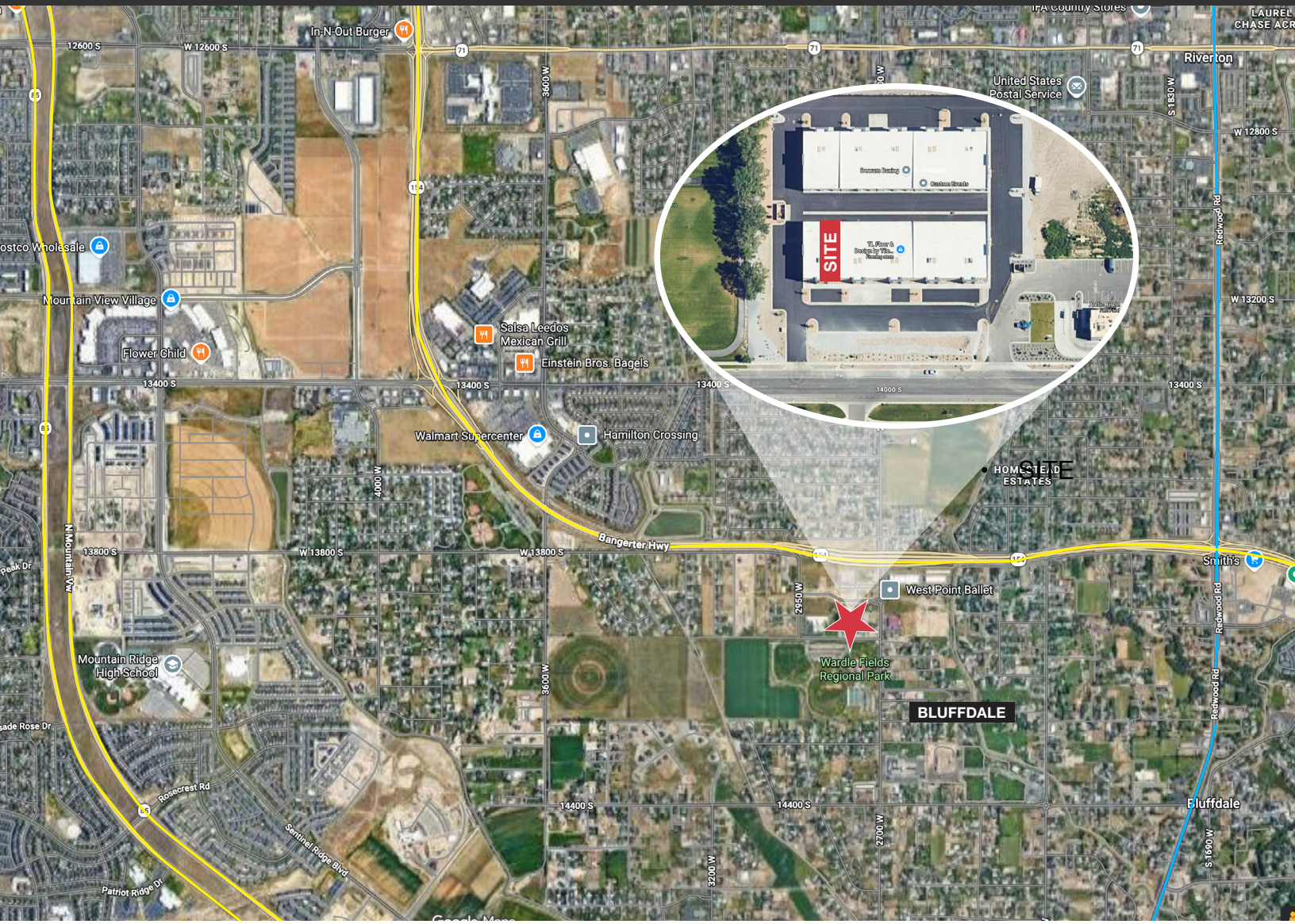
COMMERCIAL REAL ESTATE SERVICES, WORLDWIDE

801 255 3333 | [naiexcel.com](http://naiexcel.com)

John Blatter

c 801 822 6125

[jblatter@naiexcel.com](mailto:jblatter@naiexcel.com)



9350 S 150 E, Ste 410, Sandy, Utah 84070  
801 255 3333 | [naiexcel.com](http://naiexcel.com)

NO WARRANTY OR REPRESENTATION, EXPRESS OR IMPLIED, IS MADE AS TO THE ACCURACY OF THE INFORMATION CONTAINED HEREIN, AND THE SAME IS SUBMITTED SUBJECT TO ERRORS, OMISSIONS, CHANGE OF PRICE, RENTAL OR OTHER CONDITIONS, PRIOR SALE, LEASE OR FINANCING, OR WITHDRAWAL WITHOUT NOTICE, AND OF ANY SPECIAL LISTING CONDITIONS IMPOSED BY OUR PRINCIPALS. NO WARRANTIES OR REPRESENTATIONS ARE MADE AS TO THE CONDITION OF THE PROPERTY OR ANY HAZARDS CONTAINED THEREIN ARE ANY TO BE IMPLIED.