

# FOR LEASE

## BROOKSTONE LANDING PROFESSIONAL OFFICES

31461 RIVERSIDE DRIVE | LAKE ELSINORE, CA

RIVERSIDE DRIVE: ±26,476 CPD



REDUCED  
RENT!!





Great Incentives  
for Qualified  
Tenants!

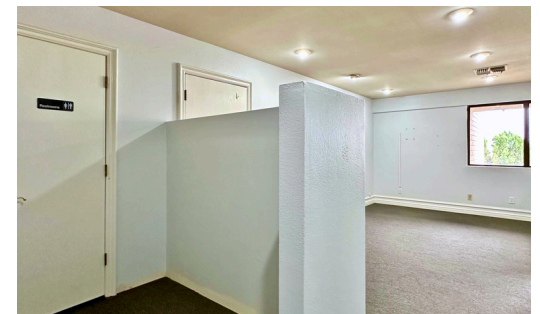


JANET F. KRAMER, JD, CCIM  
951.600.8634 x702  
janetk@svn.com  
CalDRE #01351570

FRANCISCO J. SANCHEZ  
951.600.8634 x708  
francisco.sanchez@svn.com  
CalDRE #02180617

DAMON PLATT  
951.600.8634 x703  
damon.platt@svn.com  
CalDre #02249650

-  AVAILABLE NOW: ±1,100 SF 2nd Floor Office Space
-  Vanilla Shell General Office with Two Private Restrooms and a Conference Room
-  Join the ±4,400 SF Office Building Commonly Known as Brookstone Landing Professional Offices
-  Abundant Parking



JANET F. KRAMER, JD, CCIM  
951.600.8634 x702  
janetk@svn.com  
CaIDRE #01351570

FRANCISCO J. SANCHEZ  
951.600.8634 x708  
francisco.sanchez@svn.com  
CaIDRE #02180617

DAMON PLATT  
951.600.8634 x703  
damon.platt@svn.com  
CaIDRE #02249650



# VACANCY SUMMARY

BROOKSTONE LANDING | 31461 RIVERSIDE DRIVE | LAKE ELSINORE, CA

SUITE	FLOOR	AVAILABILITY	SF	LEASE TYPE	PRICE/SF	PRICE/MONTH
D	2	VACANT	±1,100	MG	\$1.45	\$1,595.00



JANET F. KRAMER, JD, CCIM  
951.600.8634 x702  
janetk@svn.com  
CalDRE #01351570

FRANCISCO J. SANCHEZ  
951.600.8634 x708  
francisco.sanchez@svn.com  
CalDRE #02180617

DAMON PLATT  
951.600.8634 x703  
damon.platt@svn.com  
CalDRE #02249650





JANET F. KRAMER, JD, CCIM  
 951.600.8634 x702  
 janetk@svn.com  
 CalDRE #01351570

FRANCISCO J. SANCHEZ  
 951.600.8634 x708  
 francisco.sanchez@svn.com  
 CalDRE #02180617

DAMON PLATT  
 951.600.8634 x703  
 damon.platt@svn.com  
 CalDRE #02249650



# DEMOGRAPHICS

BROOKSTONE LANDING | 31461 RIVERSIDE DRIVE | LAKE ELSINORE, CA



5-Mile Radius



- State California
- County Riverside
- Mayor Robert Magee
- Website lake-elsinore.org

## POPULATION

Source: ESRI



77,074  
POPULATION



35.4  
MEDIAN AGE



23,152  
HOUSEHOLDS

## EMPLOYMENT



58%  
WHITE COLLAR



26%  
BLUE COLLAR



20%  
SERVICES



6.2%  
UNEMPLOYMENT RATE

## EDUCATION



30%  
HIGH SCHOOL  
GRADUATE



31%  
SOME COLLEGE



22%  
BACHELORS/GRAD/  
PROF DEGREE

## INCOME



\$88,920  
MEDIAN HOUSEHOLD  
INCOME



\$33,616  
PER CAPITA  
INCOME



\$261,733  
MEDIAN NET  
WORTH

JANET F. KRAMER, JD, CCIM  
951.600.8634 x702  
janetk@svn.com  
CaIDRE #01351570

FRANCISCO J. SANCHEZ  
951.600.8634 x708  
francisco.sanchez@svn.com  
CaIDRE #02180617

DAMON PLATT  
951.600.8634 x703  
damon.platt@svn.com  
CaIDRE #02249650

