



RETAIL/INDUSTRIAL FLEX | Springfield, VA

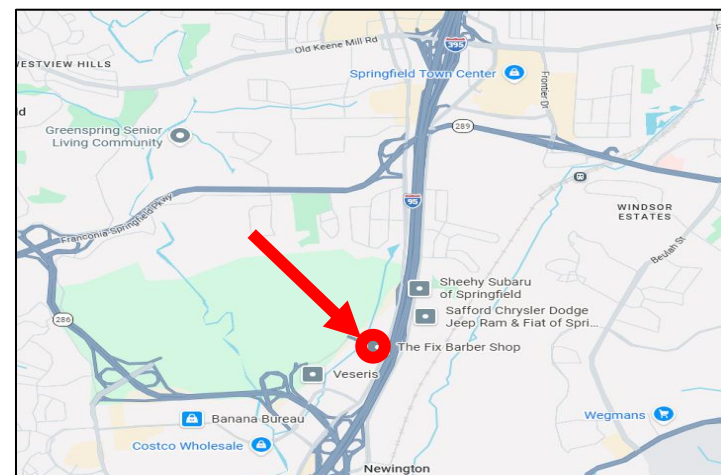
7706 Backlick Road  
Springfield, VA  
~1,600SF for Lease

Prime Retail/Industrial for Lease!

Great features at  
Newington Center!

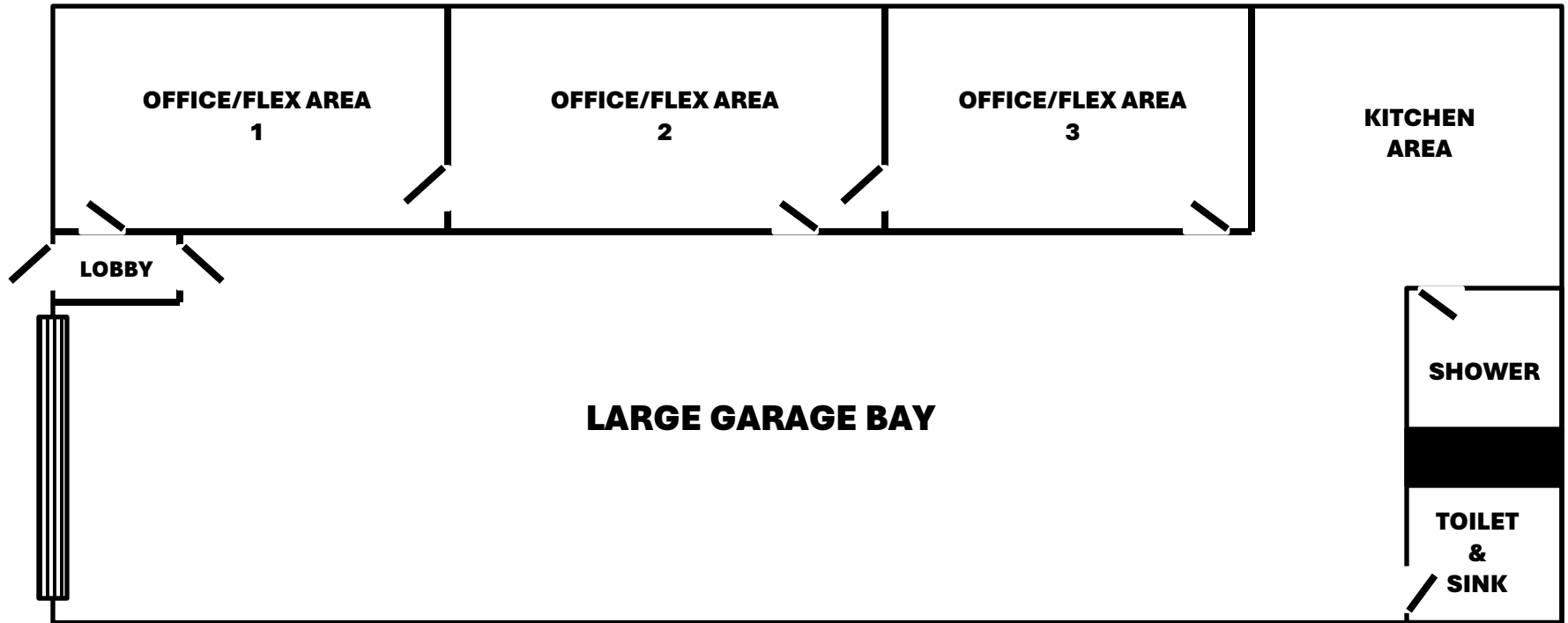


Enjoy ~1,600 SF of Retail/Industrial Flex space at Newington Center! Equipped with a **roll-up garage door**, **pre-built office/flex areas**, and **plenty of retail style parking**. Great for contractors, showrooms, trades, or any business needing both a professional office and warehouse/storage access. Optional **monument signage** and **overnight parking** available.



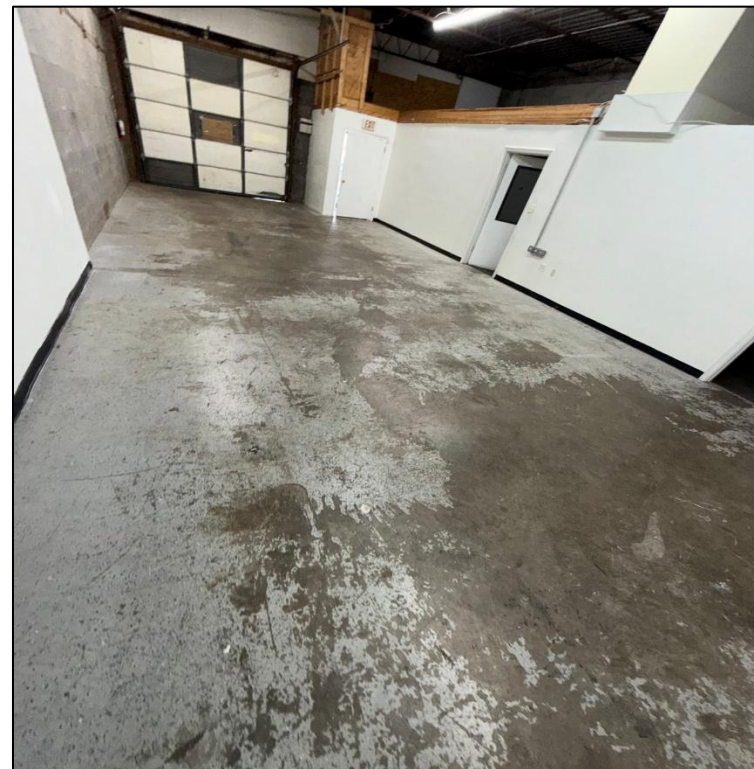
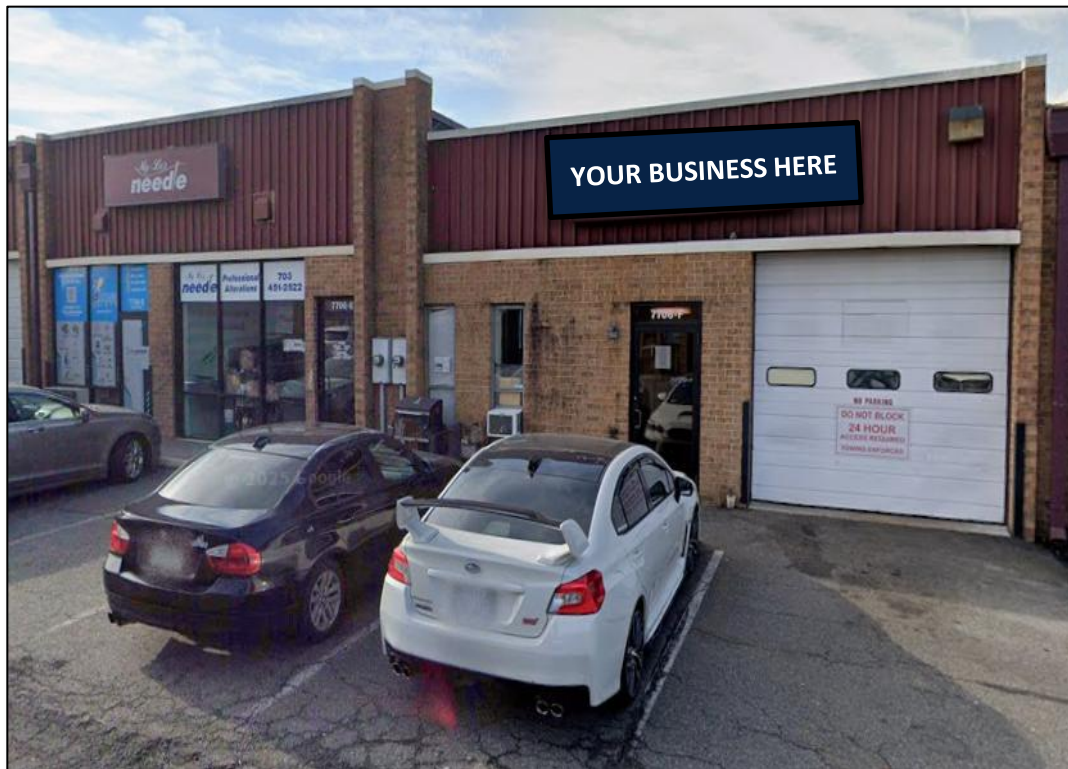
Contact RJM Management: (703) 992-7300

# Flexible Buildout!



~1,600 Square Feet!

Roll up garage door with lots of customer parking!



Great Tenant Mix – Restaurants, Retail,  
Contractors, Personal Service!

7706 Backlick Road | Retail/Industrial Flex | Roll Up Garage Door

# Easy loading via garage door!



## Perfect for a variety of uses!