

11498 LUNA RD

CROWN PLAZA I
Crown Plaza I
11498 Luna Rd
Farmers Branch, TX 75234



Presented by:

Daniel Shin

President & Principal Broker
Daniel.shin@unitedshinryu.com
P 214-470-9724

United Shinryu Brokerage LLC
2828 E Trinity Mills Rd.
Suite# 340, Carrollton, TX 75006
www.unitedshinryu.com

AVAILABLE FOR LEASE

Executive Summary

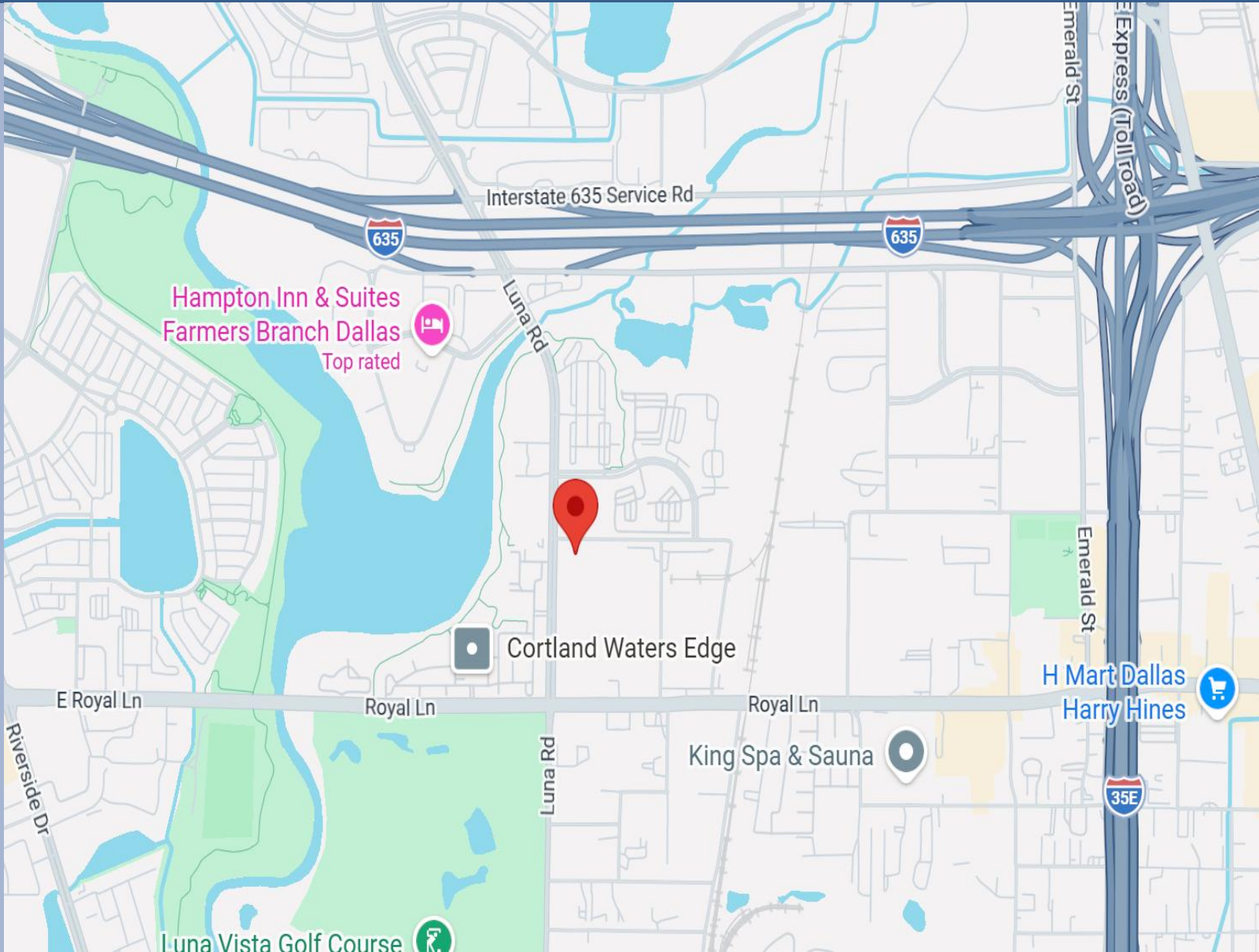
Crown Plaza is a well-maintained, professionally managed two-story office building located in the highly accessible Las Colinas / Farmers Branch submarket within the DFW metroplex. The property offers a clean, professional business environment with flexible floor plans suitable for a variety of office users.

Significant capital improvements have been recently completed, including upgrades to HVAC systems, elevators, common areas, and building interiors, positioning the property as a competitive and attractive office solution in the market.

With excellent access to both LBJ Freeway (I-635) and I-35 via Luna Road and Royal Lane, and its proximity to both DFW International Airport and Dallas Love Field, Crown Plaza provides exceptional connectivity for tenants and visitors.

Property Summary

- **Property Type:** Retail Office Center
- **Building Size:** 27,980 SF
- **Land Size:** 4.99 Acres
- **Year Built:** 1982
- **Parking:** 100 spaces (3.57/1,000 SF)
- **Frontage:** Approx. 55' on Harry Hines Blvd
- **Zoning:** Z236



11498 Luna Rd

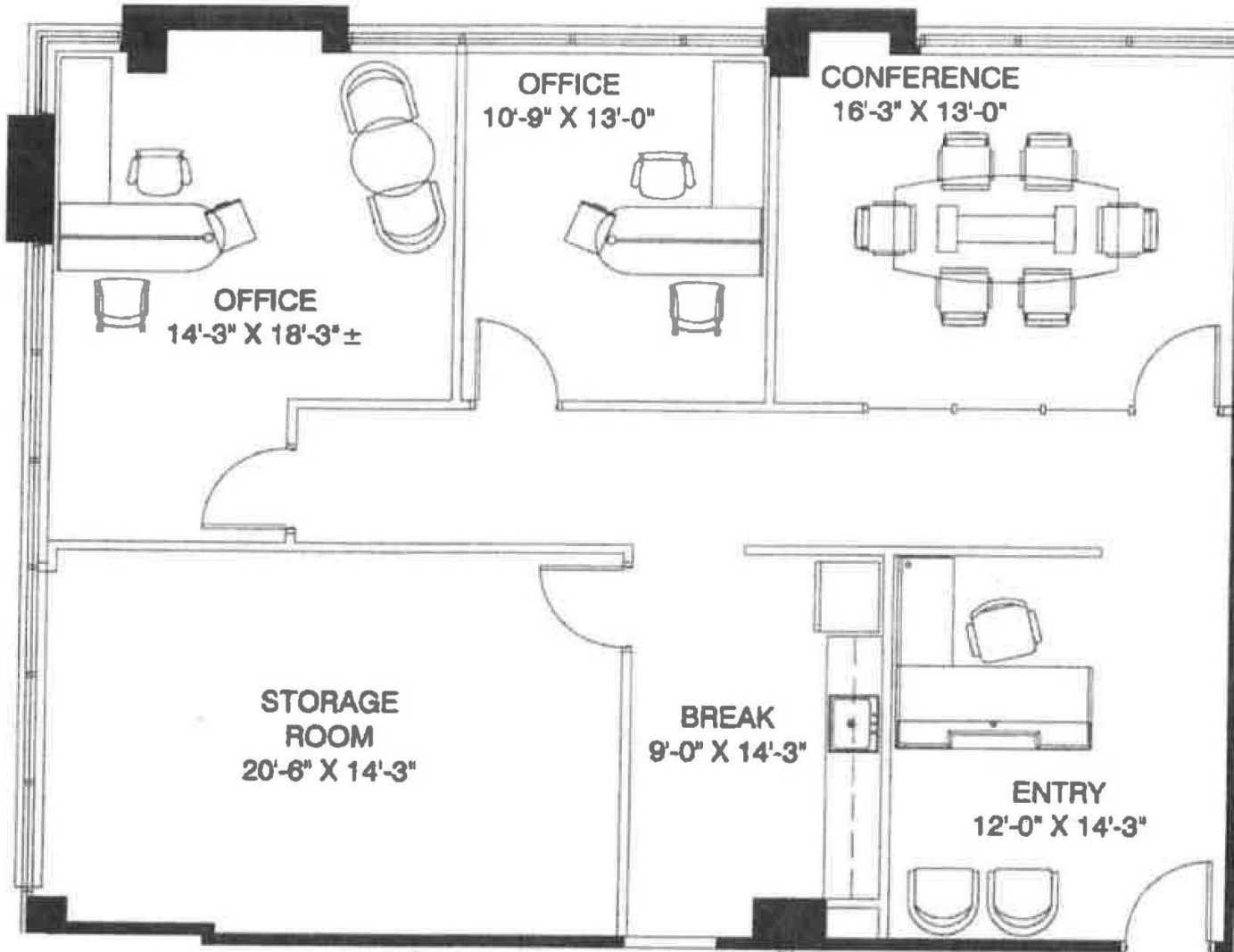
Crown Plaza
PICTURES /
EXTERIOR



11498 Luna Rd

Crown Plaza I

Crown Plaza I
11498 Luna Rd
Farmers Branch, TX 75234

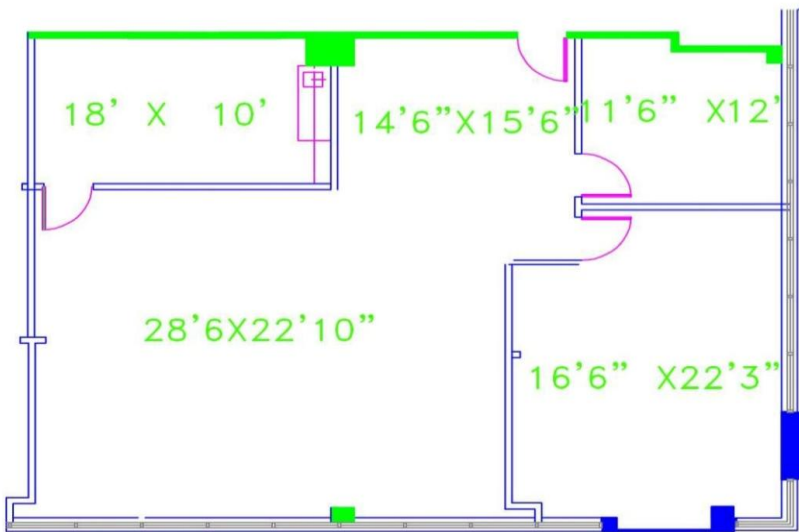


Suite 105
1st Floor
1,655 SF

11498 Luna Rd

Crown Plaza I

Crown Plaza I
11498 Luna Rd
Farmers Branch, TX 75234

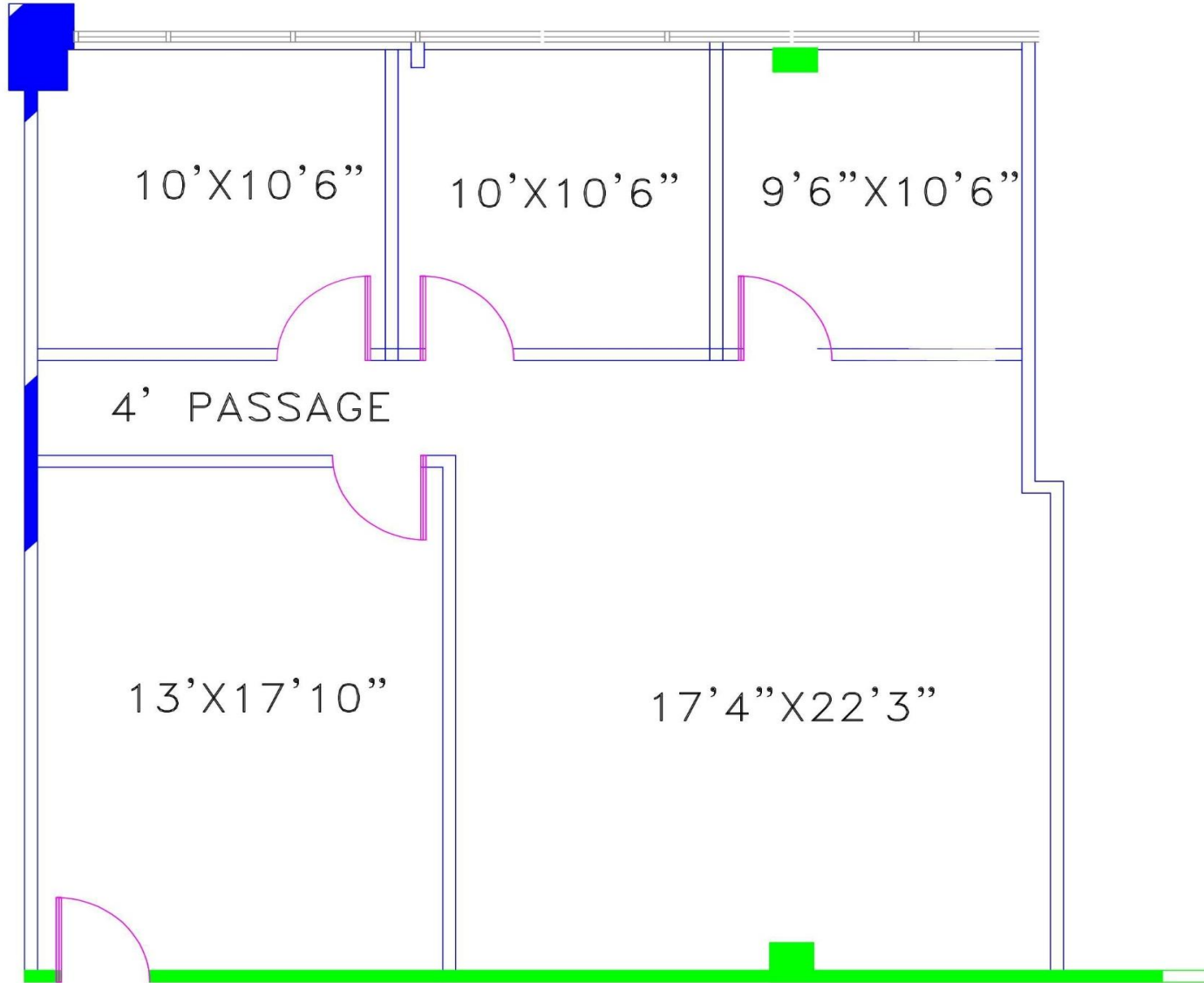


Suite 106
1st Floor
1,776 SF

11498 Luna Rd

Crown Plaza I

Crown Plaza I
11498 Luna Rd
Farmers Branch, TX 75234



Suite 207

2nd Floor

1,184 SF

11498 Luna Rd

Crown Plaza I

Crown Plaza I
11498 Luna Rd
Farmers Branch, TX 75234

Crown Plaza I



11498 Luna Rd

Crown Plaza I

Crown Plaza I
11498 Luna Rd
Farmers Branch, TX 75234

FOR MORE INFORMATION
PLEASE CONTACT:

Daniel Shin

President & Principal Broker
Daniel.shin@unitedshinryu.com
P 214-470-9724

United Shinryu Brokerage LLC
2828 E Trinity Mills Rd.
Suite# 340, Carrollton, TX 75006
www.unitedshinryu.com

