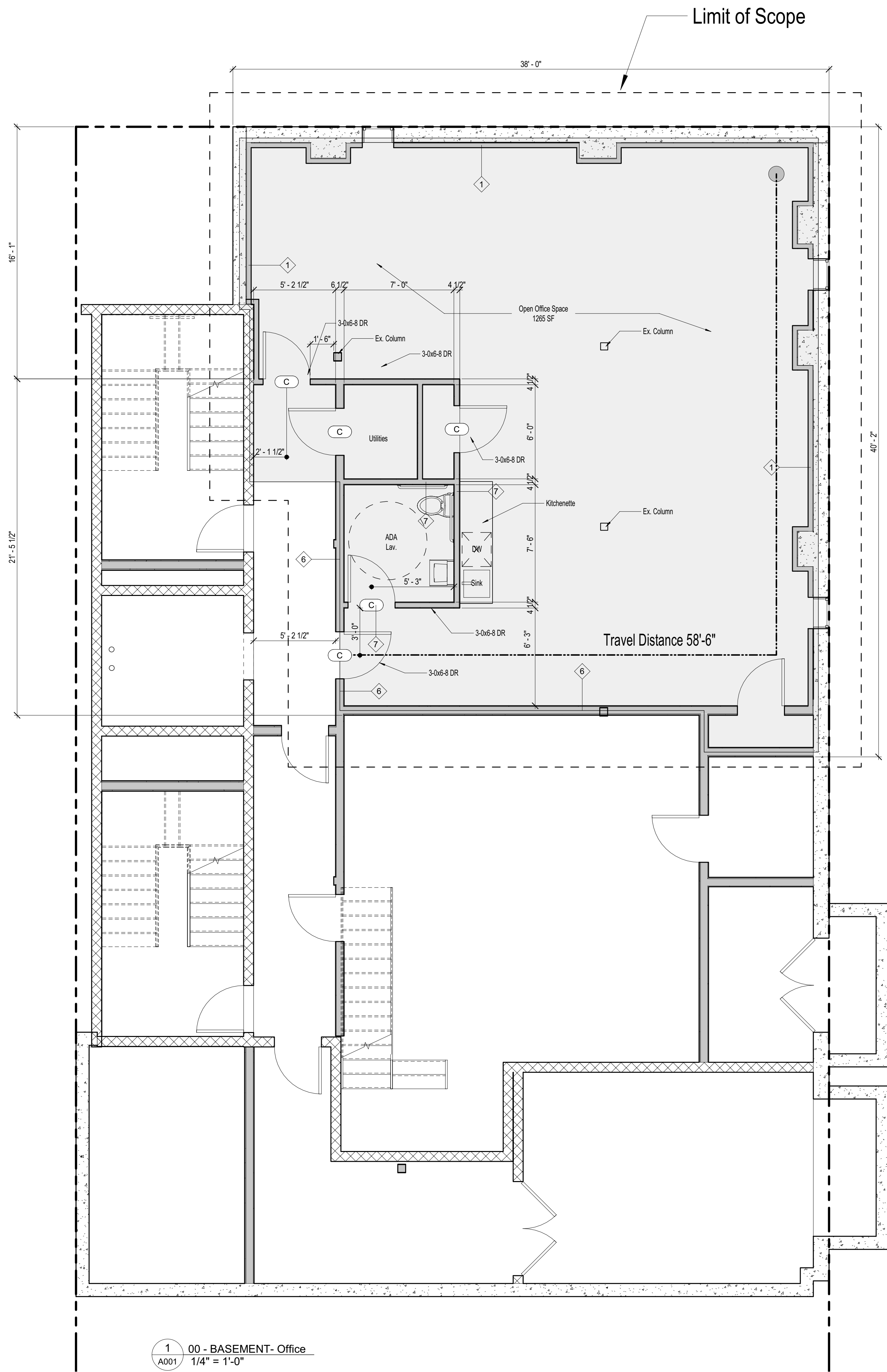
[illegible]

**MIXED USE BUILDING:
2600-04 GIRARD AVE.
Philadelphia PA 19130**

A001



APPLICABLE CODES AND ORDINANCES

ZONING ORDINANCE	TITLE 14- PHILADELPHIA CODE OF ORDINANCES, ZONING AND PLANNING	
BUILDING CODES	INTERNATIONAL BUILDING CODE (IBC 2018)	INTERNATIONAL MECHANICAL CODE (IMC 2018)
	PENNSYLVANIA STATE FIRE AND PANIC CODE	NATIONAL ELECTRICAL CODE (NEC 2017)
	CITY OF PHILADELPHIA BUILDING CODE	INTERNATIONAL FUEL GAS CODE (IFGC 2018)
	CITY OF PHILADELPHIA PLUMBING CODE 2004	INTERNATIONAL ENERGY CONSERVATION CODE (IECC 2018)
ACCESSIBILITY	ICC/ANSI A117.1-2009/ FAIR HOUSING ACT	
LIFE SAFETY	NFPA 101	

DESCRIPTION OF WORK

Office Space Tenant Fit Out in Basement

OCCUPANCY CLASS: B

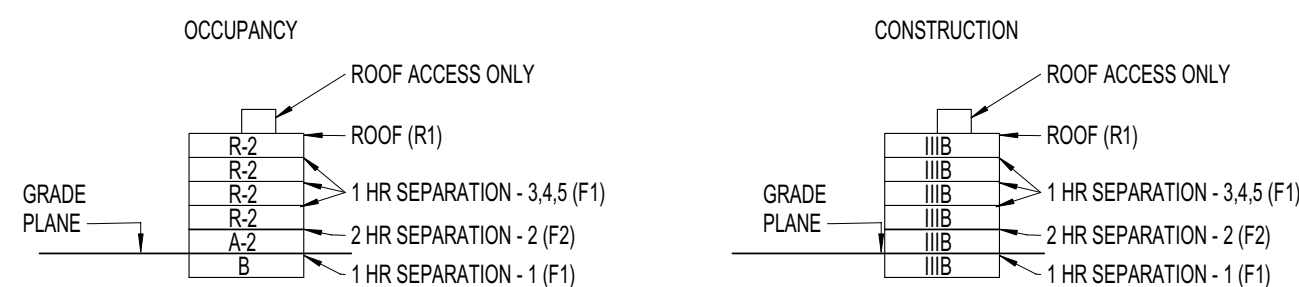
FIRE PROTECTION SYSTEM: NFPA 13

BUILDING HEIGHT AND AREA MODIFICATIONS (TABLE 504.3, 504.4, 506.2)

HORIZONTAL BUILDING SEPARATION ALLOWANCE (509.2)

B / A2: 1 Hour Horz. Separation
A2 / R2: 1 Hour Horz. Separation

OCCUPANCY & CONSTRUCTION



EGRESS

MAX. ALLOWABLE TRAVEL DISTANCE (TABLE 1016.1)	SPRINKLER PROVIDED	250'
MIN. ALLOWABLE REMOTENESS	SPRINKLER PROVIDED	1/3 OVERALL DIAGONAL DIMENSION
OCCUPANT LOAD TABLE (TABLE 1004.1.1)	USE GROUP B. 150 SF/OCCUPANT	FLOOR CELLAR SQT 1265 SF OCCUPANTS 9

EGRESS WIDTH (SEC. 1005.1)	REQUIRED	PROVIDED
TOTAL OCC./FLR x 3 = REQ. STAIR WIDTH	30"	36" PER EXIT ENCLOSURE
TOTAL OCC./FLR x 2 = REQ. CORRIDOR/EXIT PASSAGEWAY	30"	36" PER EXIT

4. <u>HORIZ. ASSEMBLY BTWN USES</u>	1 HR	UL DESIGN - L570
5. <u>FIRE PARTITION (SEC. 708)</u> EXIT ENCLOSURE (SEC 1020.1) TENANT SEPARATION WALL (SEC. 708) CORRIDOR WALL (SEC. 1018.1)	2 HR 1 HR 2 HR	UL-U805 UL-U311 UL-U311
6. <u>INTERIOR LOAD BEARING WALLS & COLUMNS</u>	0 HR	-
7. <u>FLOOR/CEILING ASSEMBLIES (SEC.711)</u>	1 HR 2 HR	UL DESIGN - L570 UL DESIGN - L538 2HR SEPARATION REQUIRED AS PART OF HORIZONTAL SEPARATION PER IBC SEC 1026
8. <u>ROOF ASSEMBLIES (SEC.711)</u> TABLE 601	0 HR	ICC-ES ESR-1153

NOTE: ADDITIONAL PERMIT SUBMISSIONS TO BE MADE FOR FIRE SUPPRESSION, ELECTRICAL, MECHANICAL, PLUMBING AND SIGNAGE



1 00 - BASEMENT- Office
A001 1/4" = 1'-0"