



FOR LEASE OR SALE

2401 N Ritter Ave

Indianapolis, IN 46218

Yard Expansion and Interior Renovations Underway!

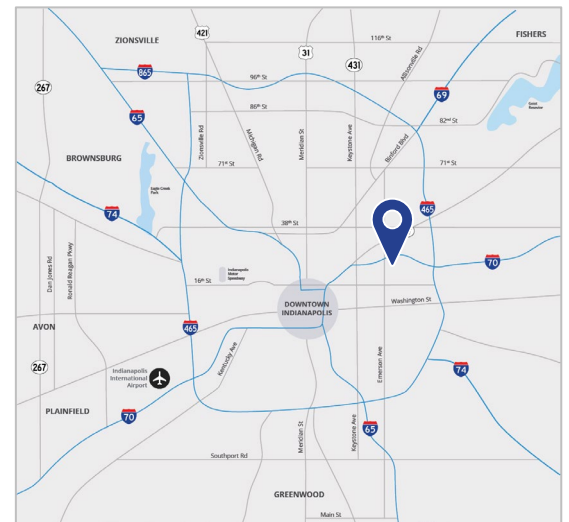
Property Highlights

- ± 19,520 SF building situated on ± 4.55 acres
- Built in 1969 | Expanded in 1995
- Power: 2,000 amps with additional 3,000 amps available
- 4 drive-in doors including 800 SF covered loading area
- Zoned I-3
- Air conditioned throughout
- Immediately available
- Interstate visibility from I-70
- Contact Broker for pricing

George Manley SIOR

+1 317 713 2166

george.manley@colliers.com



Colliers Indianapolis
[colliers.com](https://www.colliers.com)

N RITTER AVE

Secure Outdoor Storage

Site Plan & Specifications	
Total Building	± 19,520 SF
Warehouse	17,500 SF
Office	2,020 SF
Clear Height	14' - 20'
Doors	4 Total (1) 14' x 12' (1) 14' x 10' (1) 14' x 14' (1) 8' x 8'
Land	± 4.55 AC
Year Built	1969
Power	2,000 amps with additional 3,000 amps available
HVAC	Air conditioned throughout



Renovations

Secure outdoor storage: Adding heavy-duty stone and asphalt millings.

Site circulation: Demolishing an outbuilding to improve access.

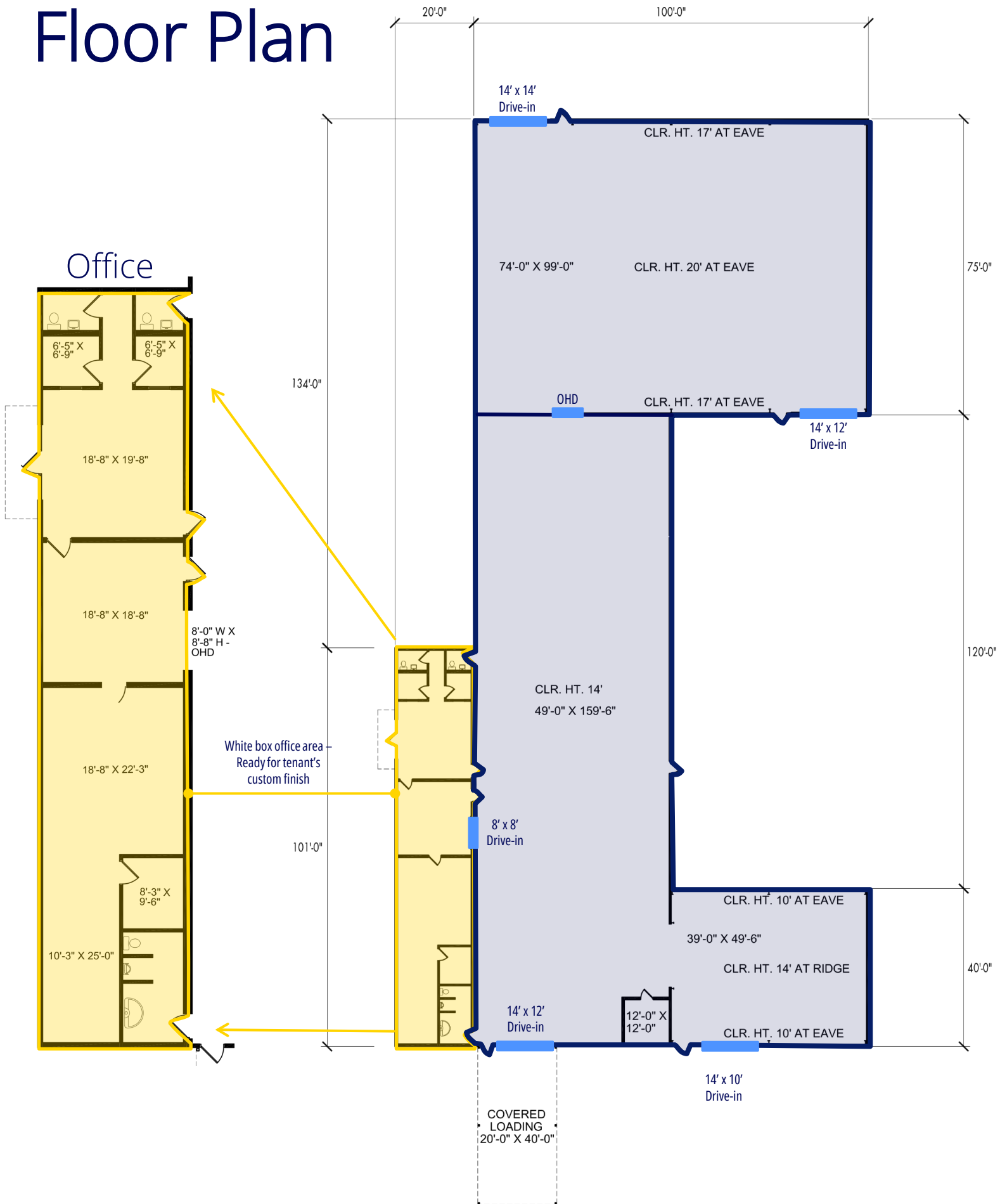
Building updates: Reconfigured office space and new LED lighting throughout.

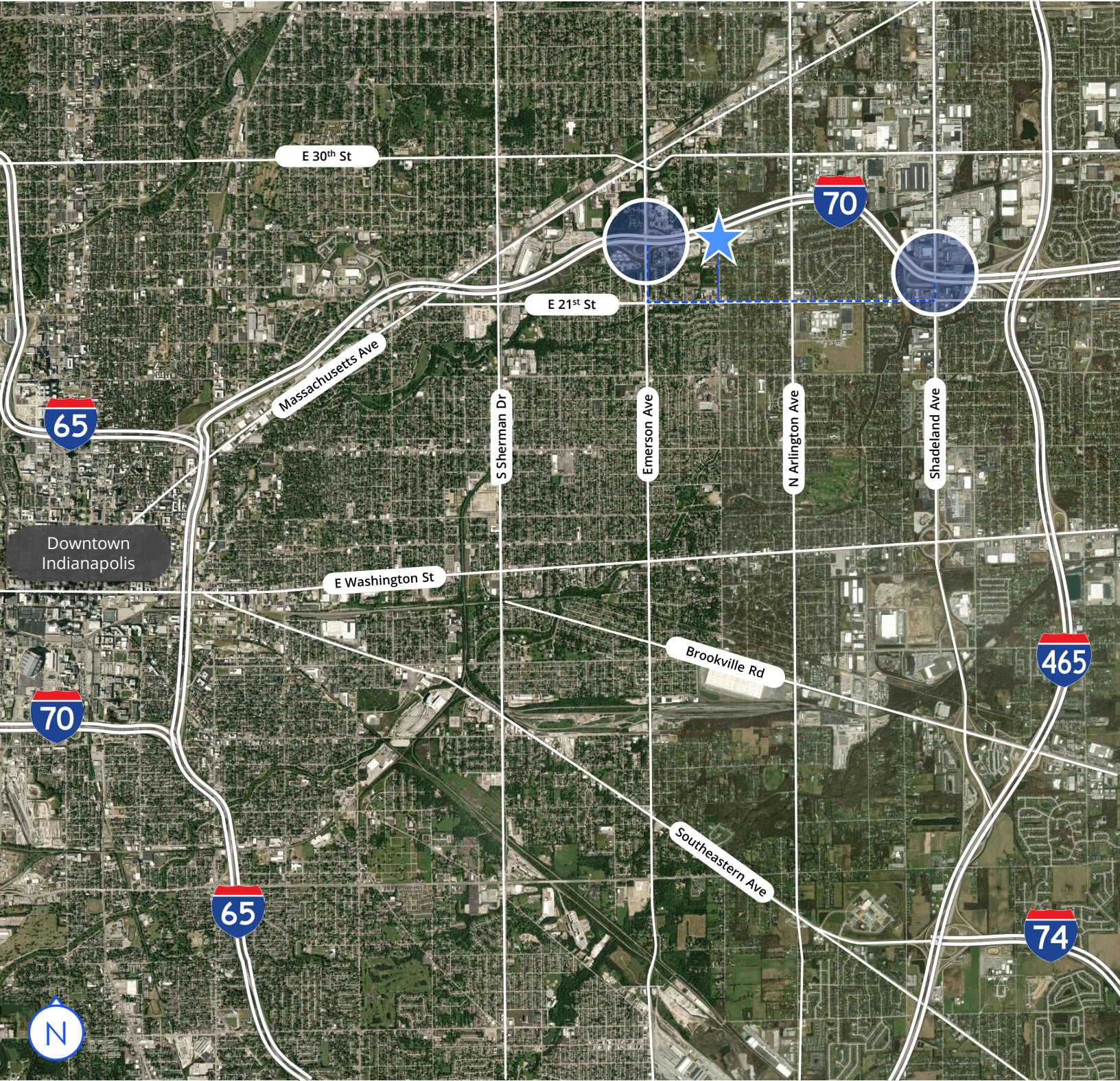
Site prep: Completed tree removal. Improved interstate visibility

Customization: Custom tenant finishes are available.



Floor Plan





Drive Times

I-70 E	3 min	Downtown Indy	1 min
I-465	6 min	IND Airport	21 min
I-74	12 min	Park 100	22 min
I-69	14 min		
I-65	16 min		