

**FOR LEASE**

# 150 N DURANGO DRIVE

Las Vegas, NV 89145



**Pete Janemark, CCIM**

Senior Vice President

D: 702.527.7923 | C: 702.885.7383

[pete.janemark@svn.com](mailto:pete.janemark@svn.com)

NV #S.76731



All SVN® offices are independently owned and operated.

# PROPERTY SUMMARY



## OFFERING SUMMARY

<b>BUILDING SIZE:</b>	17,987 SF
<b>AVAILABLE SF:</b>	2,599 SF
<b>LOT SIZE:</b>	2.06 Acres
<b>YEAR BUILT:</b>	2001
<b>ZONING:</b>	C-1
<b>APN:</b>	138-28-401-011

## PROPERTY OVERVIEW

This elegant colonial style two story office building features upgraded finishes, a large open lobby area, high ceilings, and card-lock security. The building features high ceilings and wide hallways throughout, as well as a very elegant double stairway. A community conference room is also available for use by all tenants within the building.

## PROPERTY HIGHLIGHTS

- Plentiful covered parking available for tenants
- Built in workspace cubicles with cabinetry
- Reception, Six (6) private offices, and conference room
- Community conference room

**PETE JANEMARK, CCIM**

O: 702.527.7923

pete.janemark@svn.com

NV #S.76731

## COMMUNITY CONFERENCE ROOM

### CONFERENCE CENTER DESCRIPTION

Tenants at this property also have the ability to use this large, well equipped conference center, complete with a catering kitchen, vending machines, and a media system. This conference center is located on the ground floor, directly inside the main entrance to the building and is available free of charge to existing tenants. Reservations are handled via the on-site management office.



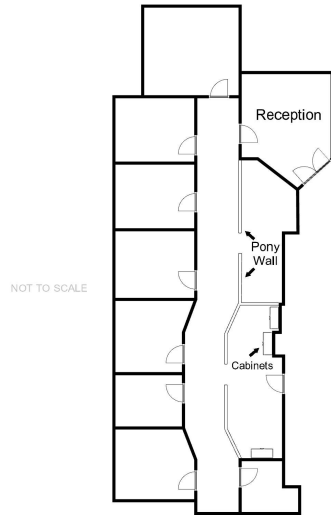
**PETE JANEMARK, CCIM**

O: 702.527.7923

pete.janemark@svn.com

NV #S.76731

# 150 N DURANGO DRIVE - SUITE 290 - ±2,599 SF



## SUITE DESCRIPTION

This elegant second story suite features an elegant reception, six individual offices, four cubicle areas, an 18'x23' conference room, storage, and two entrances.



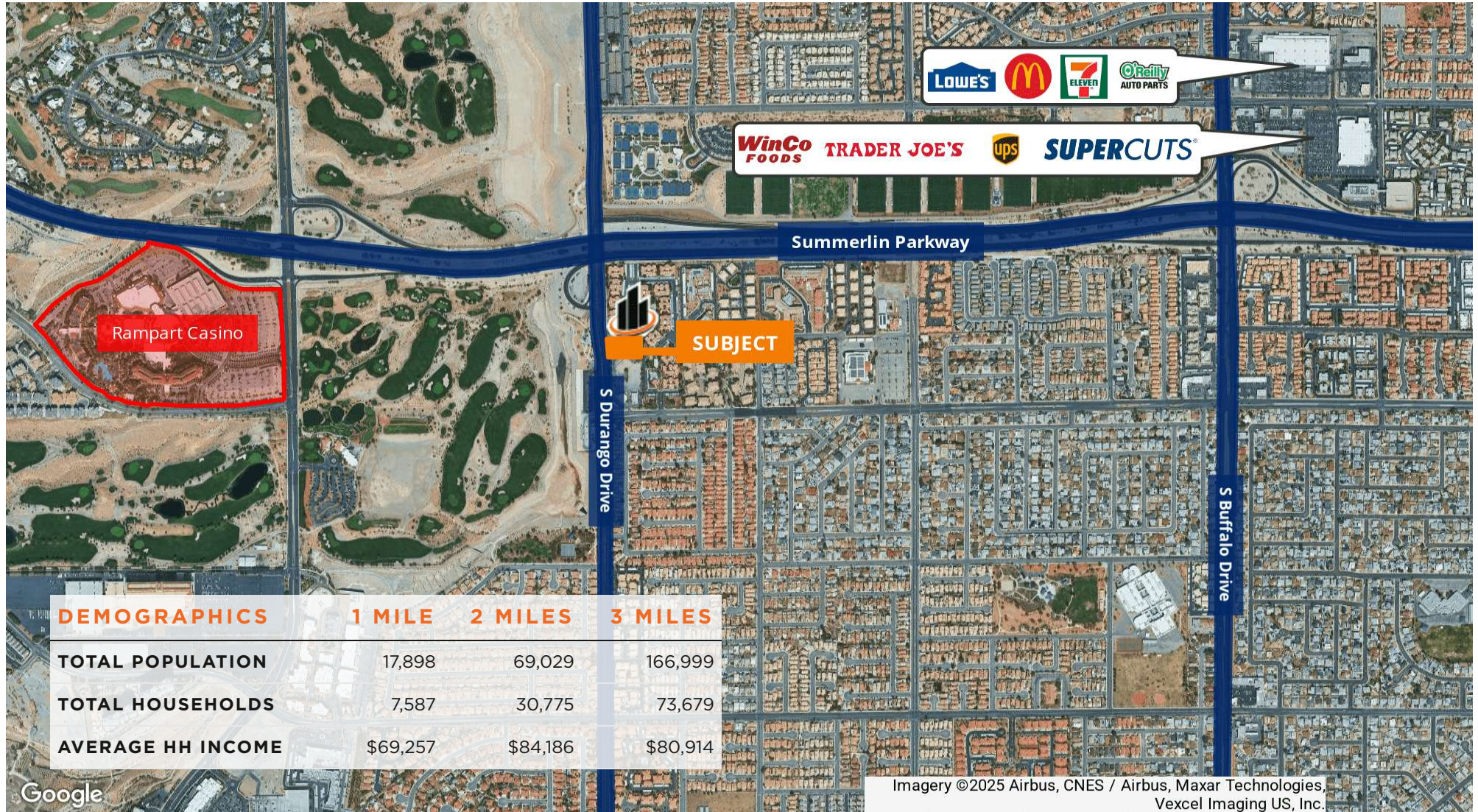
**PETE JANEMARK, CCIM**

O: 702.527.7923

pete.janemark@svn.com

NV #S.76731

# LOCATION MAP



**PETE JANEMARK, CCIM**

O: 702.527.7923

pete.janemark@svn.com

NV #S.76731