

# SEM MG

BUY. MANAGE. SELL.

S O U T H E A S T E R N M A N A G E M E N T G R O U P

presents:

# 635 east bay



## OFFICE FOR LEASE - PARKING INCLUDED

### GREAT CENTRAL LOCATION ON THE PENINSULA

▲ Suite G                      1600 SF                      \$3,800.00 / month

- ▲ Charming free-standing carriage house on the grounds of The Faber House located at the corner of East Bay Street and Amherst Street
- ▲ 5 offices, 1 full bathroom, 1 half bathroom, & a full kitchen.
- ▲ Tenants use Phone & WiFi in place on an internal network for \$150 / mo.

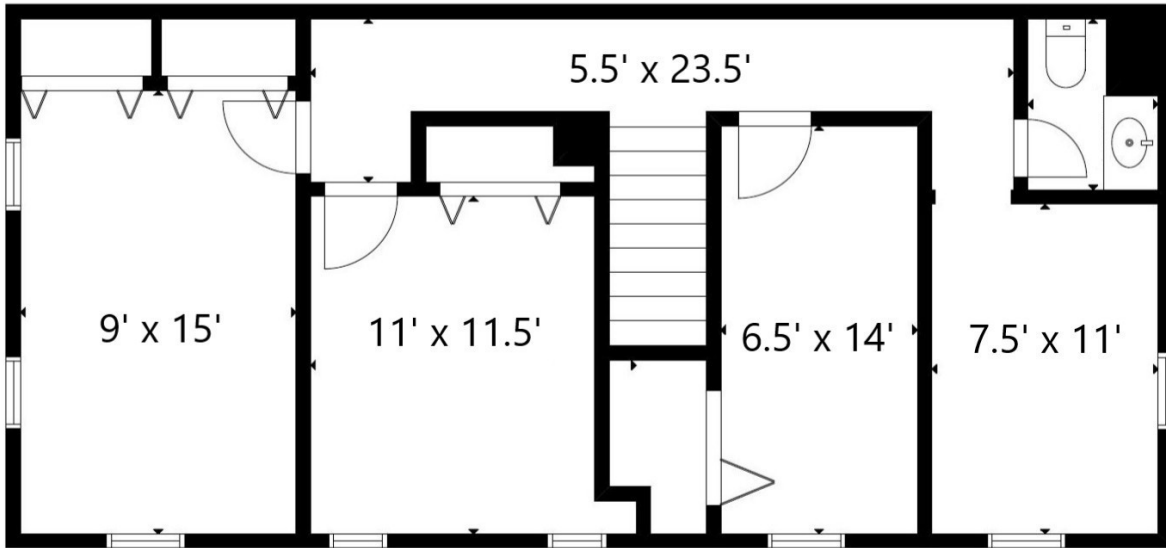
contact:

Chad Yonce, CCIM, CPM  
843.343.1923  
yonce@semgsc.com

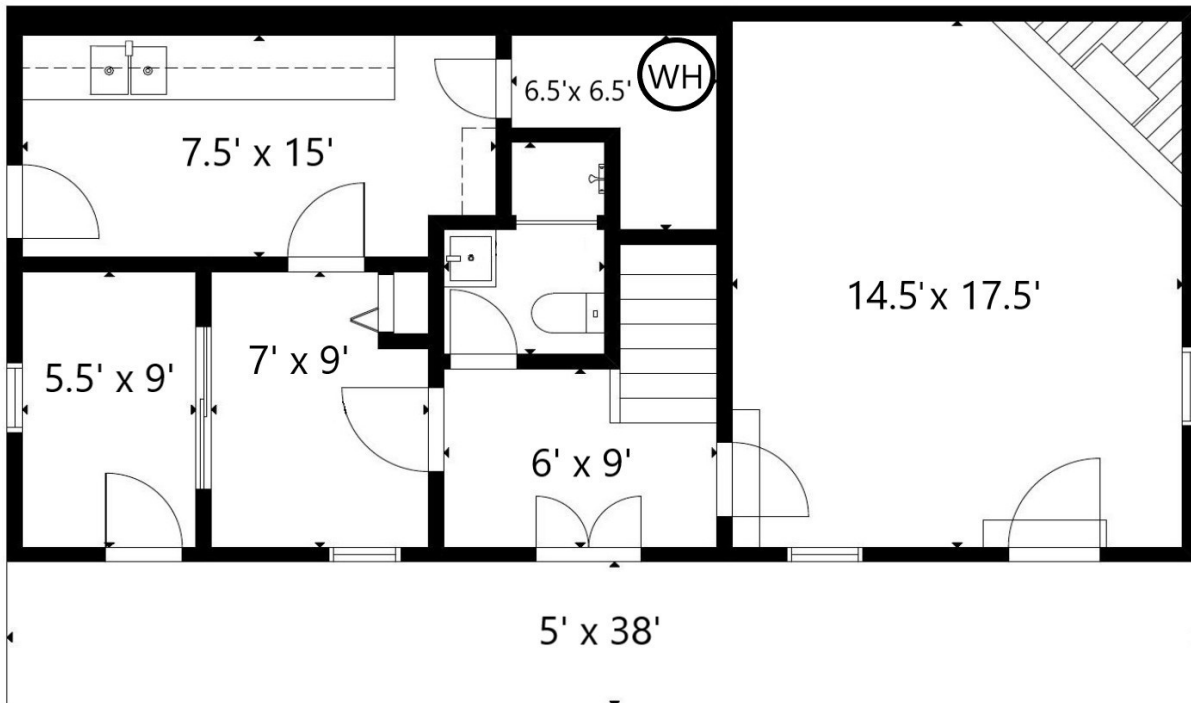
151 King Street  
Charleston, SC 29401

[www.semgsc.com](http://www.semgsc.com)

Faber House  
635 East Bay Street - Suite G



FLOOR 2



FLOOR 1

*\*This floor plan is not to scale and is for illustrative purposes only\**