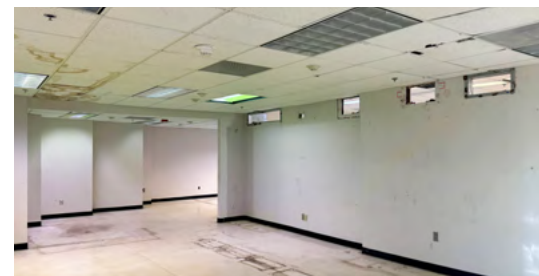


FOR LEASE

Uptown Office Space Available

222 S. Caldwell Street | Charlotte, NC 28202



KEY HIGHLIGHTS

Discover this versatile former data center, strategically located just blocks from the Mecklenburg County Courthouse and the Charlotte Mecklenburg Government Center, offering unparalleled convenience and accessibility.

- **Former Data Center**
- **Proximity to Key Government Buildings:**
 - Minutes from the Mecklenburg County Courthouse and Charlotte Mecklenburg Government Center
- **Excellent Transportation Access:**
 - Easy access to I-77 and I-277
- **Vibrant Local Amenities:**
 - Enjoy easy access to Fahrenheit, one of Charlotte's hottest rooftop bars!
- **Walkable to:**
 - Spectrum Center & Convention Center (under 10 min)
 - Major corporations like Wells Fargo, BofA, Duke Energy, Ally, and more (10-15 min)
 - Whole Foods Grocery (under 10 min)
 - Uptown Farmers Market
 - Various parks & greenways

AVAILABILITY

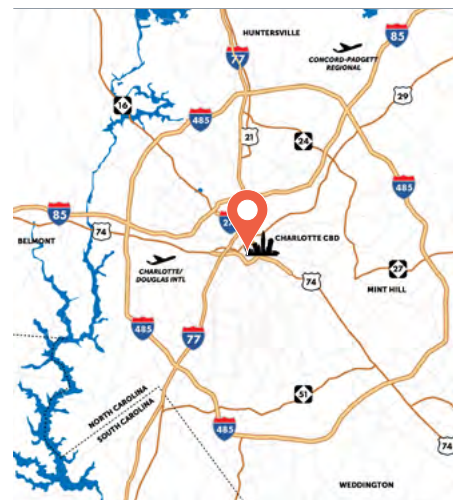
+/- 5,502 SF (Mezzanine Level)

LEASE TERMS

Term Available Now

Rate Call for Pricing

LOCATION



FOR LEASE

Uptown Office Space Available

222 S. Caldwell Street | Charlotte, NC 28202



FLOOR PLAN

