

31771 SHERMAN DRIVE
MADISON HEIGHTS, MICHIGAN

INDUSTRIAL FOR SALE OR LEASE
13,969 Square Feet Available



**SIGNATURE
ASSOCIATES**
KNOW SIGNATURE | KNOW RESULTS



PROPERTY FEATURES

- 13,969 square feet available
- 1,200 square feet of office
- 16'8" clear height
- (1) 12' x 14' grade level doors
- 2000 amps, 227/480 volts power
- Air-conditioning, buss duct, skylights, epoxy floors, and heavy power
- 40 tons of rooftop AC in shop
- Air lines throughout
- Lease Rate: \$9.00/sq. ft. NNN
- Sale Price: \$1,750,000 (\$125.28/sq. ft.)



For more information, please contact:

PAUL HOGE
(248) 948 0103
paulhoge@signatureassociates.com

JOHN DROZE
(248) 948 4191
jdroze@signatureassociates.com

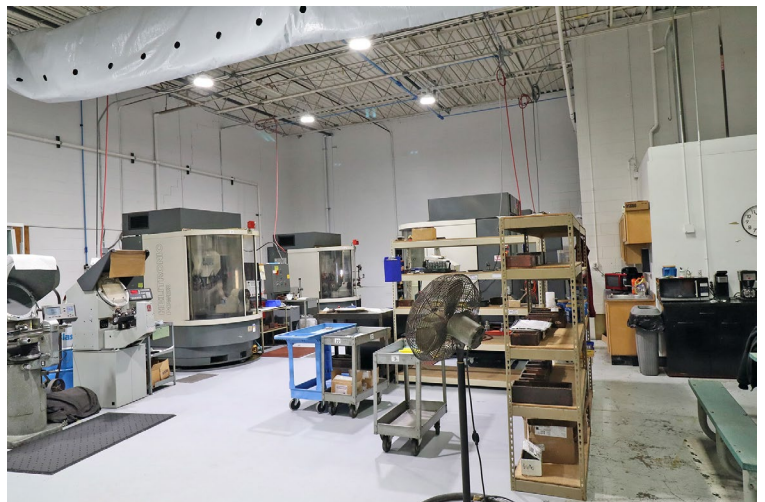
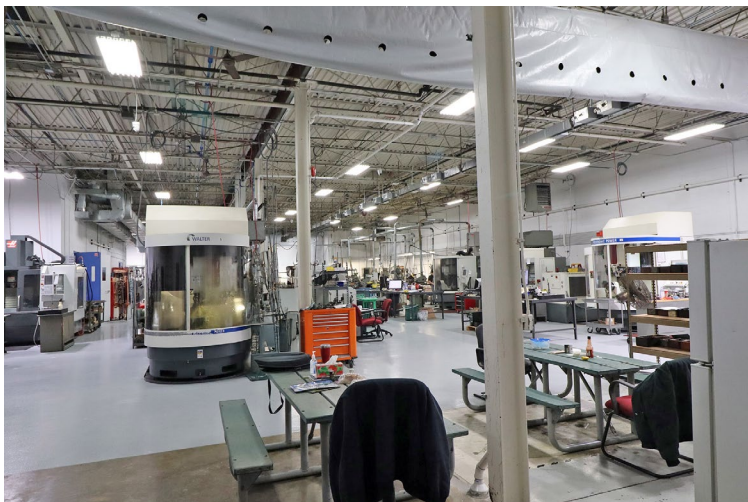
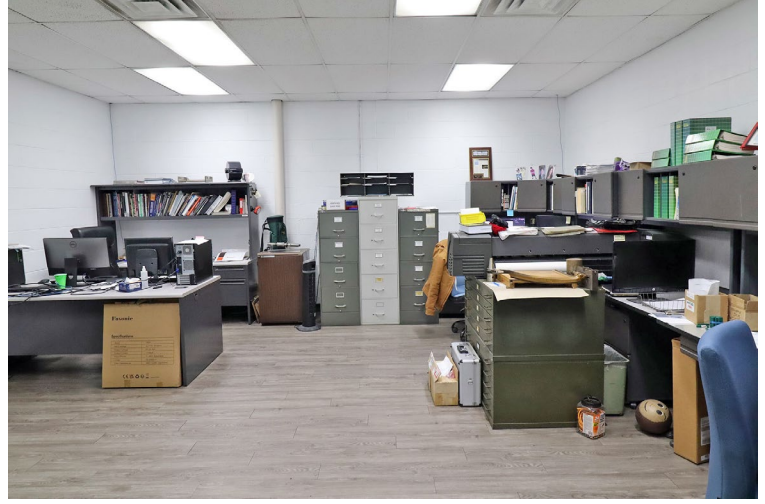
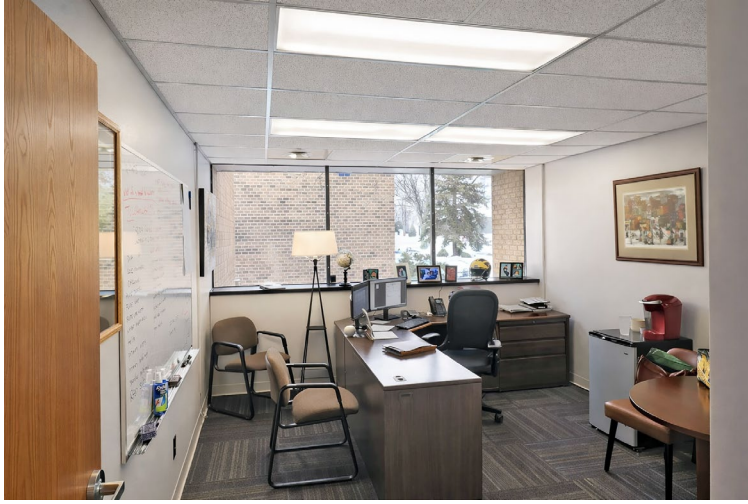
GRANT BRUCE
(248) 948 4188
gbruce@signatureassociates.com

31771 Sherman Drive – Madison Heights, Michigan

Industrial For Sale or Lease

13,969
Square Feet
AVAILABLE

Interior Photos



For more information, please contact:

PAUL HOGE
(248) 948 0103

JOHN DROZE
(248) 948 4191

GRANT BRUCE
(248) 948 4188

SIGNATURE ASSOCIATES
One Towne Square, Suite 1200
Southfield, MI 48076
www.signatureassociates.com

31771 Sherman Drive – Madison Heights, Michigan

Industrial For Sale or Lease

13,969
Square Feet
AVAILABLE



For more information, please contact:

PAUL HOGE
(248) 948 0103

JOHN DROZE
(248) 948 4191

GRANT BRUCE
(248) 948 4188

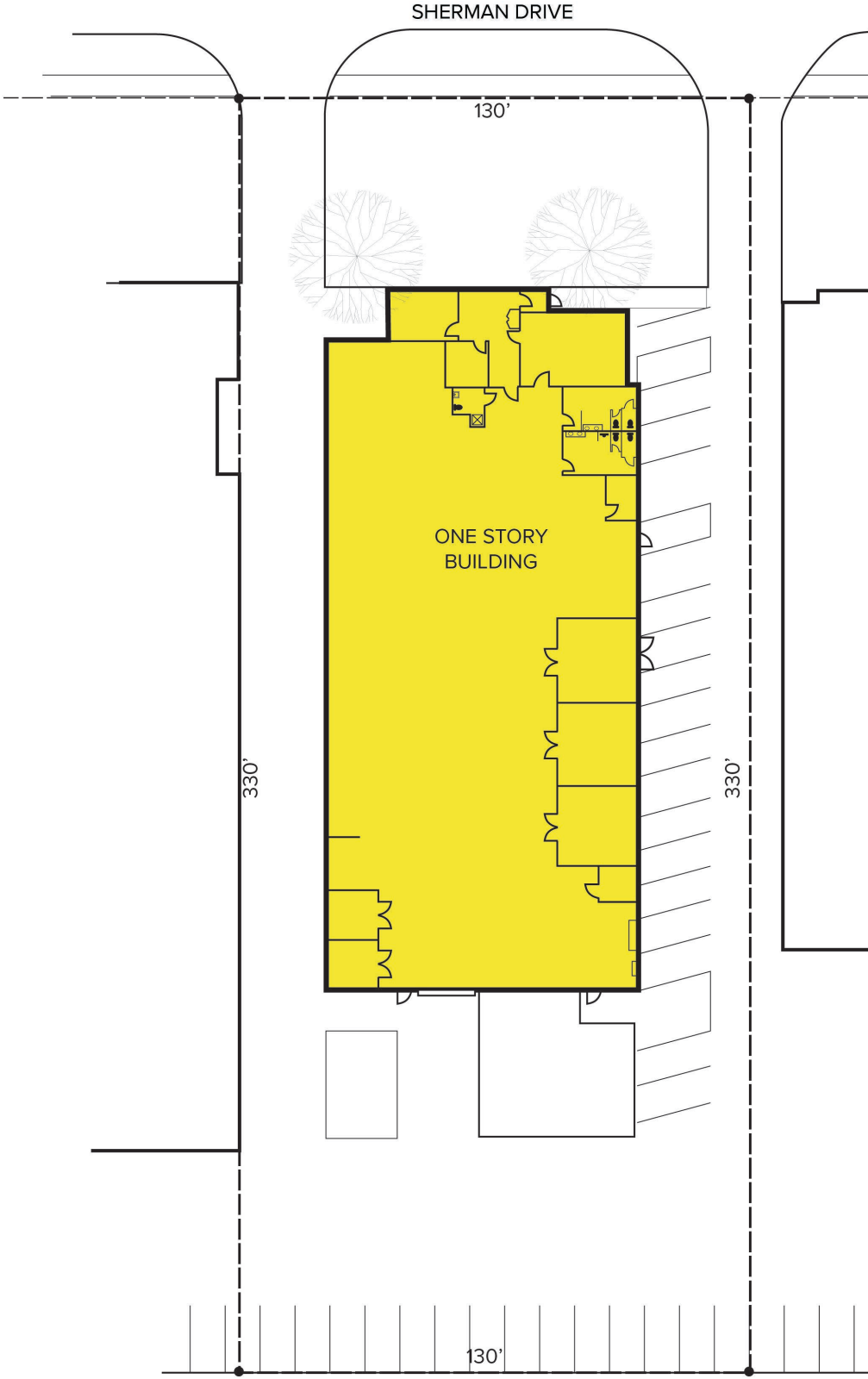
SIGNATURE ASSOCIATES
One Towne Square, Suite 1200
Southfield, MI 48076
www.signatureassociates.com

31771 Sherman Drive – Madison Heights, Michigan

Industrial For Sale or Lease

13,969
Square Feet
AVAILABLE

Site Plan



For more information, please contact:

PAUL HOGE
(248) 948 0103

JOHN DROZE
(248) 948 4191

GRANT BRUCE
(248) 948 4188

SIGNATURE ASSOCIATES
One Towne Square, Suite 1200
Southfield, MI 48076
www.signatureassociates.com

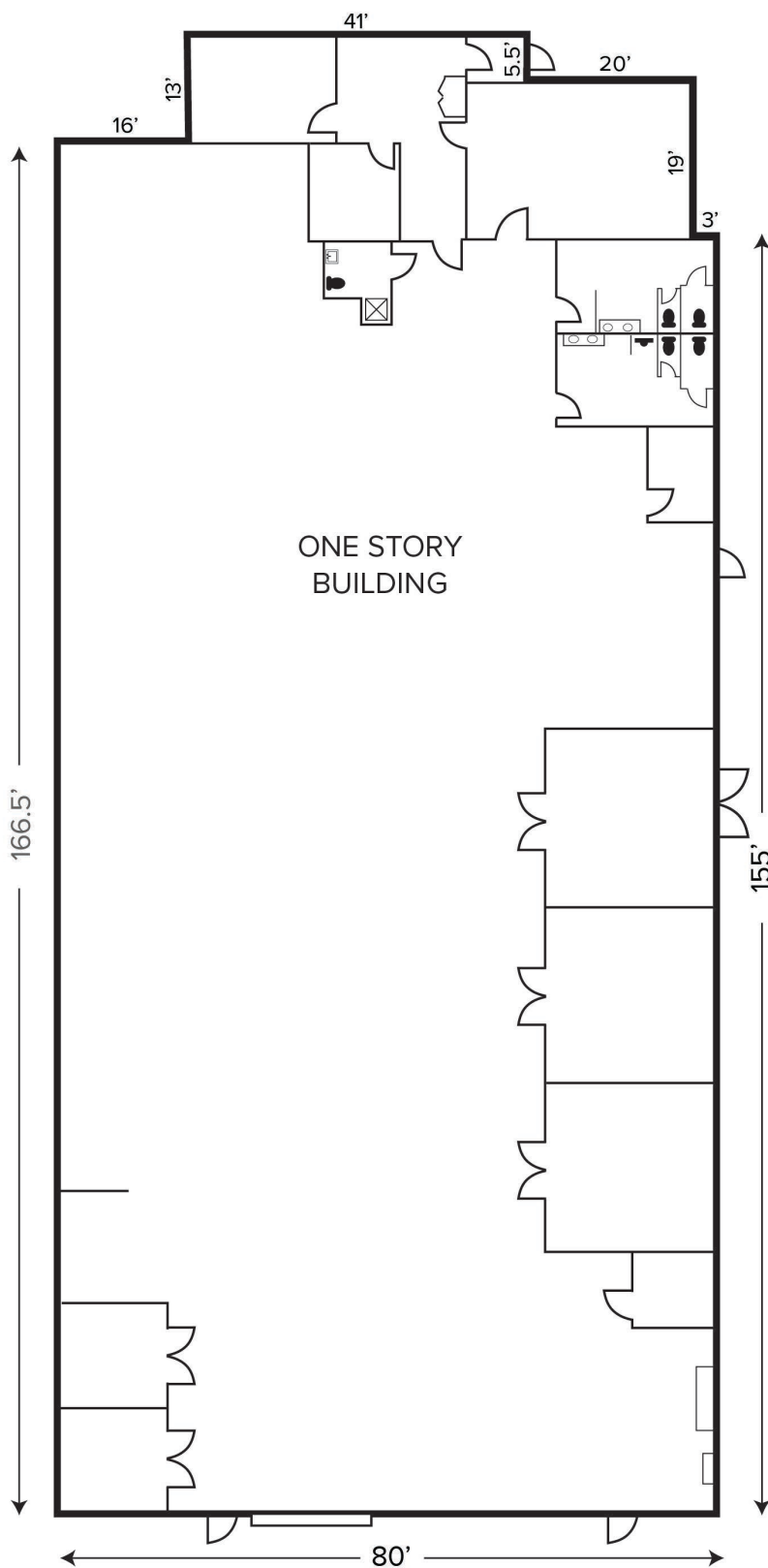
Information is subject to verification and no liability for errors or omissions is assumed. Price is subject to change and listing withdrawal.

31771 Sherman Drive – Madison Heights, Michigan

Industrial For Sale or Lease

13,969
Square Feet
AVAILABLE

Floor Plan



For more information, please contact:

PAUL HOGE
(248) 948 0103

JOHN DROZE
(248) 948 4191

GRANT BRUCE
(248) 948 4188

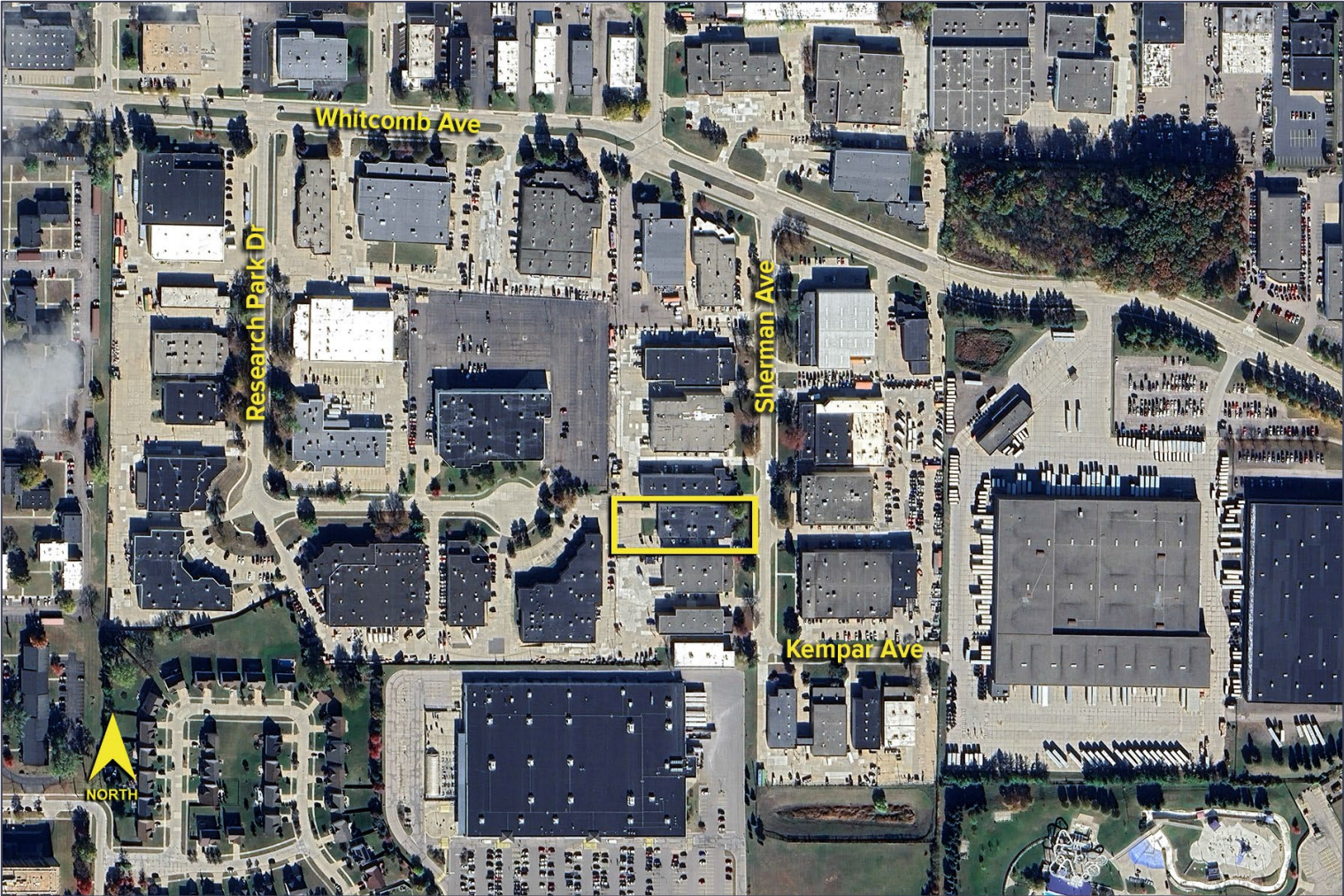
SIGNATURE ASSOCIATES
One Towne Square, Suite 1200
Southfield, MI 48076
www.signatureassociates.com

31771 Sherman Drive – Madison Heights, Michigan

Industrial For Sale or Lease

13,969
Square Feet
AVAILABLE

Aerial



For more information, please contact:

PAUL HOGE
(248) 948 0103

JOHN DROZE
(248) 948 4191

GRANT BRUCE
(248) 948 4188

SIGNATURE ASSOCIATES
One Towne Square, Suite 1200
Southfield, MI 48076
www.signatureassociates.com

Information is subject to verification and no liability for errors or omissions is assumed. Price is subject to change and listing withdrawal.