

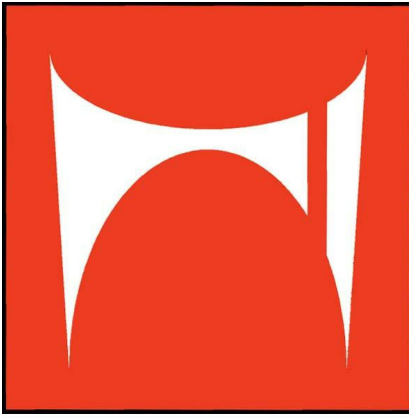
② First Floor Plan
3/32" = 1'-0"

FLOOR PLAN NOTES

- UNLESS OTHERWISE INDICATED ON THE DRAWINGS OR IN THE DOCUMENTS OR SPECIFICATIONS, THE FOLLOWING NOTES APPLY:
- DO NOT SCALE DRAWINGS. WRITTEN DIMENSIONS GOVERN. IF DIMENSIONS ARE IN QUESTION OBTAIN CLARIFICATION FROM ARCHITECT. SHOULD THE CONTRACTOR IDENTIFY ANY DISCREPANCIES IN DIMENSIONS, NOTIFY THE ARCHITECT IMMEDIATELY.
 - ALL DIMENSIONS ARE GIVEN TO GRIDLINES, FACE OF STUD/ MASONRY WALLS AND CENTERLINE OF STRUCTURAL COLUMNS. ALL DIMENSIONS MARKED "CLEAR" SHALL BE MAINTAINED AS A CLEAR WIDTH BETWEEN FINISHES.
 - ALL CONSTRUCTION SHALL MEET APPLICABLE BUILDING CODES AS LISTED IN CODE SUMMARY AND AS REQUIRED BY LOCAL AUTHORITIES HAVING JURISDICTION (AHJ).
 - ALL WORK NOTED "BY OTHERS", "NIC", OR "SUPPLIED BY OWNER" SHALL BE PROVIDED BY OWNER OR OWNER'S CONSULTANT UNDER A SEPARATE AGREEMENT. ALL WORK TO BE PROVIDED BY OWNER AND INSTALLED BY CONTRACTOR TO BE DEFINED IN AN EXHIBIT TO CONSTRUCTION CONTRACT. "ALIGN" SHALL MEAN TO ACCURATELY LOCATE FINISH FACES IN THE SAME PLANE.
 - "SIMILAR" MEANS COMPARABLE CHARACTERISTICS FOR THE CONDITIONS NOTED. VERIFY DIMENSIONS AND ORIENTATION ON PLANS AND ELEVATIONS.
 - SEE WALL TYPE PLANS FOR ADDITIONAL NOTATIONS INDICATING WALL TYPE REFERENCES.
 - ALL DIMENSIONS, ELEVATIONS AND CONDITIONS INDICATED IN THE DOCUMENTS ARE TO BE FIELD VERIFIED BY THE CONTRACTOR PRIOR TO FABRICATION OF ANY MATERIAL OR BEGINNING CONSTRUCTION IN ANY AREA. ANY DISCREPANCIES IN ACTUAL DIMENSIONS OR CONDITIONS ARE TO BE BROUGHT TO THE ARCHITECT'S/OWNER'S ATTENTION FOR RESOLUTION WITH THE WORK. WHERE THE WORD "VERIFY" OCCURS NEXT TO A DIMENSION, THE GENERAL CONTRACTOR IS RESPONSIBLE FOR VERIFYING DIMENSIONS (WITH MANUFACTURERS, ETC.) AS REQUIRED FOR PROPER FIT. PROVIDE FIRESTOPPING AND DRASTOPPING PER APPLICABLE REFERENCED BUILDING CODE(S) AT ANY AND ALL WALLS, PARTITIONS, BULKHEADS, FURRING, CHASES, AND COLUMN ENCLOSURES WHERE REQUIRED, AND AT PENETRATIONS OF FIRE-RESISTANCE RATED ENCLOSURES AND SIMILAR CONSTRUCTION. REFER TO MEP DRAWINGS AND SPECIFICATIONS FOR THROUGH-PENETRATIONS.
 - CONTRACTOR TO PROVIDE BLOCKING FOR ALL WALL MOUNTED ACCESSORIES INCLUDING, BUT NOT LIMITED TO, CABINETS, TOILET ACCESSORIES, SHELVING, HEADBOARDS, MIRRORS, ARMOIRE TIP PROTECTION CHAIN, TOWEL BARS, AND DRAPERIES. PROVIDE FIRE RETARDANT BLOCKING IN ALL RATED WALLS.
 - ALL CONDUIT OR PIPING NOT OTHERWISE CONSEALED IN WALLS OR CHASES SHALL BE LOCATED WITHIN METAL STUD/ CHANNEL FURRING AND FINISHED TO THE LEVEL OF THE ADJACENT SURFACES, WHETHER OR NOT INDICATED ON DRAWINGS.
 - CONTRACTOR TO COORDINATE TUB AND SHOWER UNIT ROUGH OPENING SIZE AND MAINTAIN FIRE AND SOUND RATING AROUND TUB AND SHOWER UNITS.
 - PRIOR TO CONSTRUCTION OF THE PROJECT, THE CONTRACTOR SHALL COORDINATE AND VERIFY THE LOCATION OF LIGHTING FIXTURES AND ELECTRICAL RECEPTACLES WITH THE OWNERS FURNITURE AND EQUIPMENT PLAN. THE CONTRACTOR SHALL BRING ANY SUSPECTED DISCREPANCIES TO THE ATTENTION OF THE OWNER'S REPRESENTATIVE FOR RESOLUTION PRIOR TO CONSTRUCTION.
 - ALIGN FINISHED FACE OF CONTINUOUS PARTITIONS THAT CHANGE PARTITION TYPES ALONG A STRAIGHT RUN.
 - MAINTAIN ALL CLEARANCES AT ADA GUESTROOMS, BATHROOMS, PUBLIC RESTROOMS AND PUBLIC SPACES.
 - COORDINATE WITH FIRE PROTECTION SUBCONTRACTOR FOR LOCATION OF INSPECTOR'S TEST VALVE AND SIGHT GLASS. PROVIDE FIRE RATED ACCESS PANEL AS APPROPRIATE FOR ALL LOCATIONS.
 - THESE DRAWINGS ARE PREPARED PER ESTABLISHED INDUSTRY STANDARDS AND REPRESENT THE ARCHITECT AND ENGINEERS' DESIGN CONCEPT. THEY ARE NOT INTENDED TO PROVIDE EVERY DETAIL OR CONDITION REQUIRED TO CONSTRUCT THE BUILDING. THE CONTRACTOR, THROUGH SUBMITTALS AND OTHER COORDINATION EFFORTS, IS FULLY RESPONSIBLE FOR PROVIDING A COMPLETE, CODE COMPLIANT AND OPERATIONAL BUILDING WHETHER INDICATED ON THE PLANS OR NOT. ALL WORK SHALL COMPLY WITH HILTON BRAND STANDARDS, UNLESS OTHERWISE APPROVED BY HILTON IN WRITTEN DOCUMENTATION.
 - EXTERIOR BUILDING SIGNAGE AND POOL ARE NOT APPROVED WITHIN THE SCOPE OF THE BUILDING PERMIT. CONTRACTOR TO INSTALL ELECTRICAL JUNCTION BOXES FOR SIGNAGE AND COORDINATE WITH OWNER/ ARCHITECT TO OBTAIN SEPARATE SIGNAGE/ POOL PERMITS.

Rentable Area Schedule	
Name	Area
Tenat 1	2539 SF
Tenat 2	2638 SF
Tenat 3	1259 SF
Tenat 4	1303 SF
Tenat 5	1325 SF
Tenat 6	1590 SF
Tenat 7	1590 SF
Tenat 8	1590 SF
Tenat 9	1590 SF
Tenat 10	1590 SF
Tenat 11	1617 SF

Forest Lake Retail
Haines City, Florida



Marlon Lynn
Architect, PA
A A 2 6 0 0 1 4 7 7

212 East Pine Street
Lakeland, FL 33801
P: 863 802.5966
marlon@marlonlynn.com
https://marlonlynn.com/



This item has been electronically signed and sealed by Marlon D Lynn, PA on the Date and/or Time Stamp shown using a digital signature. Printed copies of this document are not considered signed and sealed and the signature must be verified on any electronic copies.

Project number 20033
Date

No.	Description	Date

First Floor Plan

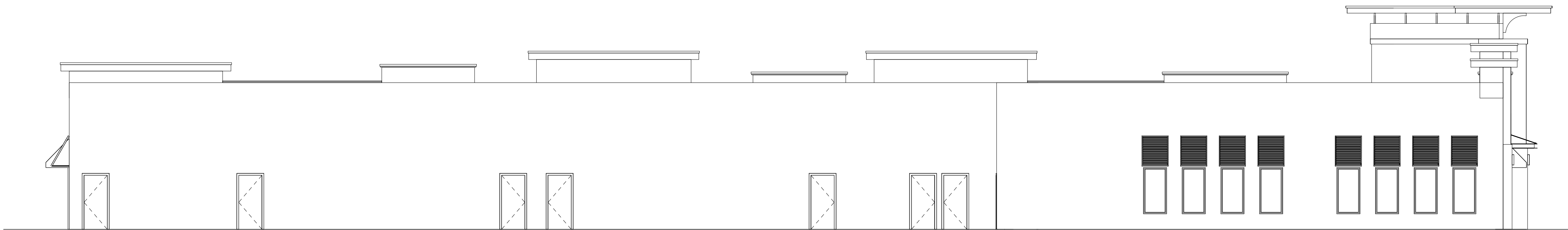
A1.11



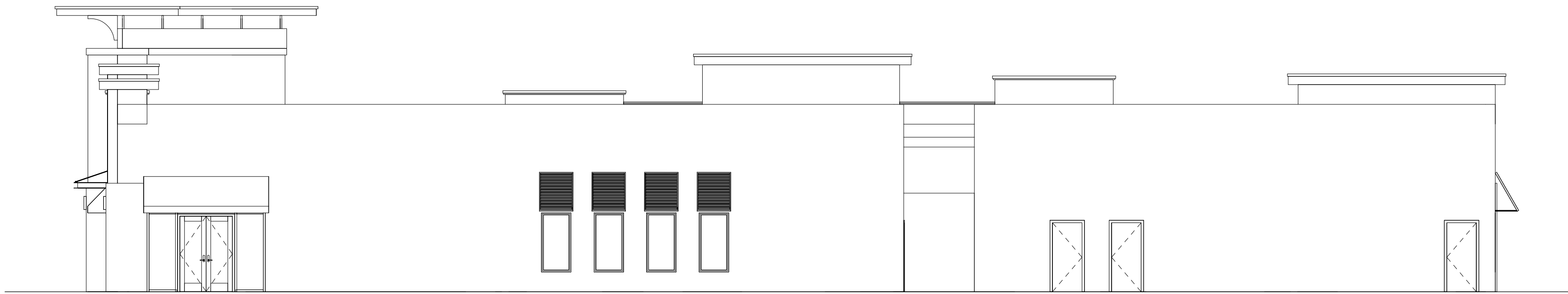
③ West Elevation
1/8" = 1'-0"



② North Elevation
1/8" = 1'-0"



① East Elevation
1/8" = 1'-0"

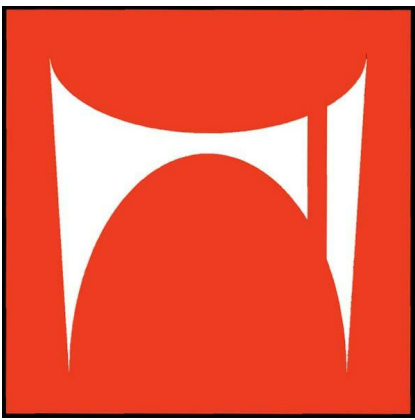


④ South Elevation
1/8" = 1'-0"

ELEVATION LEGEND

- (BK1) BORAL BRICK MASONRY VENEER, TBD
- (EF1) DRYVIT EIFS, FINISH & COLOR TO BE SELECTED FROM STANDARD OPTIONS
- (EF2) DRYVIT EIFS, FINISH & COLOR TO BE SELECTED FROM STANDARD OPTIONS
- (EF3) DRYVIT EIFS, FINISH & COLOR TO BE SELECTED FROM STANDARD OPTIONS
- (MC1) PRE-FABRICATED METAL PANEL CANOPY, COLOR SELECTION TO BE DETERMINED
- (MP1) CENTRIA FORMAWALL DIMENSION SERIES 2" HORIZONTAL, COLOR SELECTION TBD FROM PRISMATIC SERIES
- (MP2) CENTRIA FORMAWALL DIMENSION SERIES 2" HORIZONTAL, COLOR SELECTION TBD FROM PRISMATIC SERIES
- (WDC) TRUGRAIN RESYSTA BY CAROLINA COLOR TONES, COLOR TO BE SELECTED FROM STANDARD OPTIONS
- (WM1) M^CNICHOLS WIRE MESH, 2" WEAVE IN DARK BRONZE FINISH
- (WM2) M^CNICHOLS DECORATIVE WIRE MESH, STAINLESS STEEL, TBD

Forest Lake Retail Haines City, Florida



Marlon Lynn
Architect, P.A.
A A 2 6 0 0 1 4 7 7

212 East Pine Street
Lakeland, FL 33801
P: 863.802.5966
marlon@marlonlynn.com
<https://marlonlynn.com/>



This item has been electronically signed and sealed by Marlon D Lynn, PA on the Date and/or Time Stamp shown using a digital signature. Printed copies of this document are not considered signed and sealed and the signature must be verified on any electronic copies.

Project number 20033
Date

No.	Description	Date

Building Elevations

A2.11