



FOR LEASE

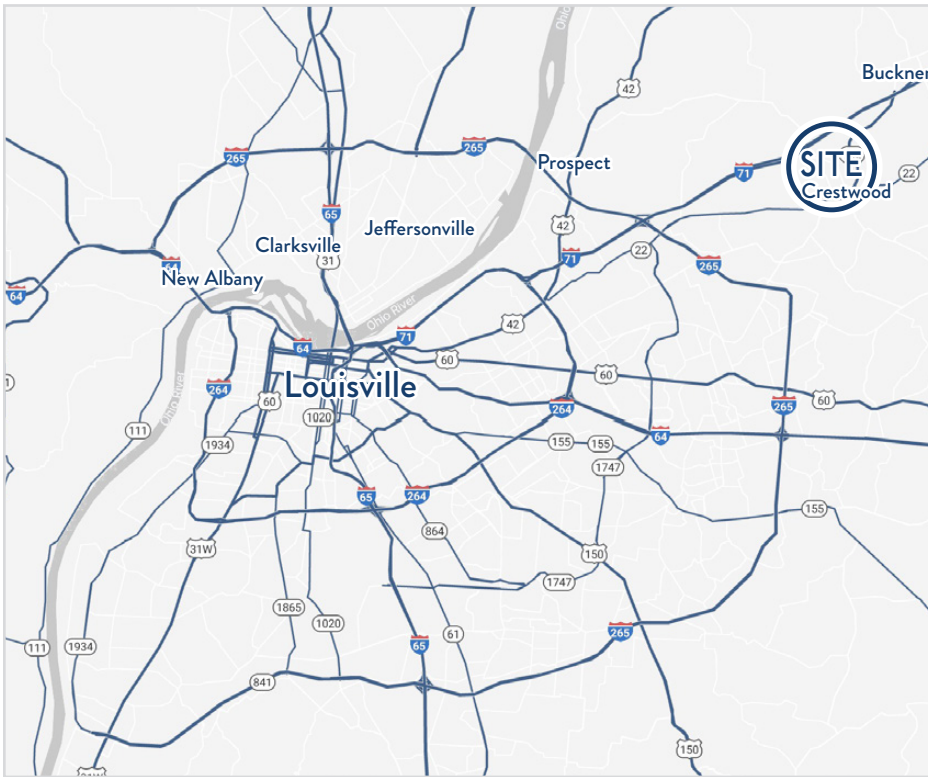
ARBOR RIDGE POINTE
6402 WESTWIND WAY, SUITE 6, CRESTWOOD, KY

HOGAN
REAL ESTATE

PROPERTY DESCRIPTION

ARBOR RIDGE POINTE

6402 WESTWIND WAY, SUITE 6, CRESTWOOD, KY



Features

- + The available space is currently occupied by Mobility Plus and includes a retail showroom, two offices, one restroom, a breakroom area, and two storage closets.
- + 15,360 SF professional center conveniently located on Veterans Memorial Parkway, across from Walmart
- + Desirable co-tenant mix of medical office, retail and a casual dining restaurant
- + Located in affluent Oldham County, one of the Louisville MSA's highest-income and fastest-growing suburban markets
- + Convenient access to I-71, connecting Crestwood to Louisville's Northeast submarket and regional employment centers



1,870 ± SF

CLASS B RETAIL SPACE

Available for Lease



Located at

SIGNALIZED INTERSECTION

of Veterans Memorial Pkwy
and Westwind Way

Demographics

	1 Mile	3 Miles	5 Miles
Population	4,201	20,580	70,741
Average Household Income	\$169,938	\$161,150	\$158,049

EXTERIOR PHOTOS

ARBOR RIDGE POINTE
6402 WESTWIND WAY, SUITE 6, CRESTWOOD, KY



INTERIOR PHOTOS

ARBOR RIDGE POINTE
6402 WESTWIND WAY, SUITE 6, CRESTWOOD, KY



INTERIOR PHOTOS

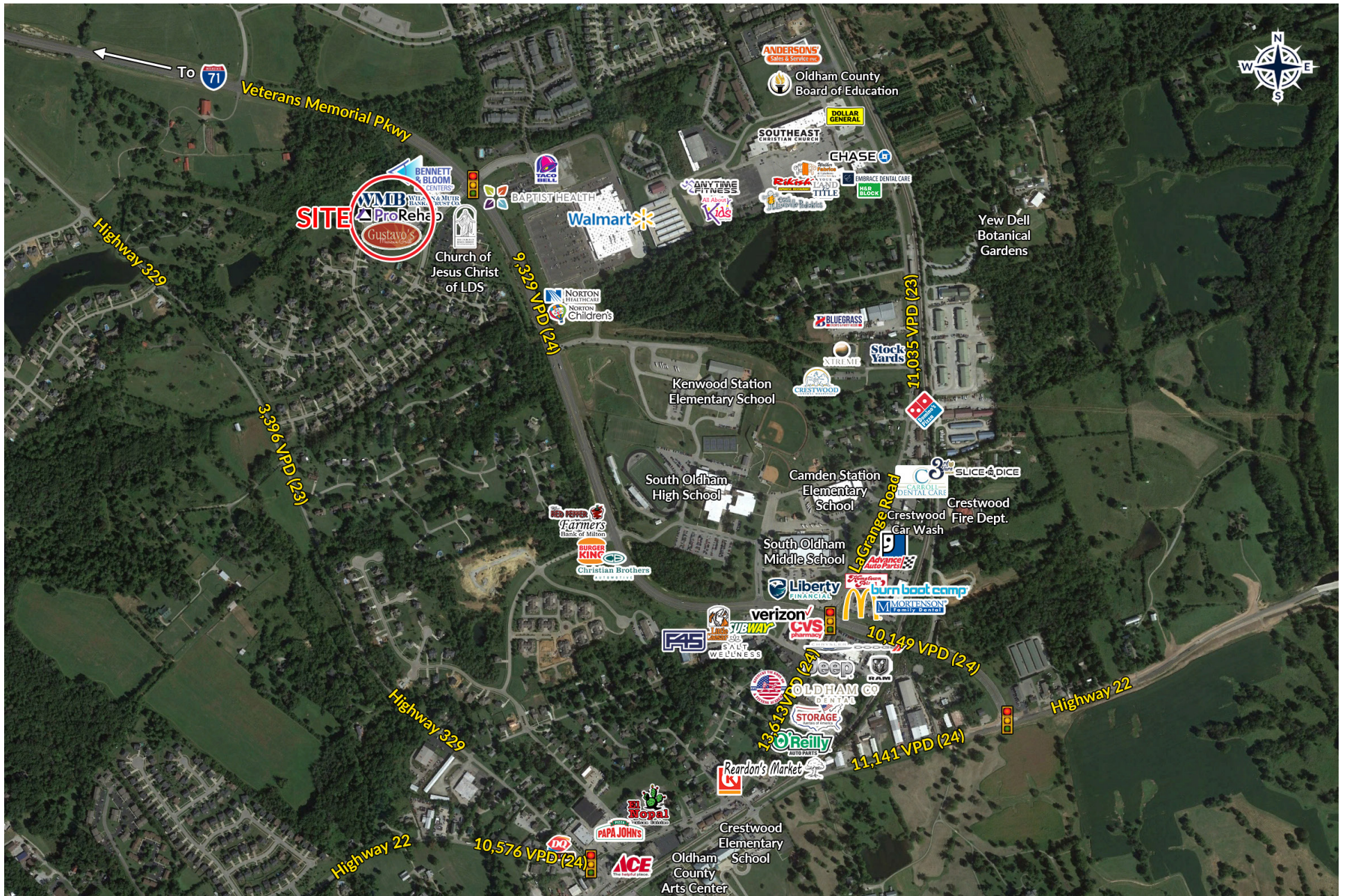
ARBOR RIDGE POINTE
6402 WESTWIND WAY, SUITE 6, CRESTWOOD, KY



TRADE AREA AERIAL

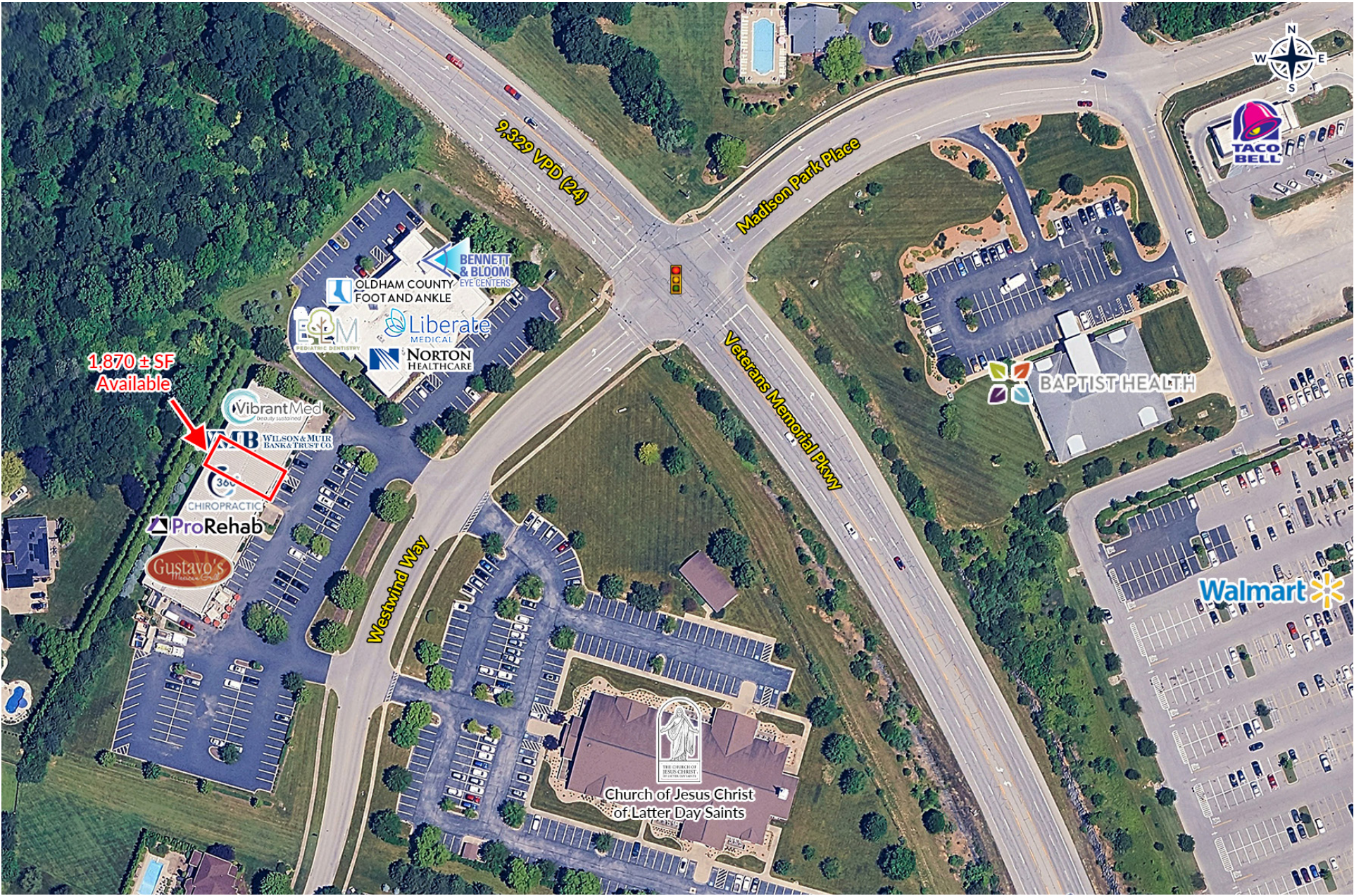
ARBOR RIDGE POINTE

6402 WESTWIND WAY, SUITE 6, CRESTWOOD, KY



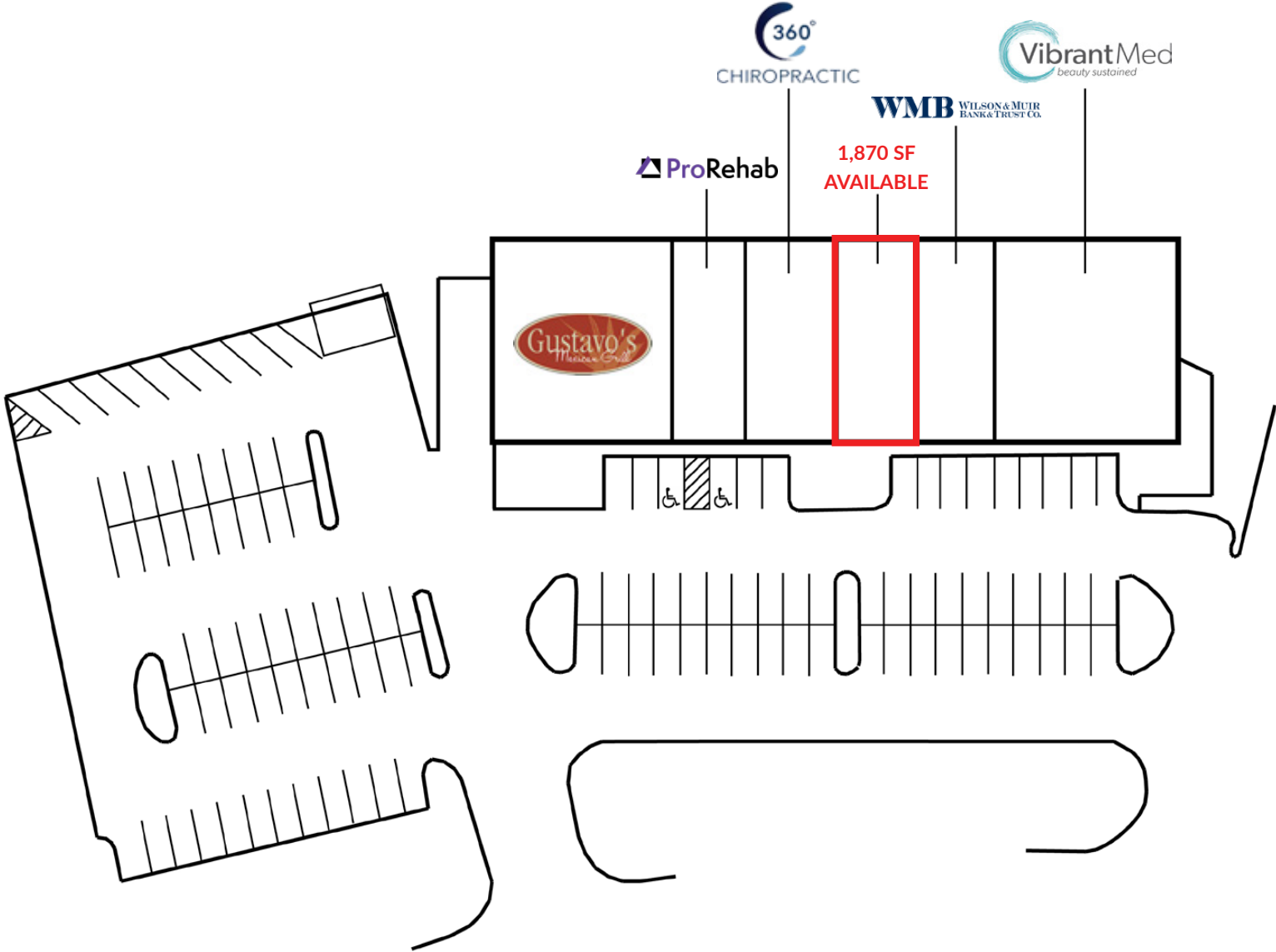
IMMEDIATE AREA AERIAL

ARBOR RIDGE POINTE
6402 WESTWIND WAY, SUITE 6, CRESTWOOD, KY



SITE PLAN

ARBOR RIDGE POINTE
6402 WESTWIND WAY, SUITE 6, CRESTWOOD, KY



HOGAN REAL ESTATE

PROPERTY CONTACT

+ **Ashley McCarty**

O: 502.271.5815

C: 502.387.8983

amccarty@hogandev.com