



**MOVE-IN READY
FOR LEASE – OFFICE SUITES**
MIRA VISTA OFFICE PARK
2360-2372 South Uecker Lane, Lewisville, TX



2nd GENERATION OFFICE SPACES AVAILABLE:

****MOVE-IN READY****

2364 S Uecker Lane

- Entire Bldg – 2,469 RSF
- Available NOW!

2368 S Uecker Lane

- Suite 200 – 1,400 RSF
- Available NOW!

2370 S Uecker Lane

- Suite 200 – 1,376 RSF
- Available NOW!

LEASE RATE:

Competitive Rates - See Broker for Pricing.

NEW CONSTRUCTION MEDICAL OFFICE SPACE AVAILABLE:

****NEW CONSTRUCTION WITH FLEXIBLE FINISHES AND PLUMBING OPTIONS TO ACCOMMODATE MEDICAL USE****

2360 S Uecker Lane

- Entire Bldg – 3,598 RSF
- ***BEST USE: Medical*** – construction includes plumbing leave-outs (see floor plan for locations)
- Available December 2026

LEASE RATE:

Competitive Rates - See Broker for Pricing.

FOR INFORMATION:

Diana Pergande: Diana@BridgeRealtyTexas.com

Phyllis Garcia: Phyllis@BridgeRealtyTexas.com

www.BridgeRealtyTexas.com | 972.899.1851

400 Parker Square, Suite 270H | Flower Mound, TX 75028

This information is believed to be accurate, but no representation or warranty, express or implied, as to its accuracy or completeness is made by any party. The presentation of this property is submitted subject to errors, omissions, change of price or prior sale or lease, or withdrawal without notice.



BUILDING SITE PLAN/LOCATION

MIRA VISTA OFFICE PARK

2360-2372 South Uecker Lane, Lewisville, TX

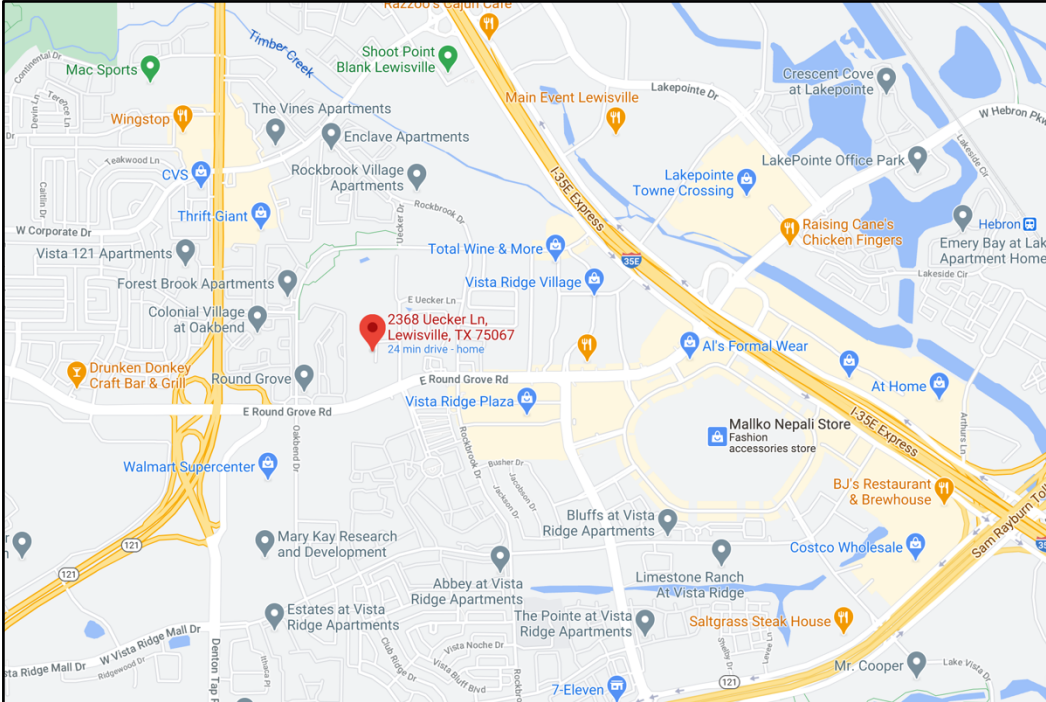


LOCATION:

Ideal location for professional & medical office tenants.

Move-in ready office space for lease in single-story buildings located in the Mira Vista professional office park 1,000 feet off FM 3040 (East Round Grove Road) between Business Highway 121 and Rockbrook Drive.

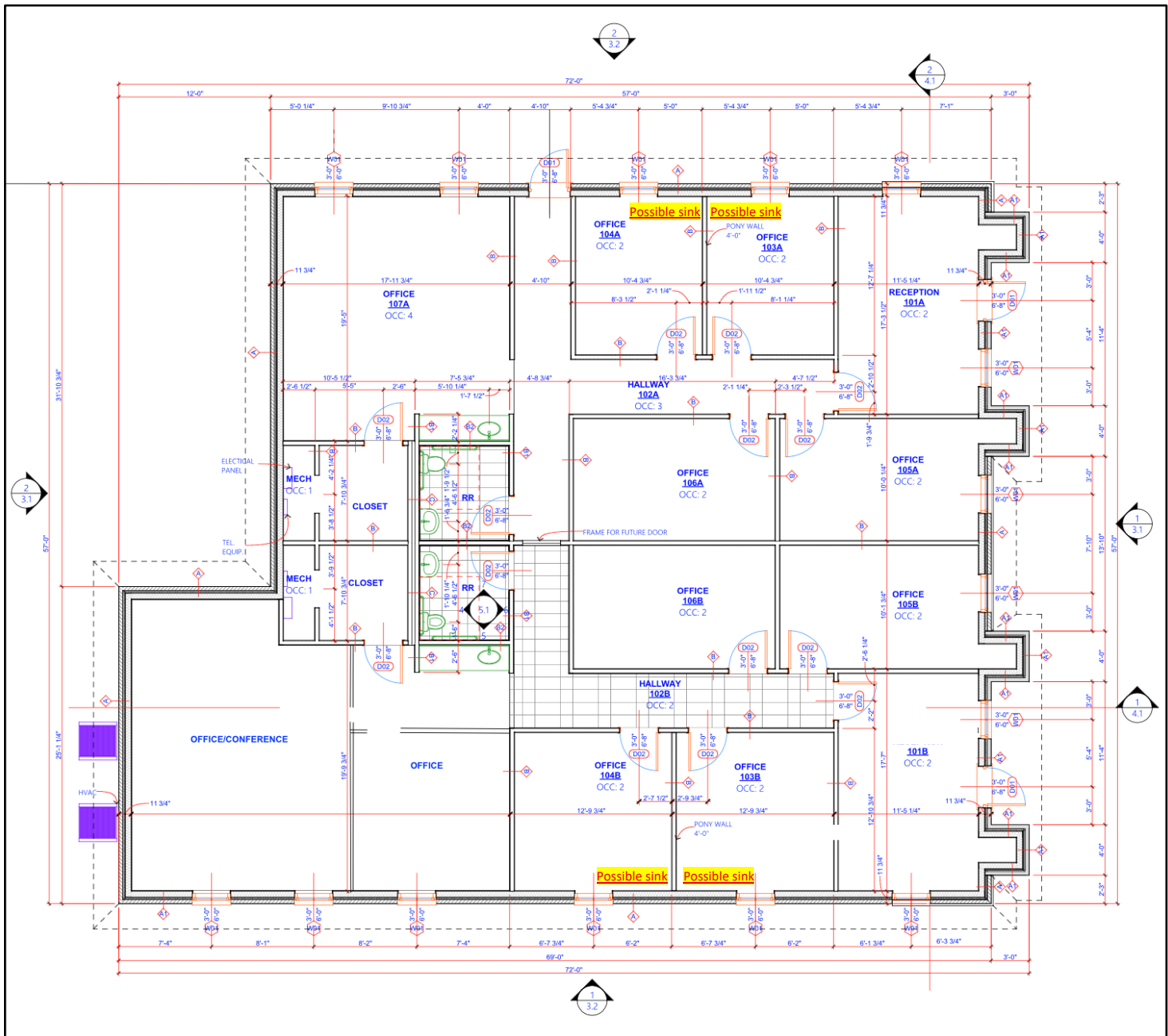
This office park has easy access to I-35 E, Sam Rayburn Tollway and all nearby retail and restaurant offerings.



2360 S. Uecker Lane, Lewisville, TX 75067

Entire Building – 3,598 RSF

MEDICAL OFFICE FOR LEASE

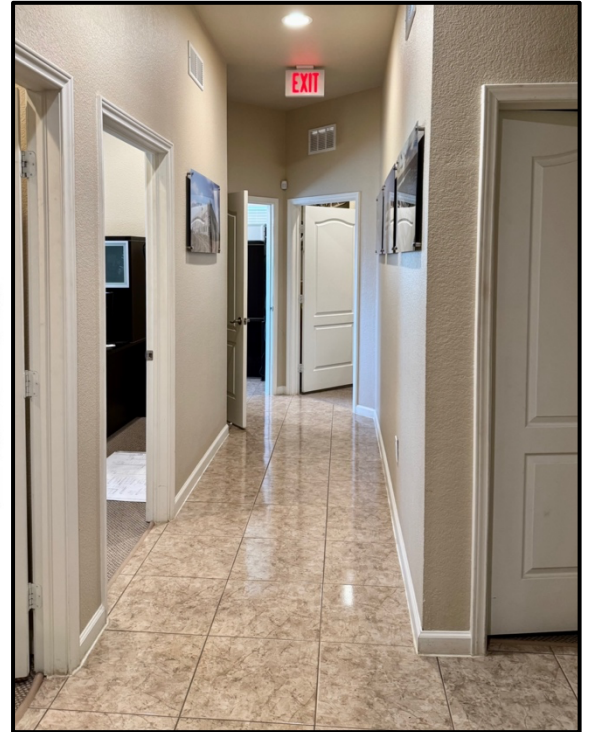
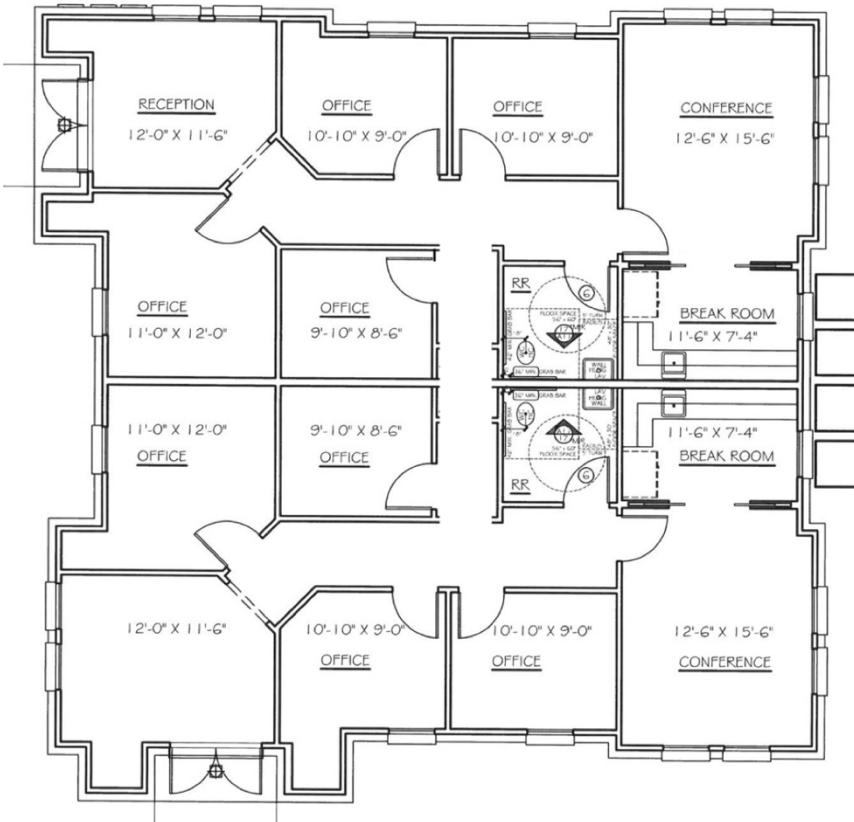




FLOOR PLAN

2364 South Uecker Lane, Suites A-B
Lewisville, TX

2364 S. Uecker Lane, Lewisville, TX 75067
Suites A-B (entire building) – 2,469 RSF

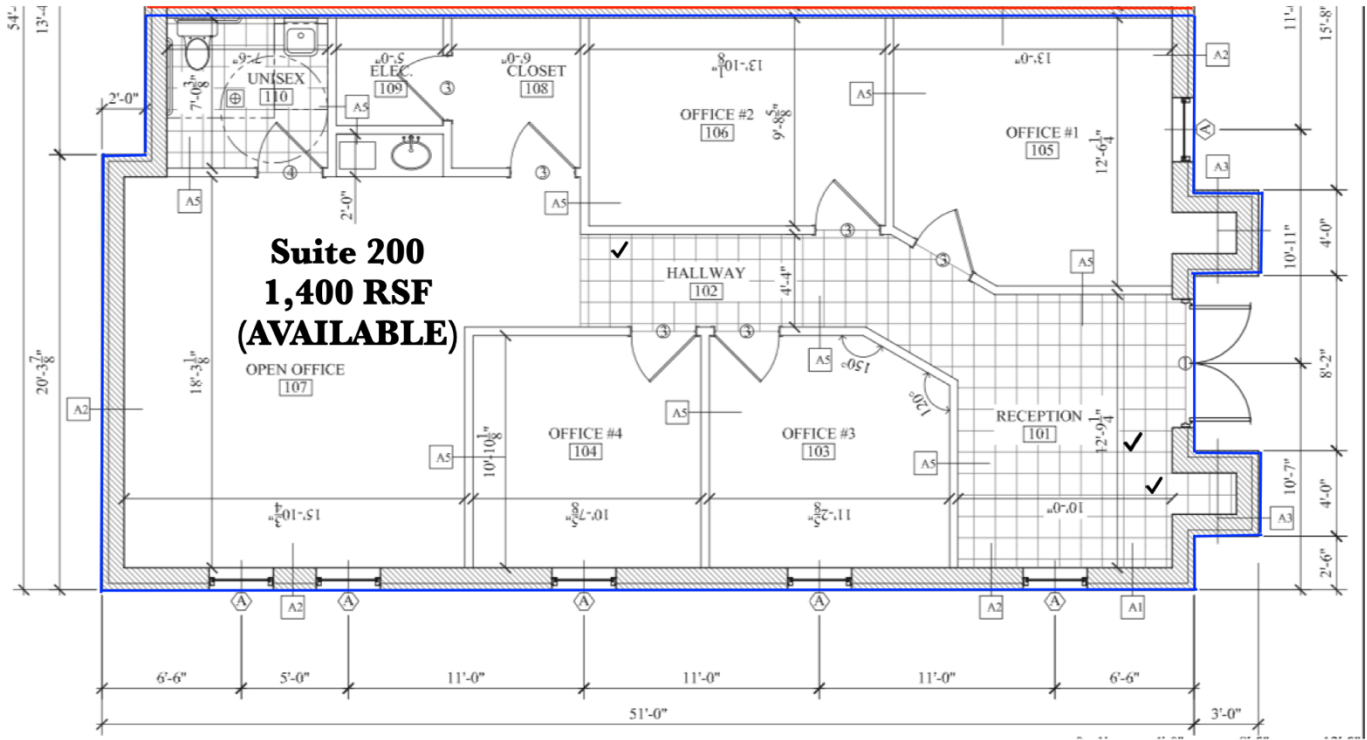




FLOOR PLAN

2368 South Uecker Lane, Suite 200
Lewisville, TX

2368 S. Uecker Lane, Lewisville, TX 75067
Suite 200 – 1,400 RSF





FLOOR PLAN

2370 South Uecker Lane, Suite 200
Lewisville, TX

2370 S. Uecker Lane, Lewisville, TX 75067
Suite 200 – 1,376 RSF

