

13250-13320 NORTHEND AVE.
OAK PARK, MICHIGAN

OFFICE FOR LEASE
10,902 Square Feet Available



**SIGNATURE
ASSOCIATES**
KNOW SIGNATURE | KNOW RESULTS



PROPERTY FEATURES

- 10,902 square feet available
- Move-in ready open office with large kitchen
- Beautiful reception with a lot of light
- Private offices perfect for creative industry use
- Plenty of parking
- Lease Rate: \$9.95/sq. ft. NNN



For more information, please contact:

DAN MORROW
(248) 799 3144
dmorrow@signatureassociates.com

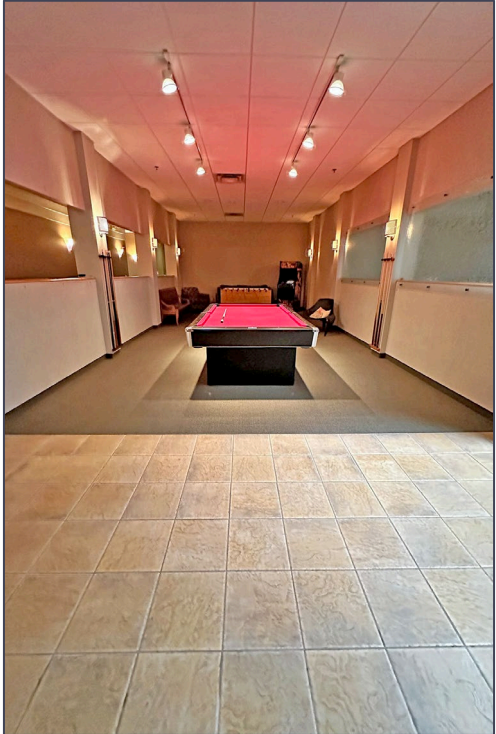
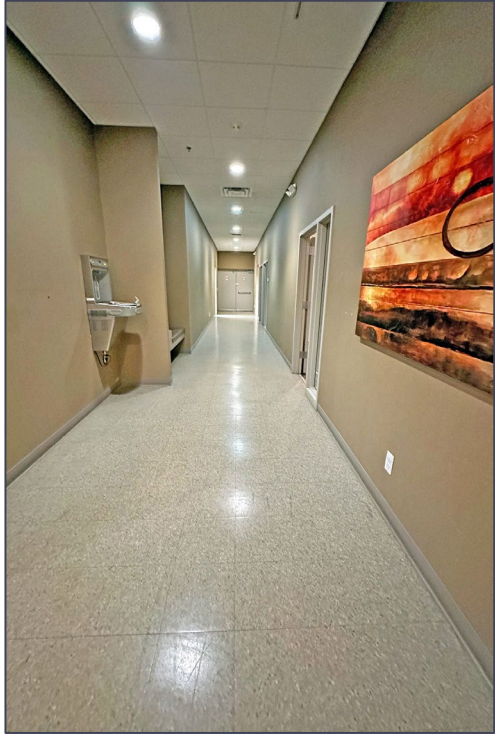
SIGNATURE ASSOCIATES
One Towne Square, Suite 1200
Southfield, MI 48076
www.signatureassociates.com

13250-13320 Northend Avenue – Oak Park, Michigan

Office For Lease

10,902
Square Feet
AVAILABLE

Interior Photos



For more information, please contact:

DAN MORROW
(248) 799 3144
dmorrow@signatureassociates.com

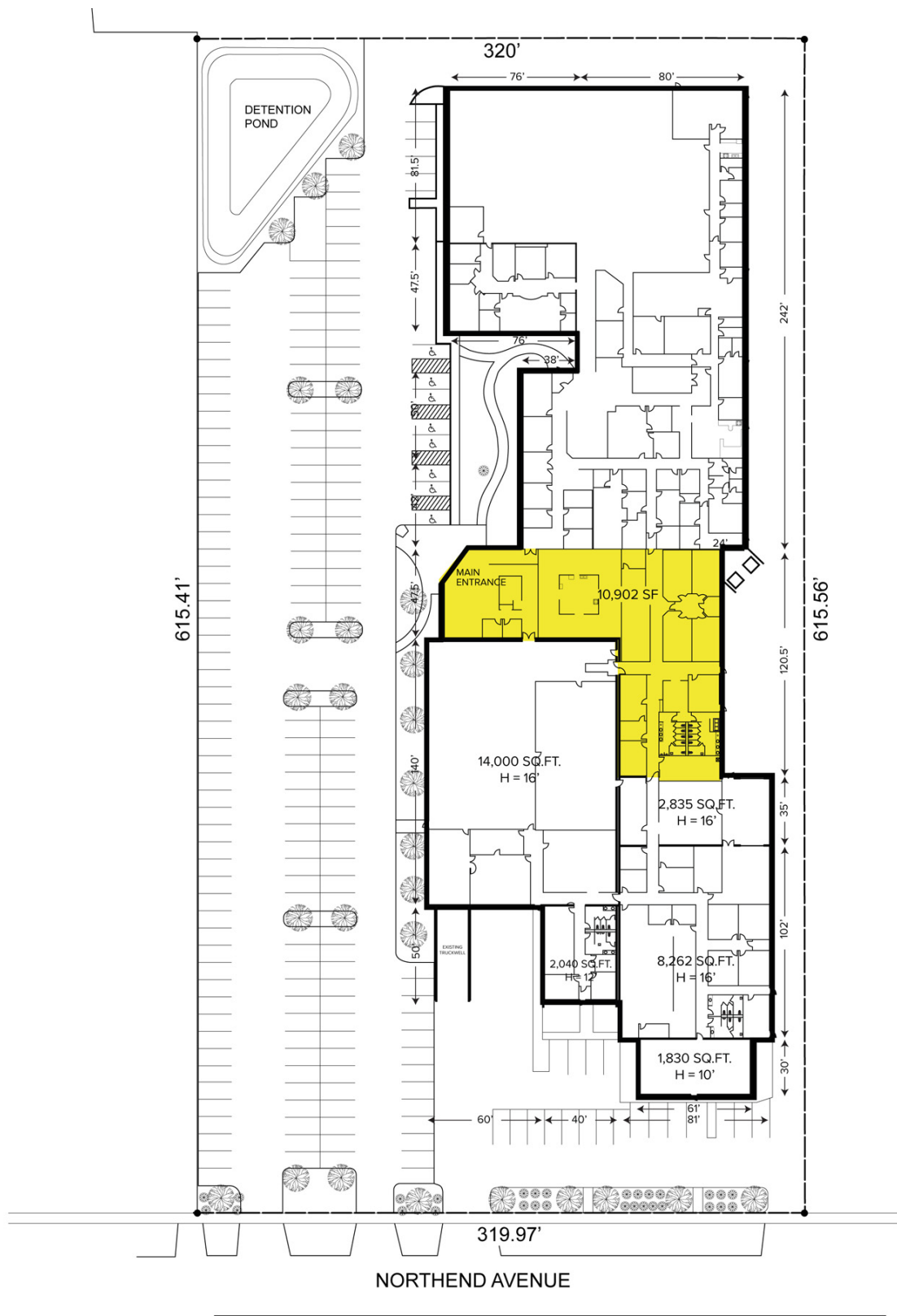
SIGNATURE ASSOCIATES
One Towne Square, Suite 1200
Southfield, MI 48076
www.signatureassociates.com

13250-13320 Northend Avenue – Oak Park, Michigan

Office For Lease

10,902
Square Feet
AVAILABLE

Site Plan



For more information, please contact:

DAN MORROW
(248) 799 3144
dmorrow@signatureassociates.com

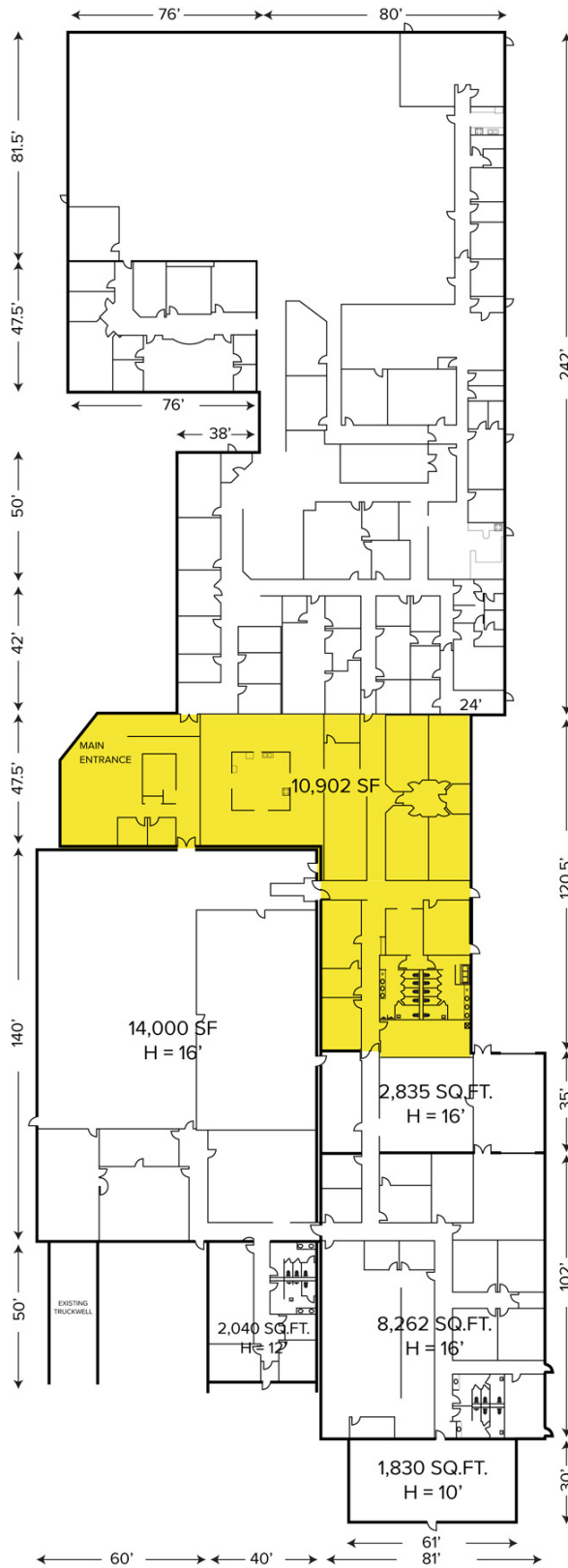
SIGNATURE ASSOCIATES
One Towne Square, Suite 1200
Southfield, MI 48076
www.signatureassociates.com

13250-13320 Northend Avenue – Oak Park, Michigan

Office For Lease

10,902
Square Feet
AVAILABLE

Floor Plan



For more information, please contact:

DAN MORROW
(248) 799 3144
dmorrow@signatureassociates.com

SIGNATURE ASSOCIATES
One Towne Square, Suite 1200
Southfield, MI 48076
www.signatureassociates.com

13250-13320 Northend Avenue – Oak Park, Michigan

Office For Lease

10,902
Square Feet
AVAILABLE

Aerial



For more information, please contact:

DAN MORROW
(248) 799 3144
dmorrow@signatureassociates.com

SIGNATURE ASSOCIATES
One Towne Square, Suite 1200
Southfield, MI 48076
www.signatureassociates.com