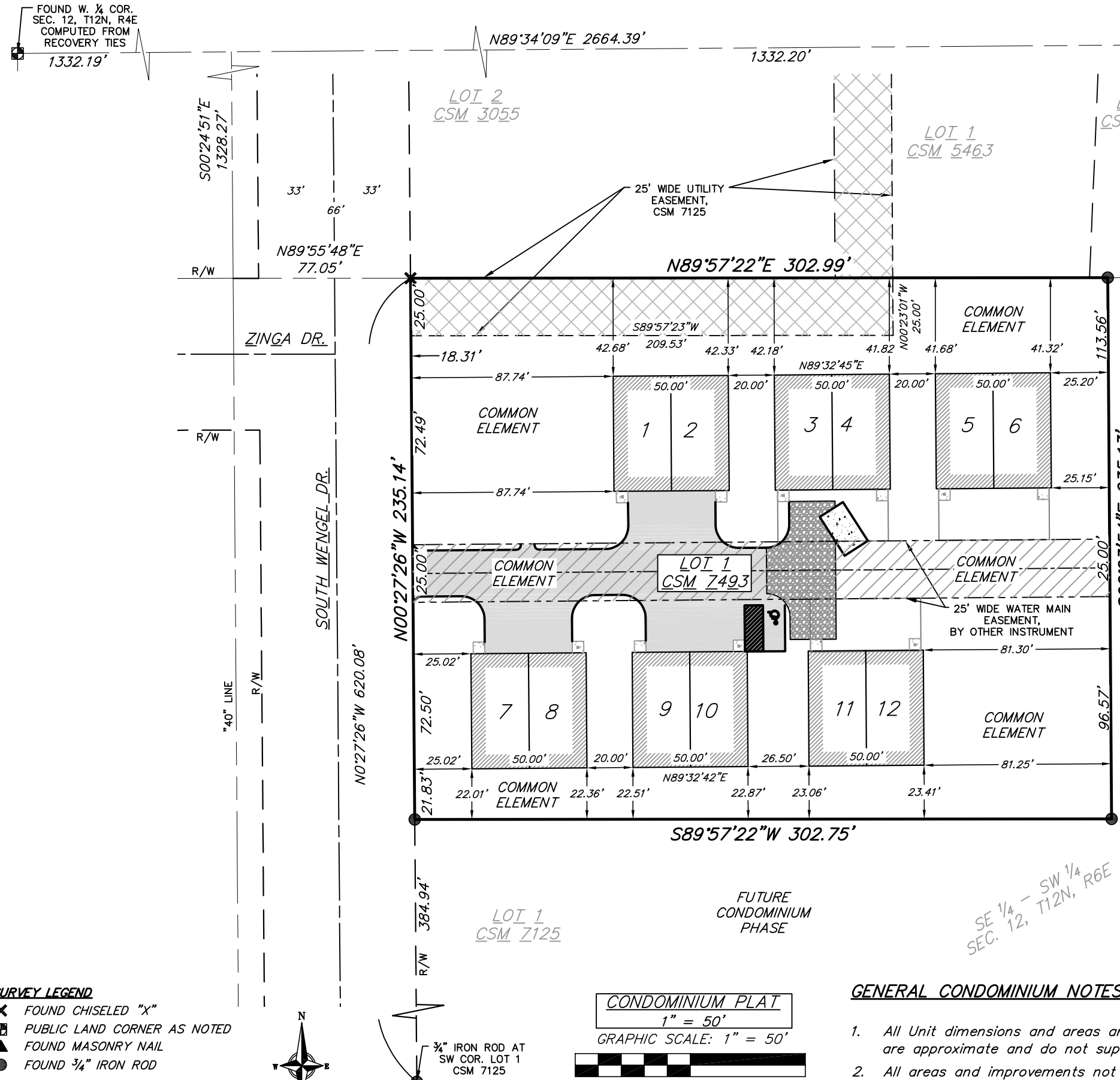


SHOP SPACE WISCONSIN, CONDOMINIUM

LOT 1 OF SAUK COUNTY CERTIFIED SURVEY MAP NO. 7493 RECORDED AS DOCUMENT NO. 1265612, VOLUME 49 OF CERTIFIED SURVEYS, PAGES 7493 - 7493-A IN THE OFFICE OF THE SAUK COUNTY REGISTER OF DEEDS AND LOCATED IN THE SOUTHEAST QUARTER OF THE SOUTHWEST QUARTER OF SECTION 12, T12N, R4E, CITY OF REEDSBURG, SAUK COUNTY, WISCONSIN

© Vierbicher Associates, Inc.

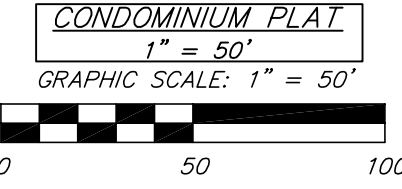
R:\Coyler, Devin\240016 - Reedsburg Business Park Condominiums\CADD\240016 - Condominium Plat.dwg by: mlbn 28 Aug 2024 - 8:05a



- SURVEY LEGEND**
- ✕ FOUND CHISELED "X"
 - ⊠ PUBLIC LAND CORNER AS NOTED
 - ▲ FOUND MASONRY NAIL
 - FOUND 3/4" IRON ROD

DISTANCES ARE MEASURED TO THE NEAREST HUNDREDTH OF A FOOT

BEARINGS ARE REFERENCED TO THE WISCONSIN COUNTY COORDINATE SYSTEM, THE NORTH LINE OF THE SOUTHWEST QUARTER OF SECTION 12, T12N R4E BEARS N89°34'09"E



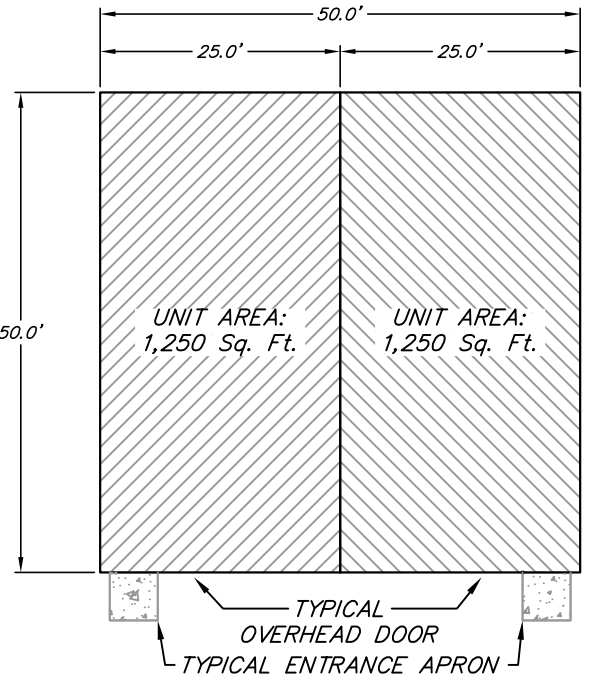
GENERAL CONDOMINIUM NOTES:

1. All Unit dimensions and areas are based upon architectural floor plans provided by the architect. Unit dimensions and areas are approximate and do not supersede Unit Boundaries as set forth in the Condominium Declaration.
2. All areas and improvements not shown or defined as part of Units are Common Elements. See the Condominium Declaration for additional information regarding Common Elements. There are no Limited Common Elements defined within this Condominium Plat.
3. This Condominium Plat is subject to any and all easements, both recorded and unrecorded.
4. There are no buildings present on this Condominium Plat at the time that this plat was drafted. As a result there may be minor differences in the exact position of unit buildings. The final position of the buildings is absolutely determinant of the location of the unit boundaries.

SURVEYOR'S CERTIFICATE

I, Marc A. Londo, Professional Land Surveyor No. S-2870, hereby certify that in full compliance with the provisions of Chapter 703 of the Wisconsin Statutes, and the City of Reedsburg's Subdivision Regulations regarding condominium plat review, I have surveyed and mapped the above described lands in accordance with the information furnished; I further certify that this condominium plat correctly represents the condominium described and to be constructed and the identification and location of the units and common elements can be determined from the plat and are intended to replicate the units and common elements as set forth by the condominium.

Marc A. Londo, P.L.S. No. S-2696 Date
 Vierbicher Associates, Inc.
 201 East Main Street, Suite 100
 Reedsburg, WI 53959
 (506) 524-6468



CONDOMINIUM UNIT DETAIL
 1" = 20'
 GRAPHIC SCALE: 1" = 20'



CERTIFICATE OF REGISTER OF DEEDS

Received for recording this _____ day of _____, 20____, at _____ o'clock ____M. and recorded in Volume _____ of Condominium Plats on Pages _____, as Document Number _____

Brent Bailey,
 Sauk County Register of Deeds

SURVEYED FOR:
 Devin Coyle
 Shop Space Wisconsin, LLC
 1124 Quinn Drive
 Waunakee, WI 53597

SURVEYED BY:
 Vierbicher Associates, Inc.
 201 E Main St
 Suite 100
 Reedsburg, WI 53959
 (608) 524-6468

Job #: 240016
 Date: 8/28/2024
 Rev:
 Drafted By: mlbn
 Checked By: sdls
 Sheet 1 of 1

