

1,680 +/- SF Office / Warehouse Unit



Flex Space On Highway 170

63 Schinger Avenue

Ridgeland, South Carolina 29936

Property Highlights

- Office / Warehouse space for lease in Okatie on Highway 170 at Riverwalk Business Park
- Unit 101 layout consists of; 2 offices, break room and large warehouse
- Other tenant's include; Diamond Transportation, Palmetto Performance, Rainbow Int't Restoration, KDS Kitchen Design, Nandina Engineering and others

Offering Summary

Unit 101 SF:	1,680 +/- SF
Unit 101 Base Rent:	\$21.50 PSF
Annual Increases:	3%
2025 NNN Budget:	\$6.25 PSF

For More Information

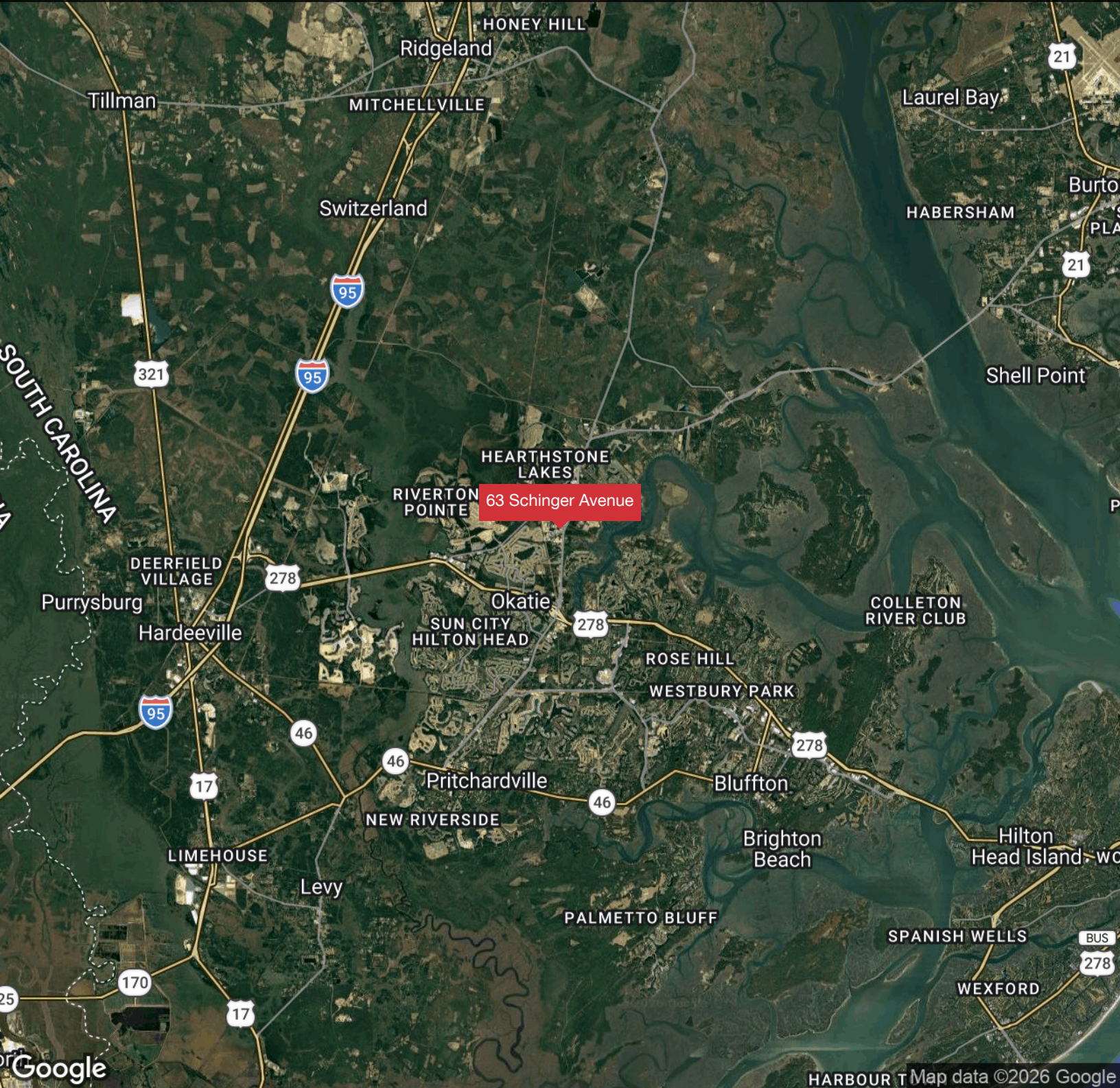
Baker Wilkins

Broker In Charge

O: 843 837 4460 x2

baker@naicarolinacharter.com

1,680 +/- SF Office / Warehouse Unit



We obtained the information above from sources we believe to be reliable. However, we have not verified its accuracy and make no guarantee, warranty or representation about it. It is submitted subject to the possibility of errors, omissions, change of price, rental or other conditions, prior sale, lease or financing, or withdrawal without notice. We include projections, opinions, assumptions or estimates for example only, and they may not represent current or future performance of the property. You and your tax and legal advisors should conduct your own investigation of the property and transaction.

1227 May River Road, Suite 100
Bluffton, SC 29910
843 837 4460 tel
naicarolinacharter.com

1,680 +/- SF Office / Warehouse Unit



We obtained the information above from sources we believe to be reliable. However, we have not verified its accuracy and make no guarantee, warranty or representation about it. It is submitted subject to the possibility of errors, omissions, change of price, rental or other conditions, prior sale, lease or financing, or withdrawal without notice. We include projections, opinions, assumptions or estimates for example only, and they may not represent current or future performance of the property. You and your tax and legal advisors should conduct your own investigation of the property and transaction.

1227 May River Road, Suite 100
Bluffton, SC 29910
843 837 4460 tel
naicarolinacharter.com

1,680 +/- SF Office / Warehouse Unit



Google

We obtained the information above from sources we believe to be reliable. However, we have not verified its accuracy and make no guarantee, warranty or representation about it. It is submitted subject to the possibility of errors, omissions, change of price, rental or other conditions, prior sale, lease or financing, or withdrawal without notice. We include projections, opinions, assumptions or estimates for example only, and they may not represent current or future performance of the property. You and your tax and legal advisors should conduct your own investigation of the property and transaction.

1227 May River Road, Suite 100
Bluffton, SC 29910
843 837 4460 tel
naicarolinacharter.com

1,680 +/- SF Office / Warehouse Unit



We obtained the information above from sources we believe to be reliable. However, we have not verified its accuracy and make no guarantee, warranty or representation about it. It is submitted subject to the possibility of errors, omissions, change of price, rental or other conditions, prior sale, lease or financing, or withdrawal without notice. We include projections, opinions, assumptions or estimates for example only, and they may not represent current or future performance of the property. You and your tax and legal advisors should conduct your own investigation of the property and transaction.

1227 May River Road, Suite 100
Bluffton, SC 29910
843 837 4460 tel
naicarolinacharter.com

1,680 SF | Flex Space

