

115 LIBERTY SQUARE

SQUARE FOOTAGE: 3,980

FRONT:
1 HR. C.M.U. WALL W/
2 1/2" FURRING

REAR/SIDE WALLS:
PARTIAN WALLS

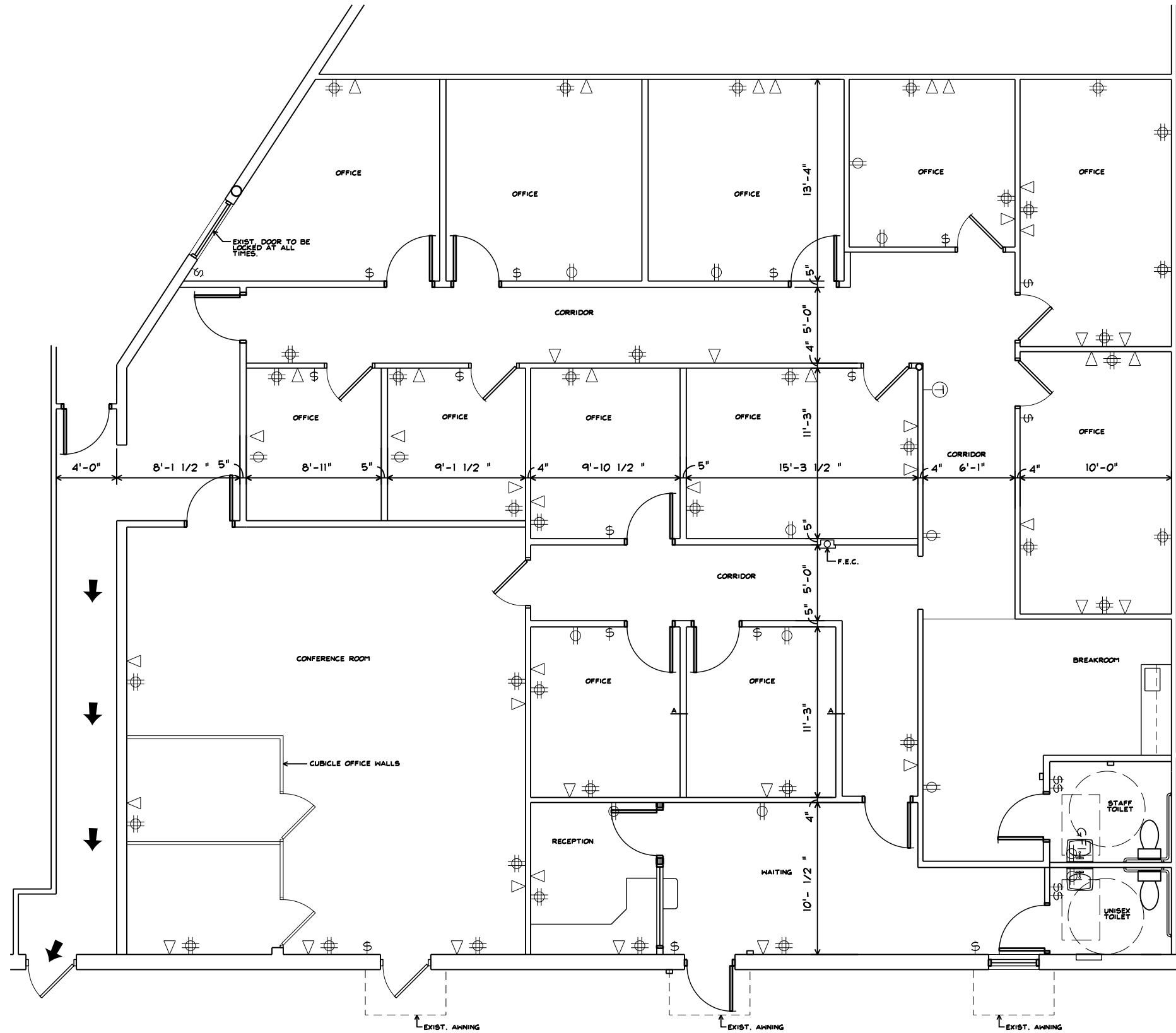
DIVIDING WALL:
1 HR. C.M.U. WALL W/
GYP. BD.

OFFICES:
QUAD DUPLEXES
DUPLEXES
TELE/DATA
(MISC. LOCATIONS)
2X4 LIGHTING
2X4 CEILING GRID

* TOILETS: (A.D.A.)
2X2 LIGHTING
2X2 CEILING GRID
EXHAUST FAN
LAVATORY
GRAB BARS

ELECTRICAL:
200 AMP 240/120V - 3PH - 4W
CUTLER-HAMMER DISTRIBUTION PANEL
42 BREAKER SPACES
27 BREAKERS USED

LEGEND	
	SUPPLY / RETURN
	LIGHT FIXTURE
	FLORESCENT & TRACK LIGHTING
	SPRINKLER HEAD
	DUPLEX OUTLET
	EMPTY UTILITY BOX
	QUAD OUTLET
	DATA OUTLET
	EXIT SIGN
	THERMOSTAT
	CAMERA
	CABLE T.V. OUTLET
	LIGHT SWITCH



FLOOR PLAN SQUARE FOOTAGE: 3,980

GENERAL NOTE:
DIMENSIONS SHOWN TO FACE OF WALL.
SQUARE FOOTAGE CALCULATED BY BOMA REGULATIONS,
MEASURED TO CENTER OF DEMISING WALLS, FACE OF
GLASS ON STOREFRONTS AND FACE OF EXTERIOR
WALLS ON REAR OF SPACE.