



582 & 590 PIEDMONT AVENUE ATLANTA, GA 30305

FOR LEASE
4,728± SF Building

STEVE RATCHFORD, SIOR, CCIM
Senior Vice President
404.942.2003
sratchford@kingindustrial.com

BILL JOHNSTON, SIOR
Senior Vice President
404.863.0254
bjohnston@kingindustrial.com

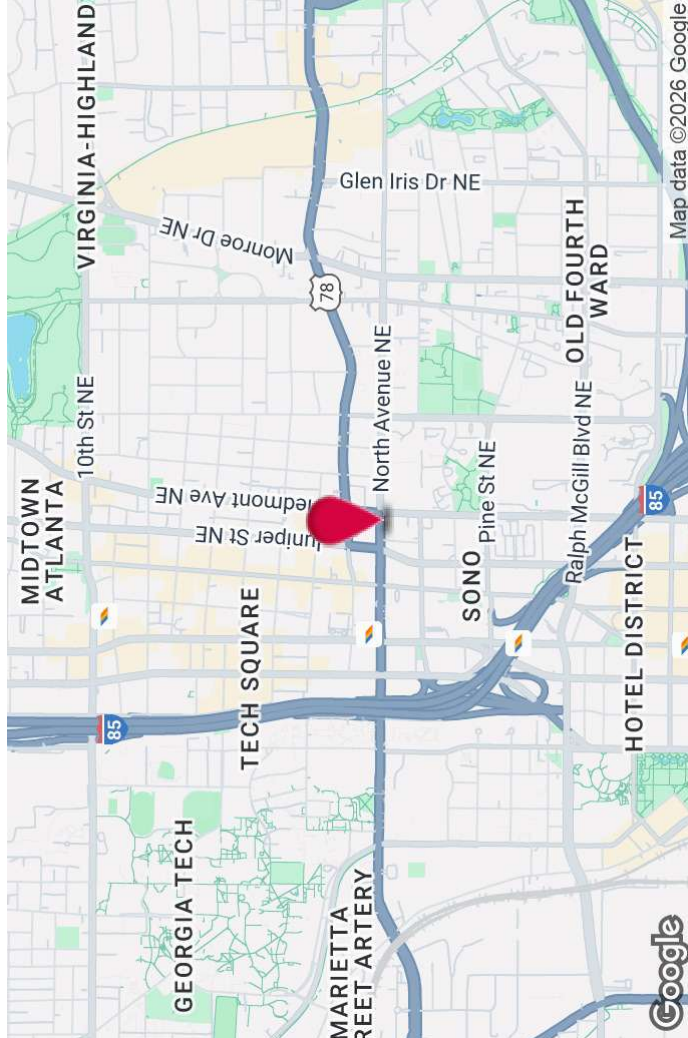
KING Industrial
Realty, Inc.
Industrial • Commercial • Investment
404.942.2000 | kingindustrial.com

FOR LEASE
4,728± SF



PROPERTY HIGHLIGHTS

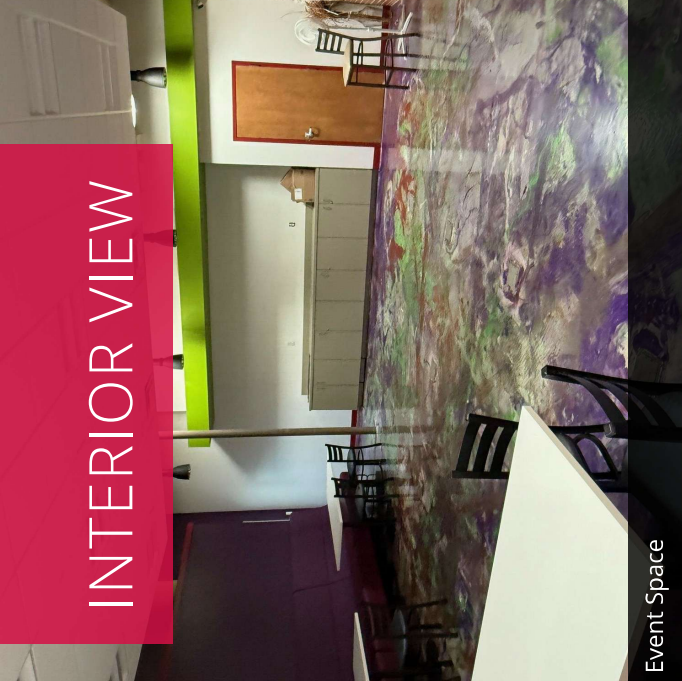
- 2,775± SF Office Space
- 1 Drive-In Door
- 100% HVAC
- Zoned C-4
- Fenced Parking
- Adjacent Parking Lot Included
- Approximately 36 Car Parking Spaces



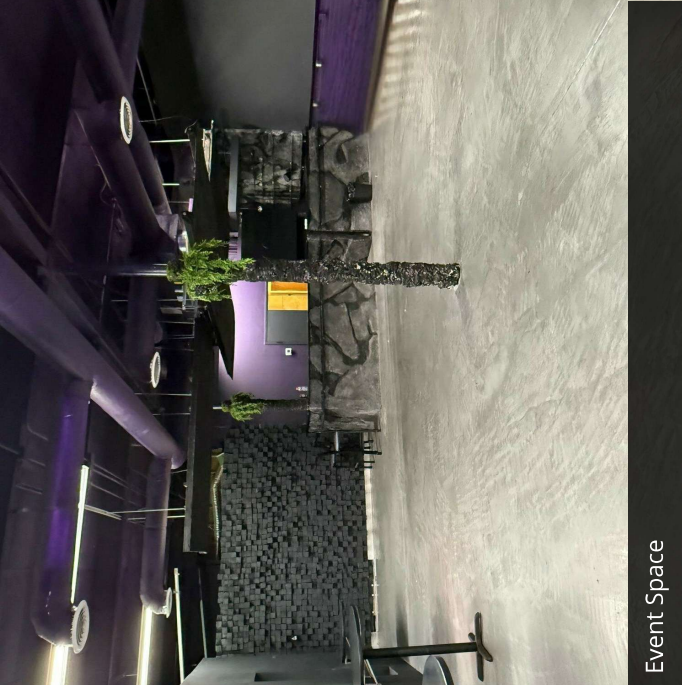
STEVE RATCHFORD, SIOR, CCIM
Senior Vice President
404.942.2003
sratchford@kingindustrial.com

BILL JOHNSTON, SIOR
Senior Vice President
404.863.0254
bjohnston@kingindustrial.com

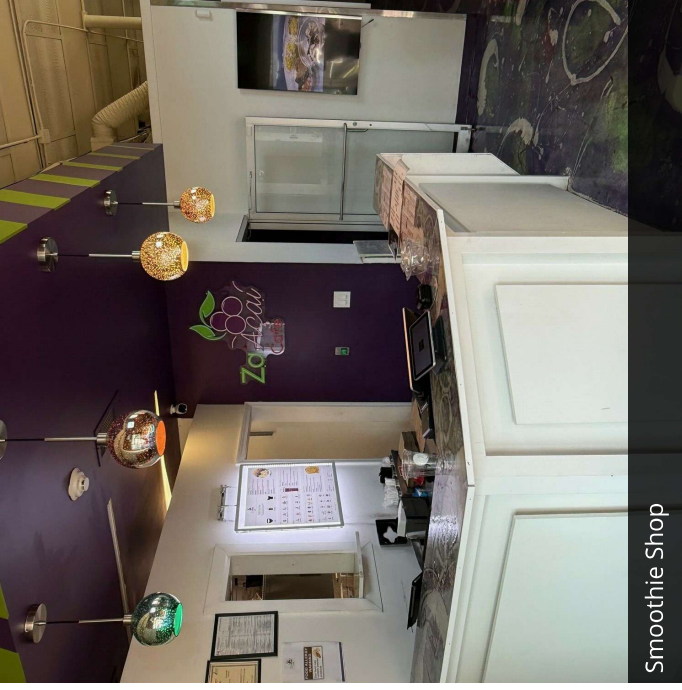
INTERIOR VIEW



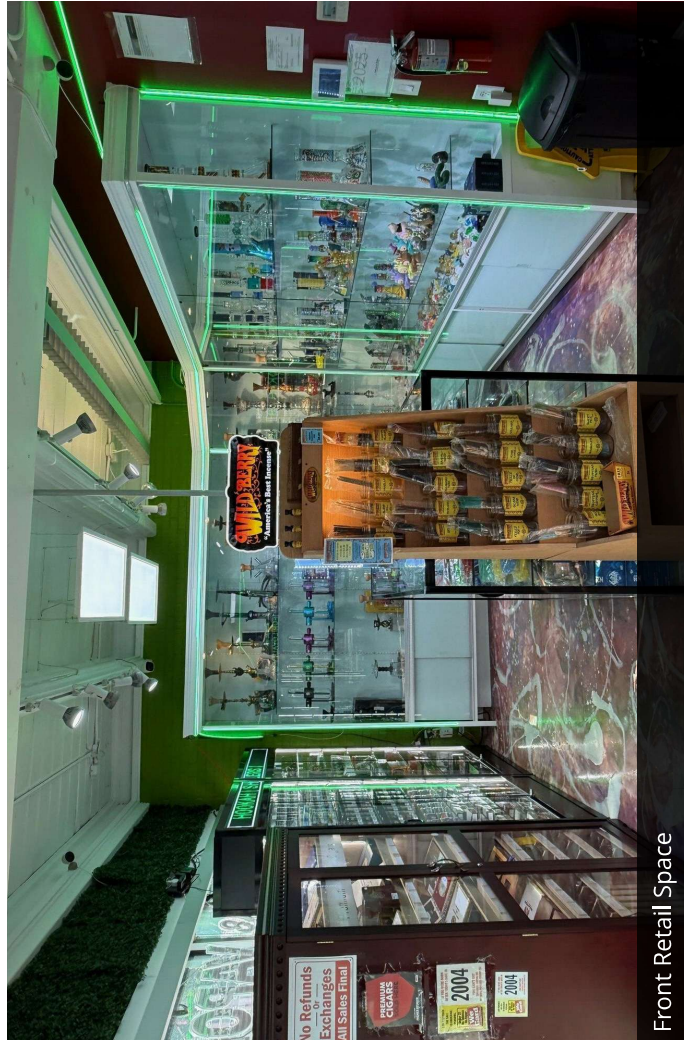
Event Space



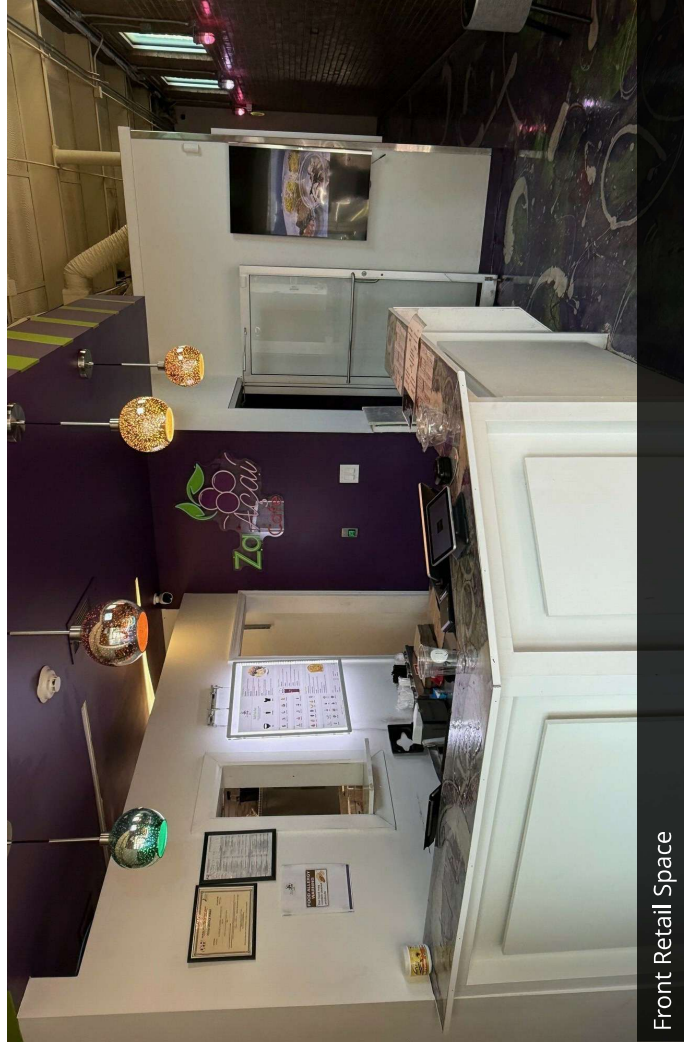
Event Space



Smoothie Shop



Front Retail Space



Front Retail Space

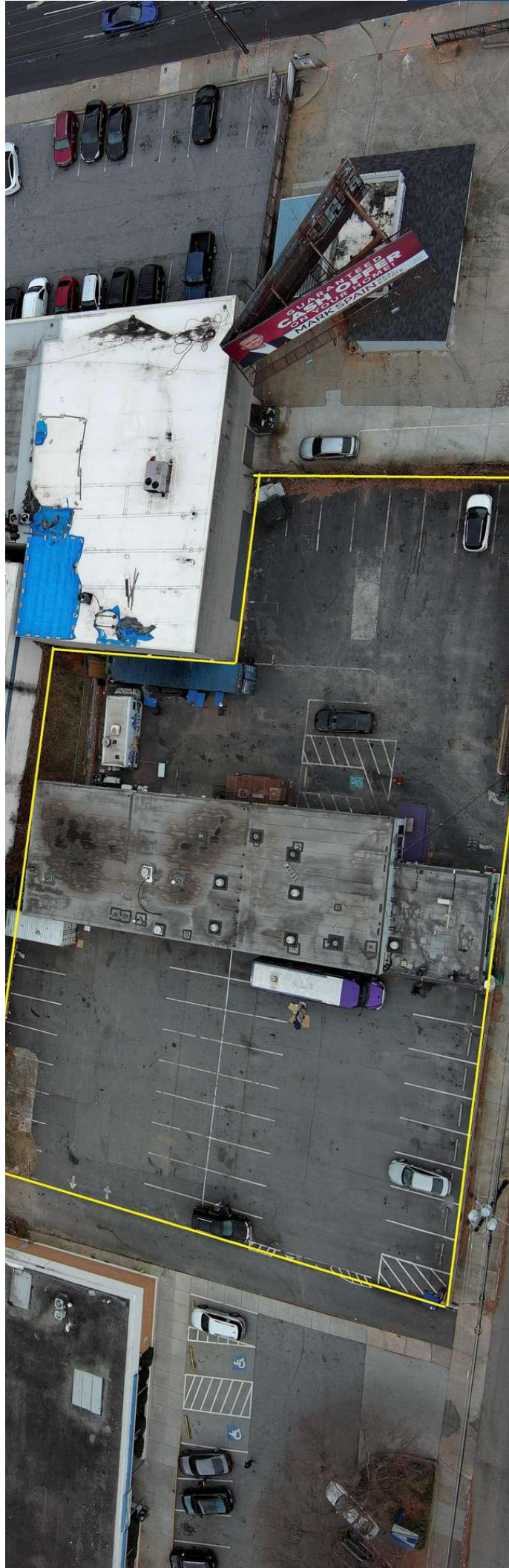
STEVE RATCHFORD, SIOR, CCIM
 Senior Vice President
 404.942.2003
 sratchford@kingindustrial.com

BILL JOHNSTON, SIOR
 Senior Vice President
 404.863.0254
 bjohnston@kingindustrial.com

King Industrial Realty, Inc.
 CORFAC INTERNATIONAL
 Industrial • Commercial • Investment
 404.942.2000 | kingindustrial.com

Every effort has been made to provide accurate information, but no liability is assumed for errors or omissions.

AERIAL VIEW



STEVE RATCHFORD, SIOR, CCIM
Senior Vice President
404.942.2003
sratchford@kingindustrial.com

BILL JOHNSTON, SIOR
Senior Vice President
404.863.0254
bjohnston@kingindustrial.com

King Industrial Realty, Inc.
CORFAC INTERNATIONAL
Industrial • Commercial • Investment
404.942.2000 | kingindustrial.com

Every effort has been made to provide accurate information, but no liability is assumed for errors or omissions.

ADJACENT
BUSINESSES

Gerber Collision & Glass

Fast Signs

Multi Tenant Retail

US Post Office

SUBJECT PROPERTY
590 Piedmont Ave

Emission Testing
Window Tinting

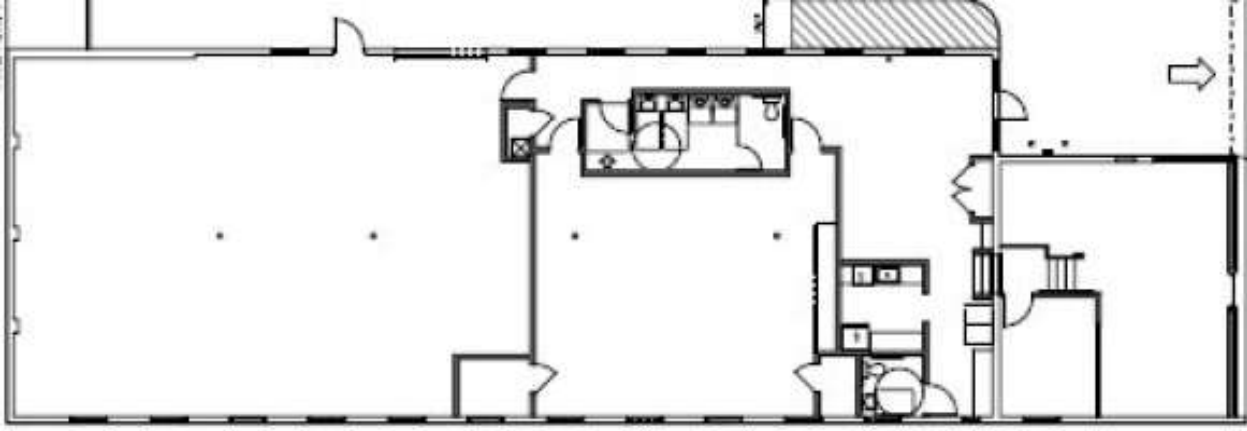
STEVE RATCHFORD, SIOR, CCIM
Senior Vice President
404.942.2003
sratchford@kingindustrial.com

BILL JOHNSTON, SIOR
Senior Vice President
404.863.0254
bjohnston@kingindustrial.com



CORFAC
INTERNATIONAL
Industrial • Commercial • Investment
404.942.2000 | kingindustrial.com

FLOOR PLAN



STEVE RATCHFORD, SIOR, CCIM
Senior Vice President
404.942.2003
sratchford@kingindustrial.com

BILL JOHNSTON, SIOR
Senior Vice President
404.863.0254
bjohnston@kingindustrial.com

Every effort has been made to provide accurate information, but no liability is assumed for errors or omissions.



Map data ©2026 Google Imagery ©2026 Airbus, Maxar Technologies

RETAILER MAP

All Seasons Emissions

FASTSIGNS
Make Your Statement

gerber
COLLISION & GLASS

ATLANTA
UNIVERSITY OF THE SALES

UNITED STATES POSTAL SERVICE

STEVE RATCHFORD, SIOR, CCIM
Senior Vice President
404.942.2003
sratchford@kingindustrial.com

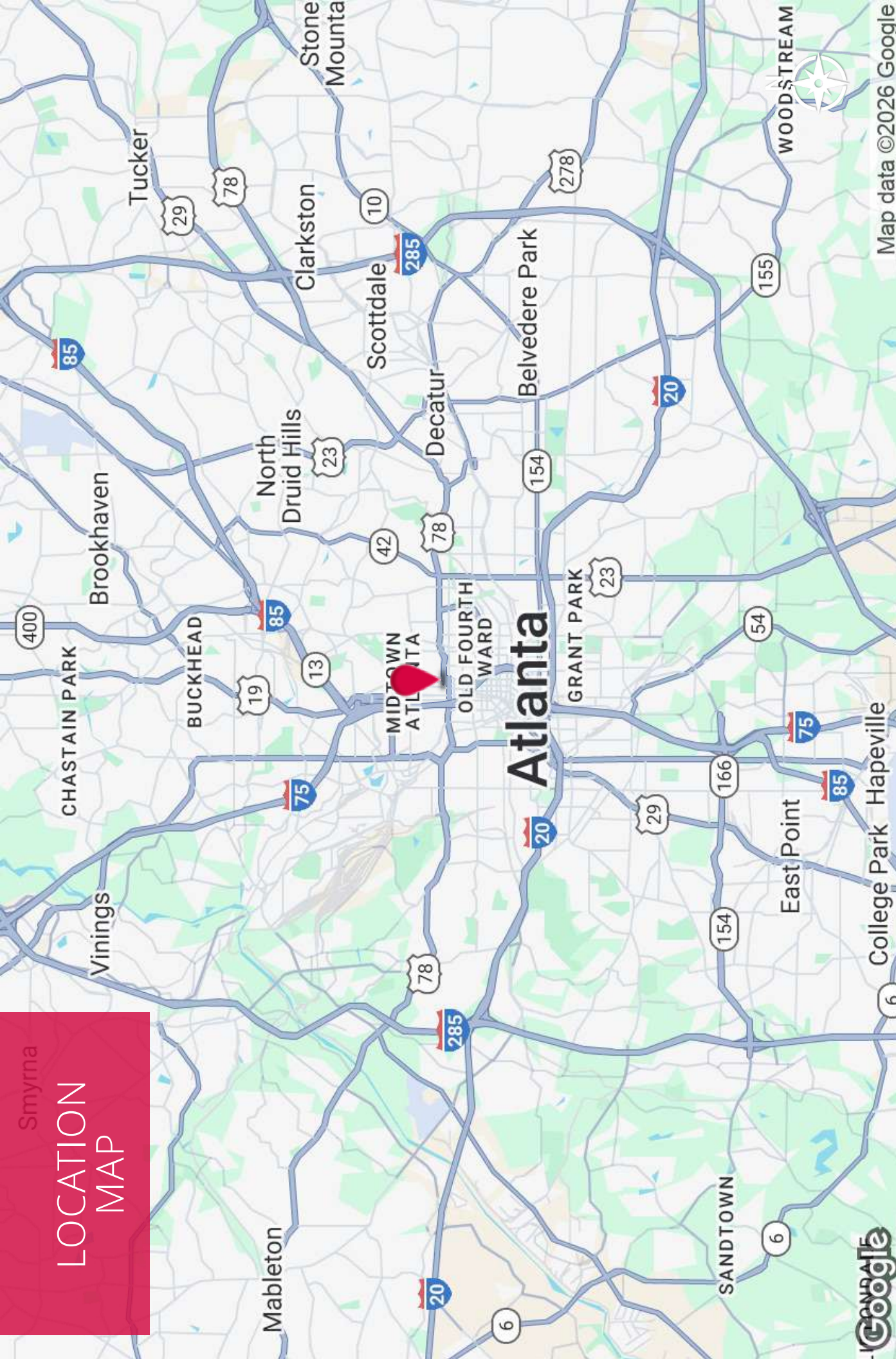
BILL JOHNSTON, SIOR
Senior Vice President
404.863.0254
bjohnston@kingindustrial.com

King
Industrial Realty, Inc.
CORFAC
INTERNATIONAL
Industrial • Commercial • Investment
404.942.2000 | kingindustrial.com

Every effort has been made to provide accurate information, but no liability is assumed for errors or omissions.

Smyrna

LOCATION MAP



Map data ©2026 Google

STEVE RATCHFORD, SIOR, CCIM
Senior Vice President
404.942.2003
sratchford@kingindustrial.com

BILL JOHNSTON, SIOR
Senior Vice President
404.863.0254
bjohnston@kingindustrial.com

King
*Industrial
Realty, Inc.*

CORFAC
INTERNATIONAL

Industrial • Commercial • Investment
404.942.2000 | kingindustrial.com

Every effort has been made to provide accurate information, but no liability is assumed for errors or omissions.

EXCLUSIVELY LISTED BY:

STEVE RATCHFORD, SIOR, CCIM

Senior Vice President

sratchford@kingindustrial.com

404.942.2003

BILL JOHNSTON, SIOR

Senior Vice President

bjohnston@kingindustrial.com

404.863.0254

KING
*Industrial
Realty, Inc.*

Industrial • Commercial • Investment
404.942.2000 | kingindustrial.com