

Office Space for Lease

732-734 N Pastoria Ave, Sunnyvale, CA



Flex/Office for Lease

- Suite 732 - ±4,224 SF
- Suite 734 - ±4,224 SF Available 10/31
- 100% HVAC
- Small portion of office, rest open lab/flex space
- New Market Ready interiors completed
- AT&T Fiber
- Zoning: Mixed Industry Core

Up to ±8,448 Square Feet
with ±4,228 SF Available 10/31

Great Sunnyvale location

Strong growing daytime
employment population

Close to Hwy 101 & 237

A stylized signature of Brian Mason in black ink, with the letters 'CRE' written in a smaller font below the signature.

Brian Mason SIOR
EB Mason CRE
1.408.472.9498
brian@ebmasoncre.com
License No. 01229363

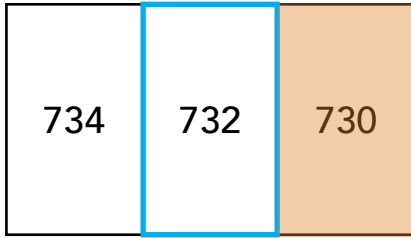
**AVISON
YOUNG**


Ben Damon
Avison Young
1.408.913.6940
ben.damon@avisonyoung.com
License No. 02089280

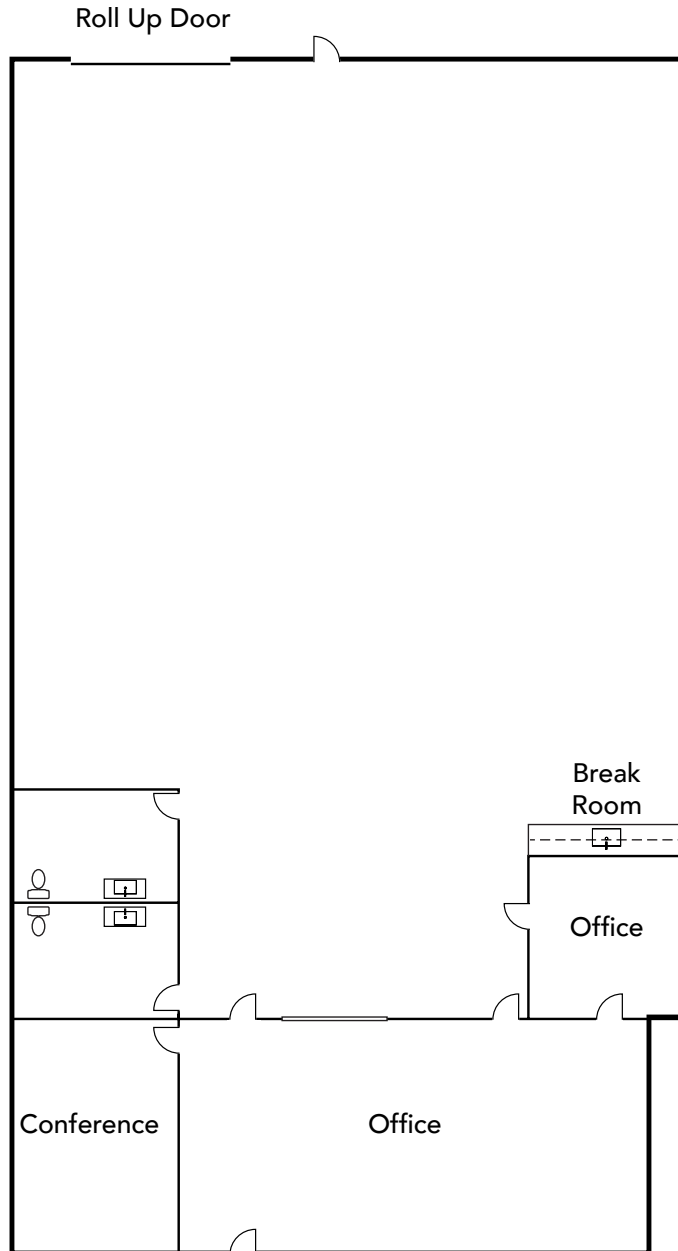
Office Space for Lease

732-734 N Pastoria Ave, Sunnyvale, CA

Suite 732 - ±4,224 Square Feet



 = Leased



Brian Mason SIOR
EB Mason CRE
1.408.472.9498
brian@ebmasoncre.com
License No. 01229363

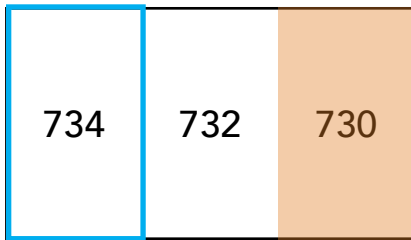
**AVISON
YOUNG**


Ben Damon
Avison Young
1.408.913.6940
ben.damon@avisonyoung.com
License No. 02089280

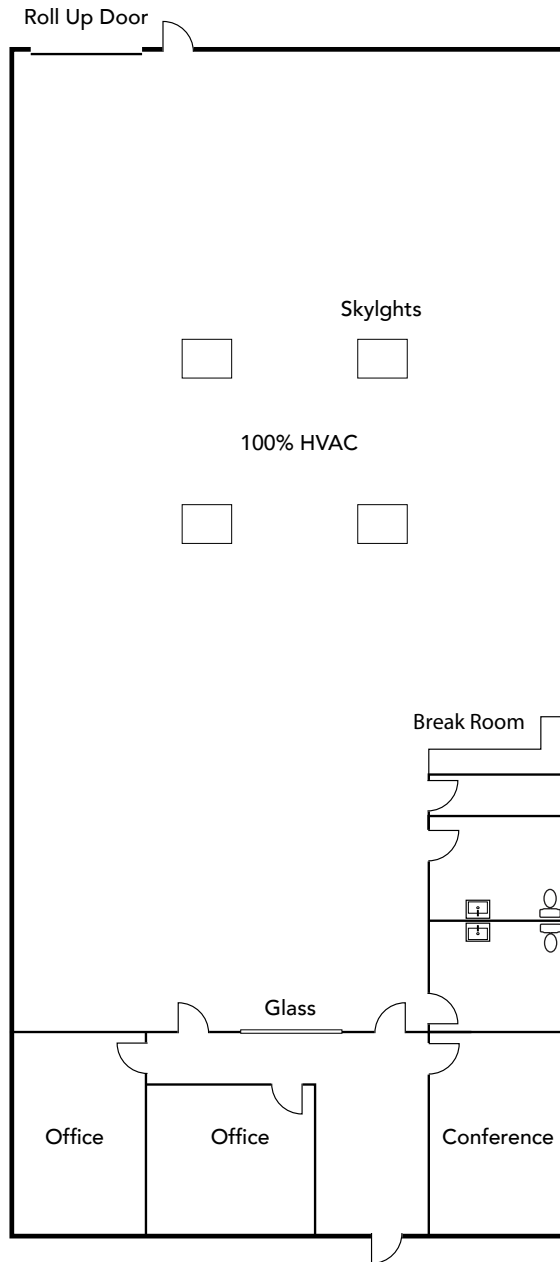
Office Space for Lease

732-734 N Pastoria Ave, Sunnyvale, CA

Suite 734 - ±4,224 Square Feet - Available 10/31



 = Leased



EB Mason
CRE

Brian Mason SIOR
EB Mason CRE
1.408.472.9498
brian@ebmasoncre.com
License No. 01229363



**AVISON
YOUNG**

Ben Damon
Avison Young
1.408.913.6940
ben.damon@avisonyoung.com
License No. 02089280

Office Space for Lease

732-734 N Pastoria Ave, Sunnyvale, CA



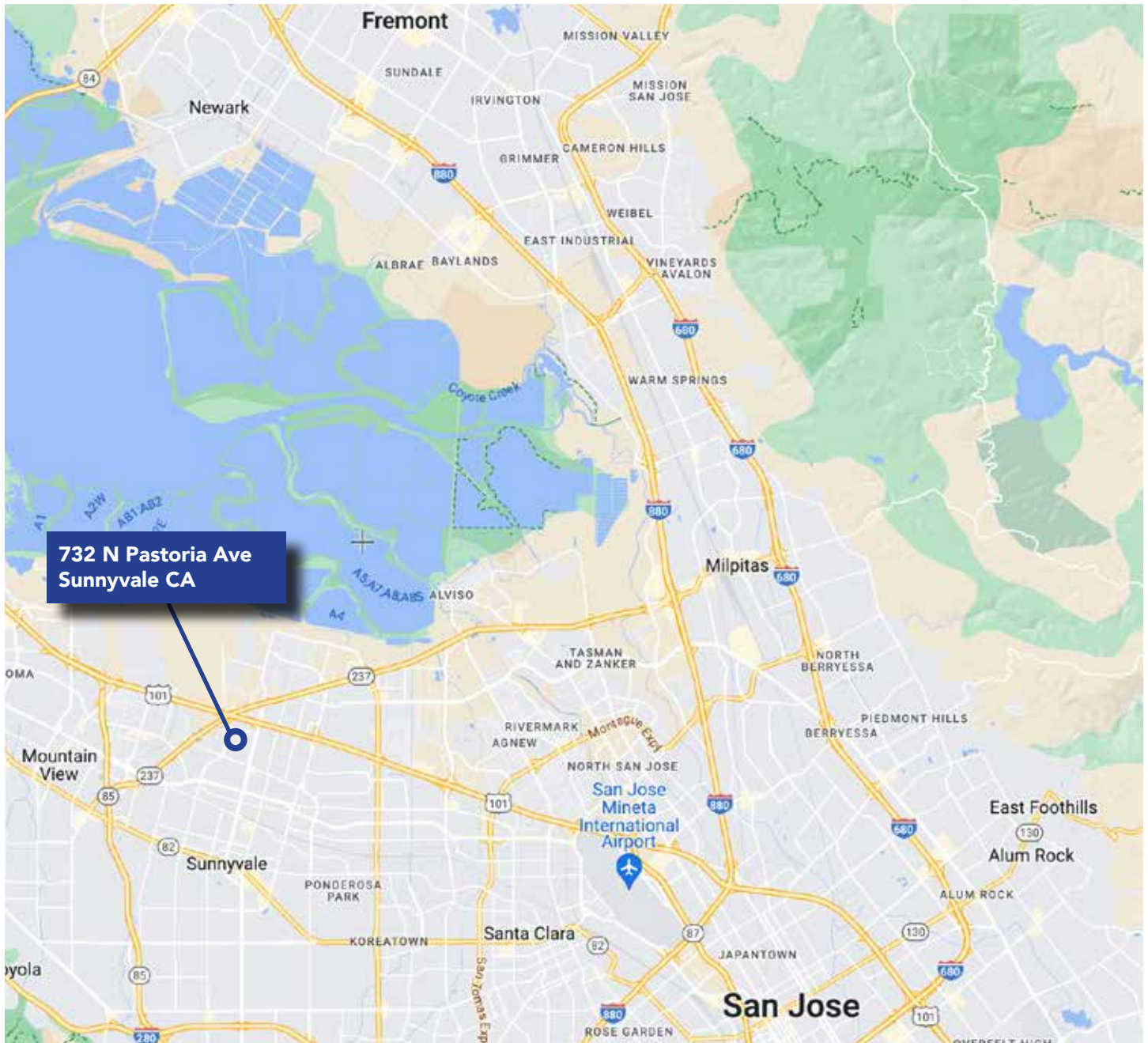
Brian Mason SIOR
EB Mason CRE
1.408.472.9498
brian@ebmasoncre.com
License No. 01229363



Ben Damon
Avison Young
1.408.913.6940
ben.damon@avisonyoung.com
License No. 02089280

Office Space for Lease

732-734 N Pastoria Ave, Sunnyvale, CA



Brian Mason SIOR
EB Mason CRE
1.408.472.9498
brian@ebmasoncre.com
License No. 01229363



Ben Damon
Avison Young
1.408.913.6940
ben.damon@avisonyoung.com
License No. 02089280