

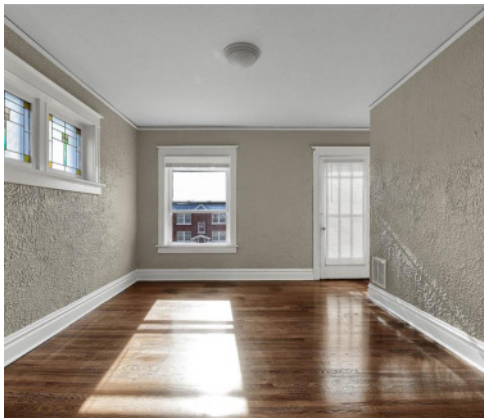


5027 Chippewa Street St Louis, MO 63109

0 **0** **4,138**
BED BATH SQ FT

OFFERED AT:
\$395,000

This fully occupied 4-family is the perfect opportunity to start or expand your investment portfolio! Ideally located in the heart of South City's Northampton neighborhood, you'll love the easy access to public transportation, shopping, and local favorites like Golden Hoosier, Bud's Pizza, Piper's Coffee, and Uncle Bill's...YUM! This stately brick 4-plex features consistent, functional layouts across all units, each offering a spacious living room, formal dining room, kitchen, full bath, and private bedroom. Tenants also enjoy outdoor space with a rear deck for every unit, plus charming front balconies for the two upper units. Additional highlights include a 2-car detached garage (currently rented for \$100/month) and an extra parking pad for added convenience. Current rents are \$900, \$850, \$825, and \$800, providing solid income from day one. One unit is month-to-month, while the remaining three are secured with long-term leases—offering both stability and flexibility for future upside. Don't miss this turnkey investment in one of South City's most desirable neighborhoods!



Anna Chancellor
314-353-0336 - Office

