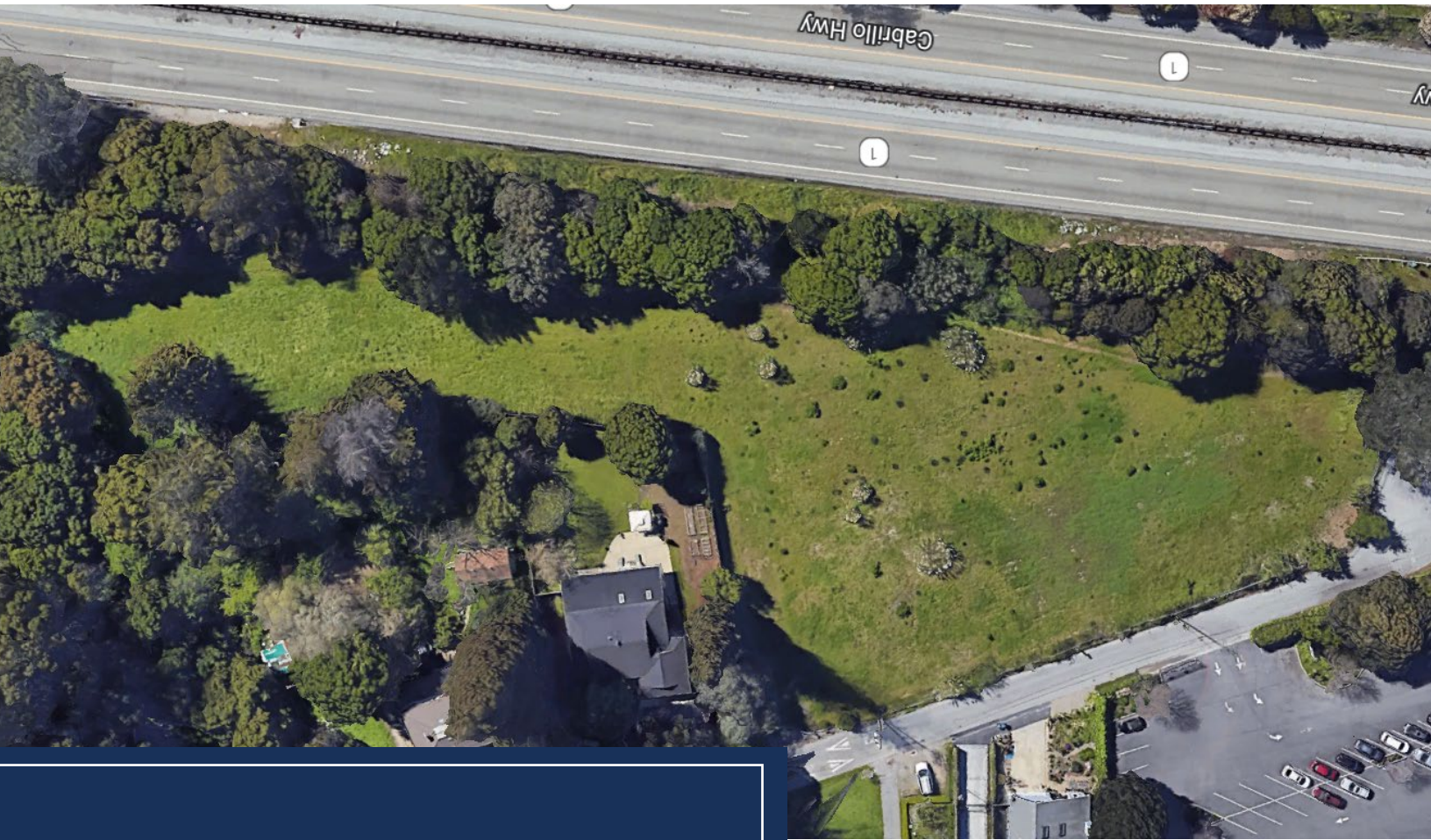


2740 MATTISON LN SANTA CRUZ, CA



2.75 ACRES
FOR SALE IN
SANTA CRUZ

w/Tentative Map

GLOBAL
COMMERCIAL



LIVE OAK / PLEASURE POINT NEIGHBORHOOD

The swath of unincorporated suburbia between Santa Cruz and Capitola is known as Live Oak; near the ocean it's called Pleasure Point; and in Santa Cruz Tribalese it's pronounced "Eastside."

Pleasure Point is a warren of beach bungalows peppered with mini-mansions, this neighborhood is steeped in surf culture and claims one of the hands-down best shopping districts in the county.

Minutes away, at 41st Avenue and Portola is a fun district of sushi bars, coffeehouses, surf and skate shops and thrift stores with a sweet surf town vibe that does not stop.

SCHOOLS

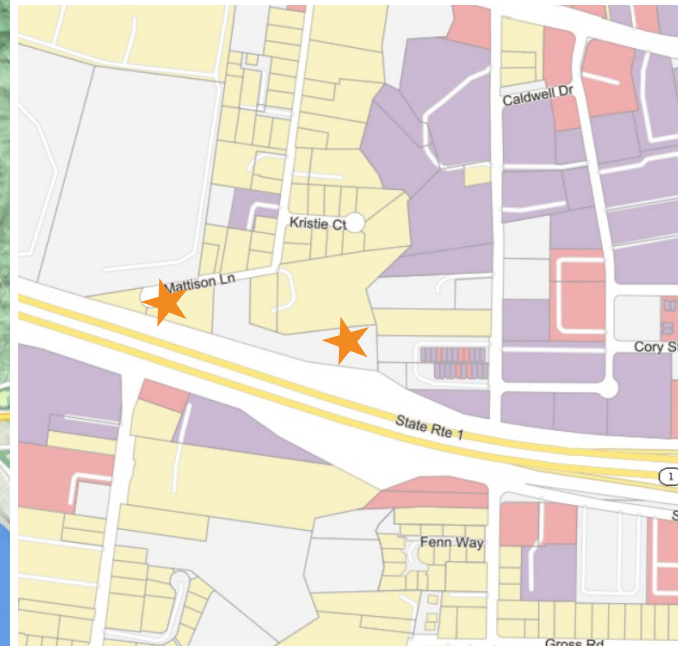
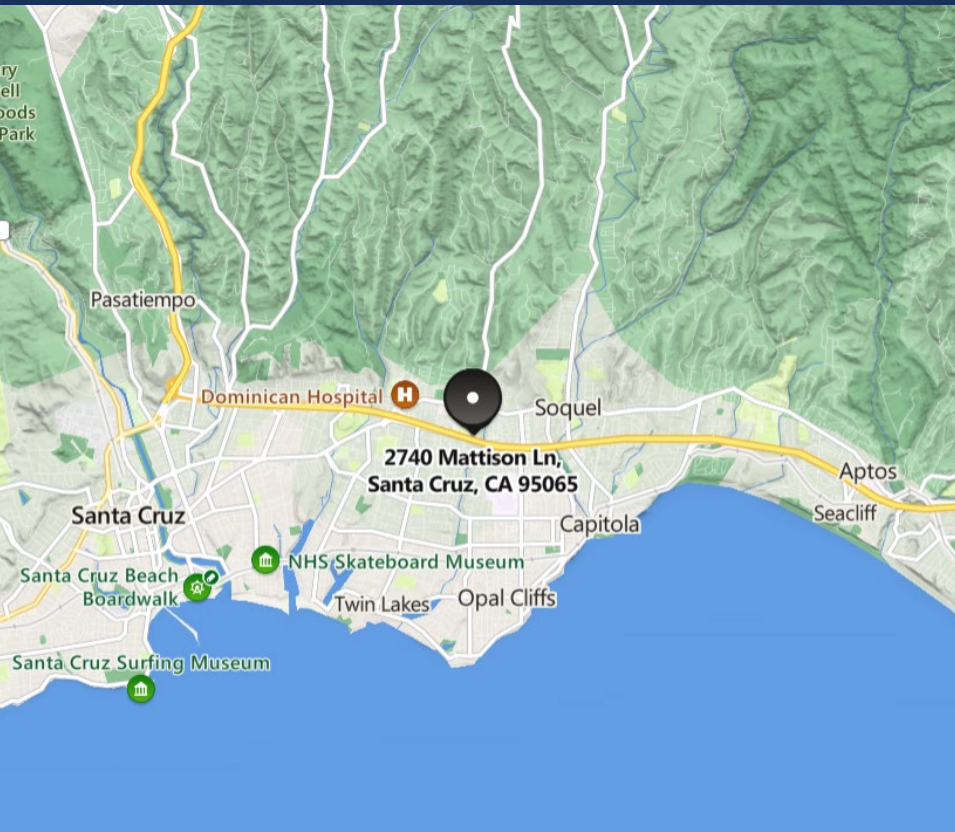
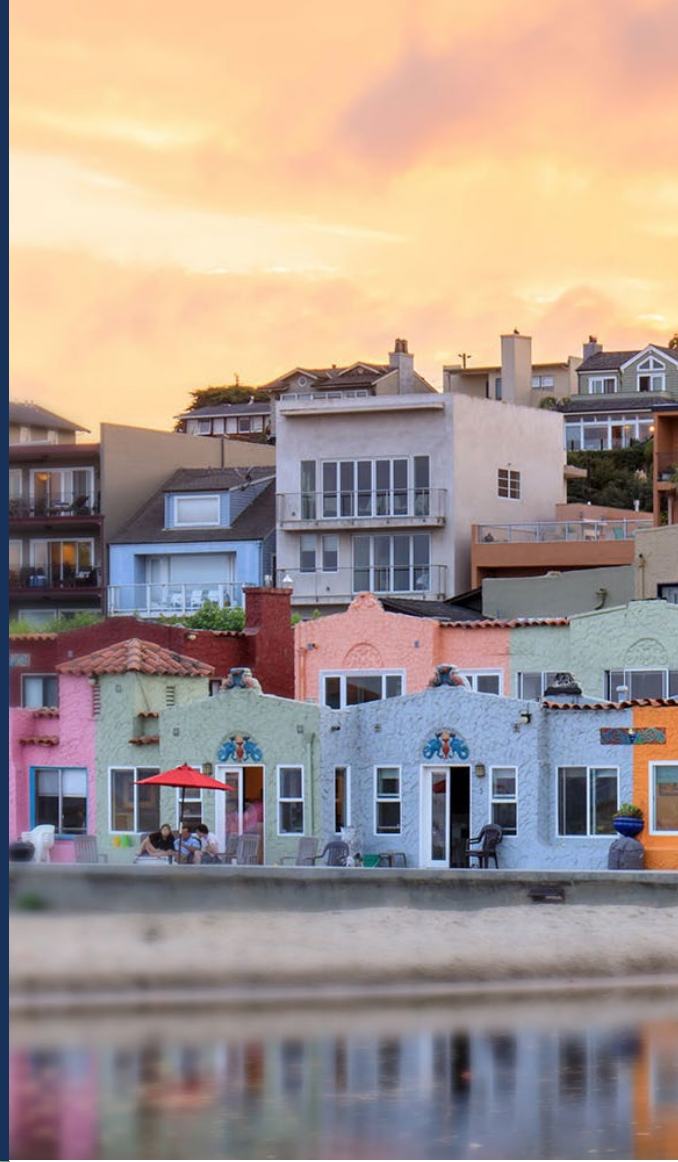
- **Santa Cruz Gardens Elementary School: 7/10 K-5** Distance 1.3 miles
- **New Brighton Middle School: 6/10 6-8** Distance 1.4 miles
- **Soquel High School: 7/10 9-12** Distance 09 miles
- **Harbor High School: 7/10 9-12** Distance 1.1 miles

SANTA CRUZ AREA MAP

Located in California, Santa Cruz is well known for its moderate climate, natural environment and alternative community lifestyle.

Surfing is one of the most popular activities in the city and thousands of tourists all around the world visit the city due to its magnificent beaches and incredible scenic beauty.

The city is home to the University of California and various state parks.





DEMOGRAPHICS

3 Mile Radius

AVERAGE AGE 41

TOTAL # HH 29,787

POPULATION 73,170

AVG. HH INCOME 145,575





DISCLAIMER

The information contained in the following Marketing Brochure is proprietary and strictly confidential. It is intended to be reviewed only by the party receiving it from Global Commercial Properties, Inc. and should not be made available to any other person or entity without consent of Global Commercial Properties, Inc. This information has been prepared to provide summary and information to prospective purchasers, for the solicitation of interest and is not an offer to sell the property. Only a fully executed Real Estate Purchase Agreement shall bind the property.

The information provided herein is deemed to be accurate and to establish only a preliminary level of interest in the subject property. The information contained herein is not a substitute for thorough due diligence investigation. Global Commercial Properties, Inc. has not made any independent investigation, and makes no warranty or representation, with respect to the present or future use or zoning of the subject property, the future projected financial performance of the property, the size measurements or boundaries of the property and improvements, ADA-related issues or compliance, the presence or absence of contaminating or hazardous substances, PCB's or asbestos, the compliance with State, Federal, County or municipal law, nor the physical condition of the improvements thereon. The information contained in this Marketing Brochure has been obtained from sources believed to be reliable; however, Global Commercial Properties, Inc. has not verified, and will not verify, any of the information contained herein, nor has Global Commercial Properties, Inc. conducted any investigation regarding these matters and makes no warranty or representation whatsoever regarding the accuracy or completeness of the information provided. Prospective purchaser is advised and agrees to make its own investigation and determination regarding all matters affecting the value, condition, utility, size, compliance with Laws, and all aspects of the Property's desirability and suitability for Purchasers intentions.

The information contained herein is subject to change without notice and the recipient of these materials shall not look to the Owner or the Broker, Global Commercial Properties, Inc., or any of their officers, employees, representatives, independent contractors or affiliates, for the accuracy or completeness thereof.

Property will be shown by appointment only. Please do not disturb occupants of the property.

GLOBAL

COMMERCIAL



RALPH LONGO
Principal

DRE #01202211

Contact Us

408-529-1362

rlongo@globalcommercialprop.com