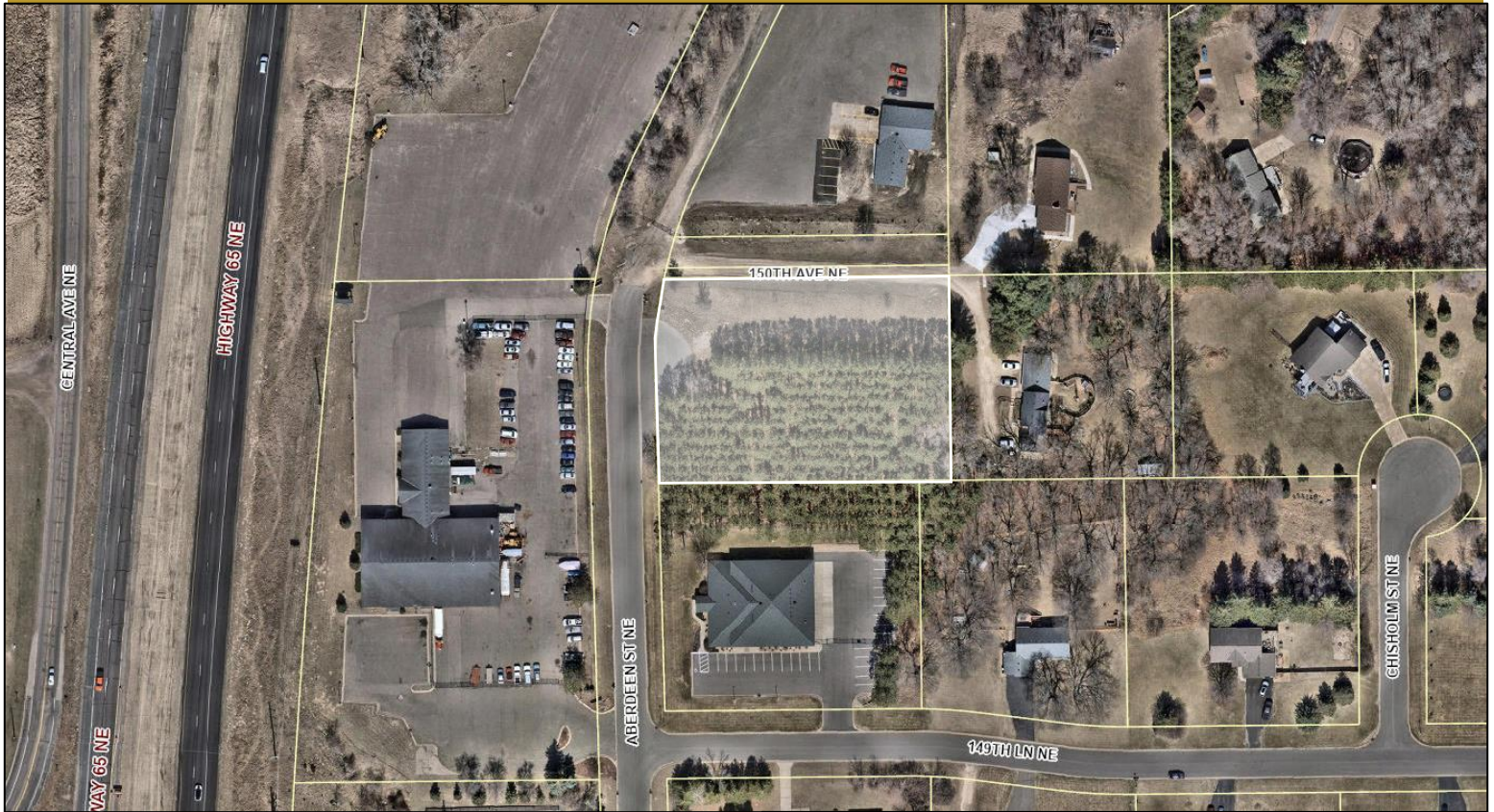




PREMIER
COMMERCIAL
PROPERTIES

FOR SALE



Industrial Land

14961 Aberdeen Street
Ham Lake, MN

AVAILABLE SPACE

- +/- 1.31 Acres
- PUD Zoning with CD-2 as Underlying Use
- Shovel ready site
- Built-To-Suite Lease opportunity
- Close proximity to Hwy 65
- Allows for a wide variety of uses and allows for Metal Buildings



PROPERTY DETAILS
For Sale: \$285,318

FOR MORE INFORMATION, CONTACT

Richard Lee

612-718-9919

richlee@premiercommercialproperties.co



9-220.3 Commercial Development II (CD-2)

The CD-2 Districts are located adjacent to the CD-1 Districts, and constitute a second tier of commercial activities along the T.H. 65 corridor. These districts also have importance in presenting a visually pleasing image to the traveling public, but are less visible from the T.H. 65 roadway than the CD-1 districts.

a) Standards for Site and Building Construction

- i) Metal or pole-type buildings shall be permitted if surfaces meet the requirements of ii below, and, provided that no galvanized surface may appear, all roofs shall be colored and incorporate a minimum 18-inch soffit on eave edges, 12-inch overhang on gable ends, and 6-inch fascia.

- ii) Metal panel with exposed fasteners or architectural metal panel with hidden fasteners may be used for roof surfaces. All wall surfaces may be composed of metal panel, brick, decorative masonry, stone, precast panel, architectural concrete, glass, stucco or wood framed with horizontal lap siding. The exterior wall surface facing or with the most exposure to a public street or right-of-way, shall have a wainscot at least 42-inches in height which is composed of a contrasting color or material.

b) Permitted Uses (Including uses that are ancillary to the main use)

- All Permitted Uses in the CD-1 District
- Broadcasting Studios
- Building Supply Yards/Lumber Yards
- Enclosed Storage and Office/Warehousing
- Landscaping Businesses
- Manufacturing involving no non-enclosed storage
- Public Utilities (metal or pole type construction allowed)
- Research laboratories
- Used Vehicle Sales - limited to the following:
 - ATV's (all-terrain vehicles)
 - Automobiles
 - Boats
 - Campers
 - Golf Carts
 - Motorcycles, Motorbikes and Scooters
 - Recreational Vehicles
 - Snowmobiles
 - Commercial Trucks
 - Pickup Trucks
 - Trailers less than 30 feet in length
- Utility Companies



c) Conditional Uses

- All conditional uses or temporary conditional uses in the CD-1 District
- Construction Service Contractors such as Concrete Masonry, Roofing, Siding, and Landscaping Contractors
- Flea Markets under Article 11-1500
- Kennels
- Pawn Shops under Article 11-1300
- Truck Terminals – as defined as a location where commercial trucks load and unload cargo on a regular basis with Large Truck and Equipment Repair (Body and Driveline Repair) as a secondary use
- Self-storage facilities, but not including the limitations and conditions imposed for such facilities as found in Article 9-220.2 (c).

9-210.5 Planned Unit Development (PUD) A PUD district is a development which involves single family housing of the variety found in the R-1 District, combined with a second active land use of a non-residential nature, or a development which involves a single active land use of a residential nature which differs from the housing types commonly found in the R-1 district, such as *townhomes* or facilities found in the R-AH districts. The following features shall be present in PUD developments:

- a) Development Agreement** Every PUD shall require the negotiation and execution of a written development agreement, for recording with the plat of the PUD.
- b) Permitted Uses, Conditional Uses, and Temporary Conditional Uses** The development agreement shall state the *permitted uses, conditional uses and temporary conditional uses* which shall be allowed in the PUD. For non-residential uses, the development agreement shall characterize these uses by reference to a particular zoning category found elsewhere in this code, and while the general zoning category of the property shall be "PUD", the non-residential usage shall be subject to the same requirements and conditions as are found for the zoning category which is chosen to characterize that particular non-residential usage.