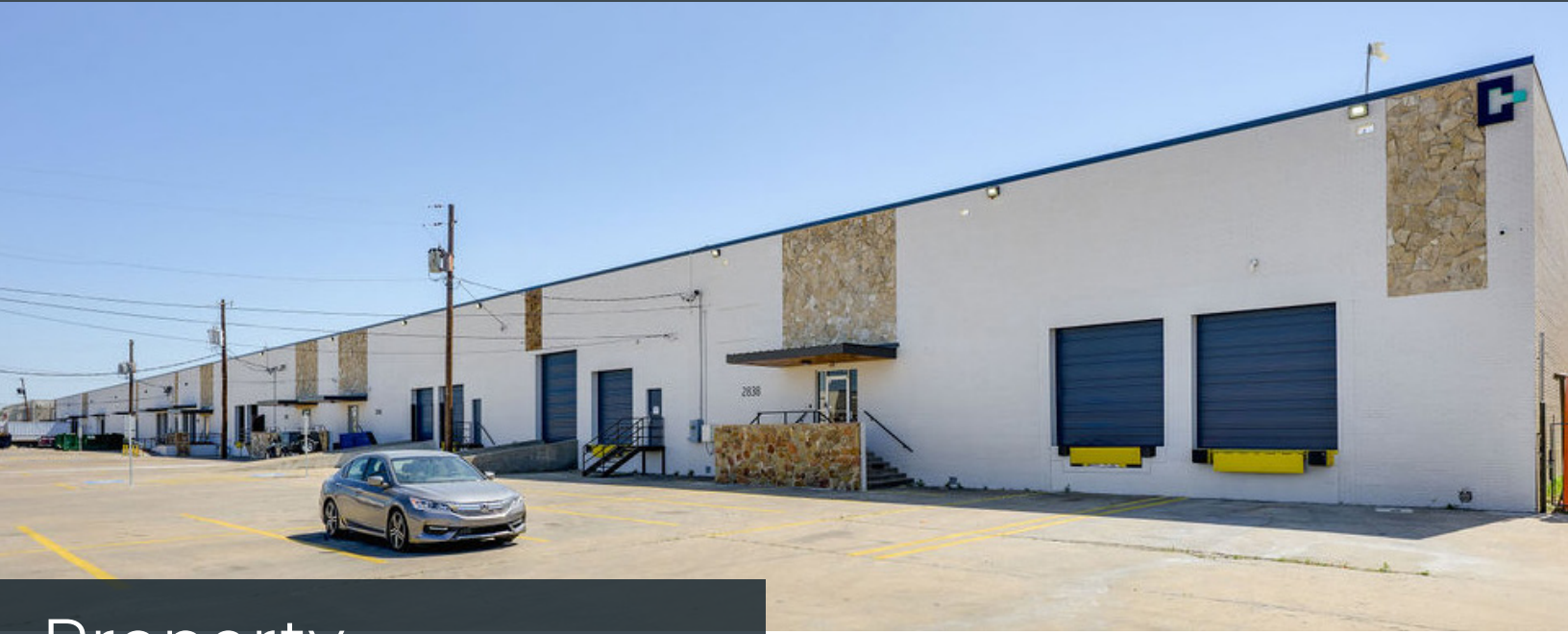


2838

ANODE LANE

Dallas, Texas 75220

19,840 SF
For Lease



Property Features

- 19,840 SF
- +/- 1,638 SF Office
- Newly Renovated
- 18' Clear
- 3 Dock Highs & 1 Oversized Ramp
- 400 Amp 120/240V 3-Phase High Leg
- End-Cap Unit
- Proximity to I-35 E, I-635 and Loop 12

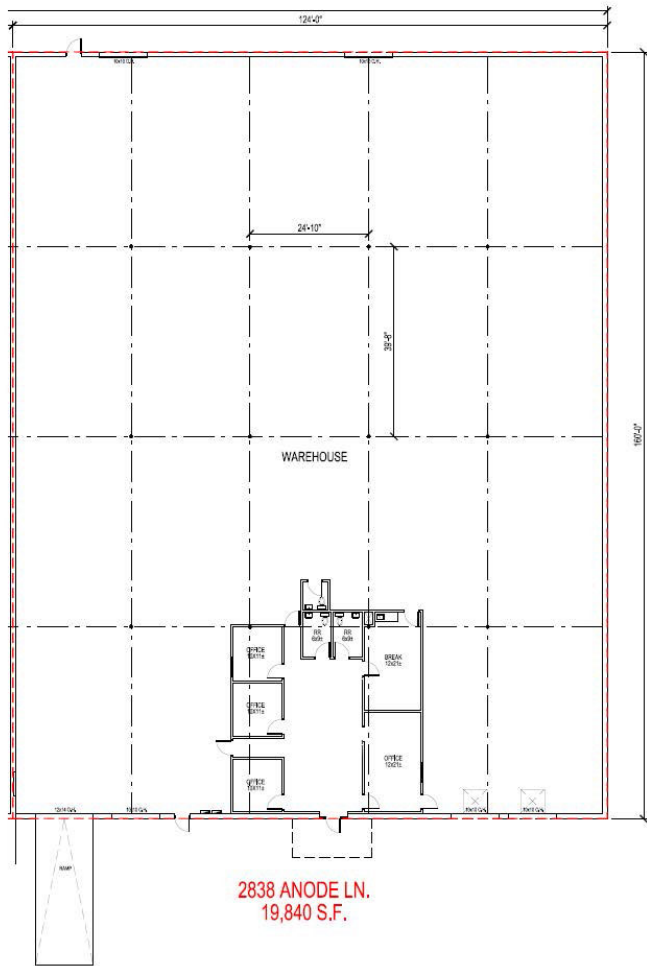


JON SKIDMORE
214.213.1979
jskidmore@holtlunsford.com

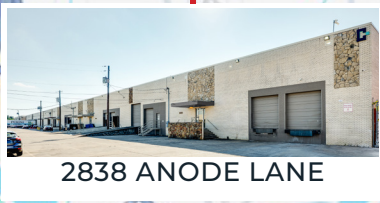
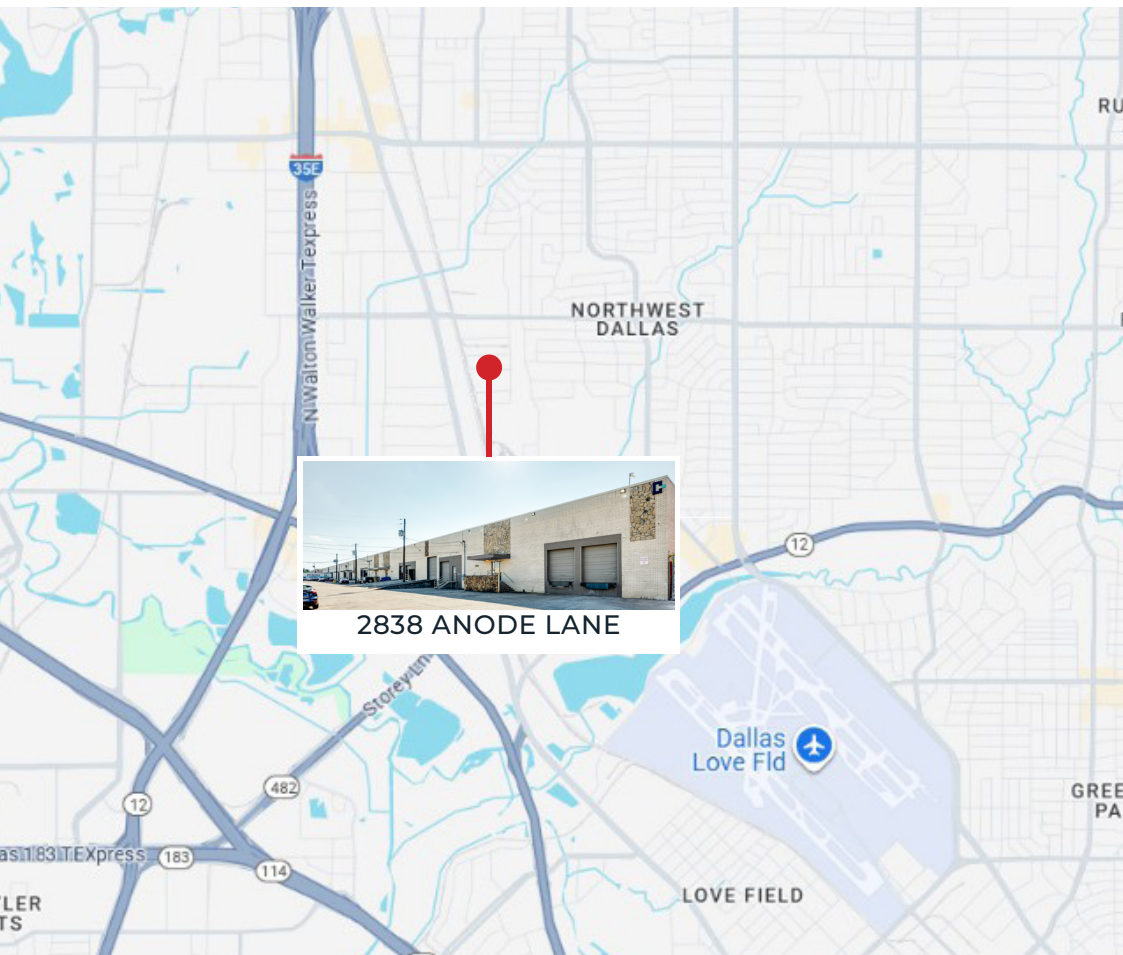
ANDREW GILBERT
817.988.5262
agilbert@holtlunsford.com



Floor Plan



2838 ANODE LANE, DALLAS, TEXAS



2838 ANODE LANE

Drive Times

- DALLAS CBD — 7 miles
- DFW AIRPORT — 13 miles
- DALLAS LOVE FIELD — 5 miles
- I-35 — 2 miles
- TX-183/TX-114 — 8 miles
- LOOP 12 — 6 miles
- I-635 — 9 miles

JON SKIDMORE
214.213.1979
jskidmore@holtlunsford.com

ANDREW GILBERT
817.988.5262
agilbert@holtlunsford.com

