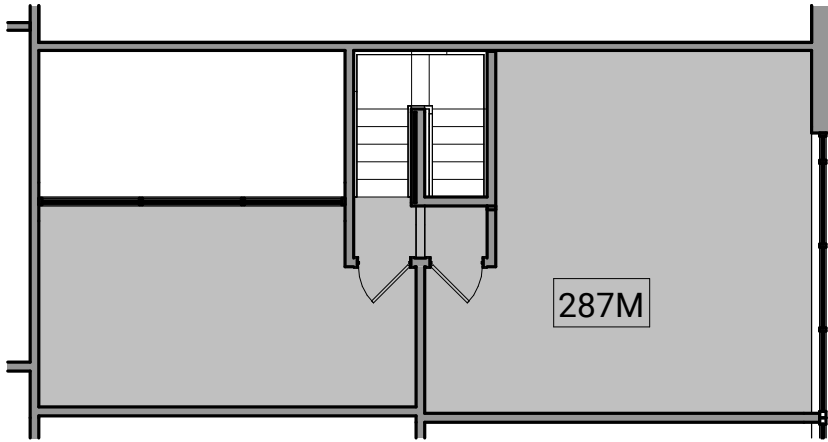
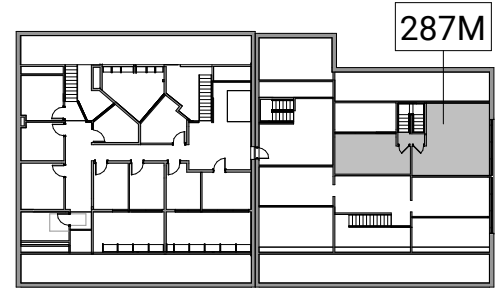


FOR LEASE
Liberty Plaza

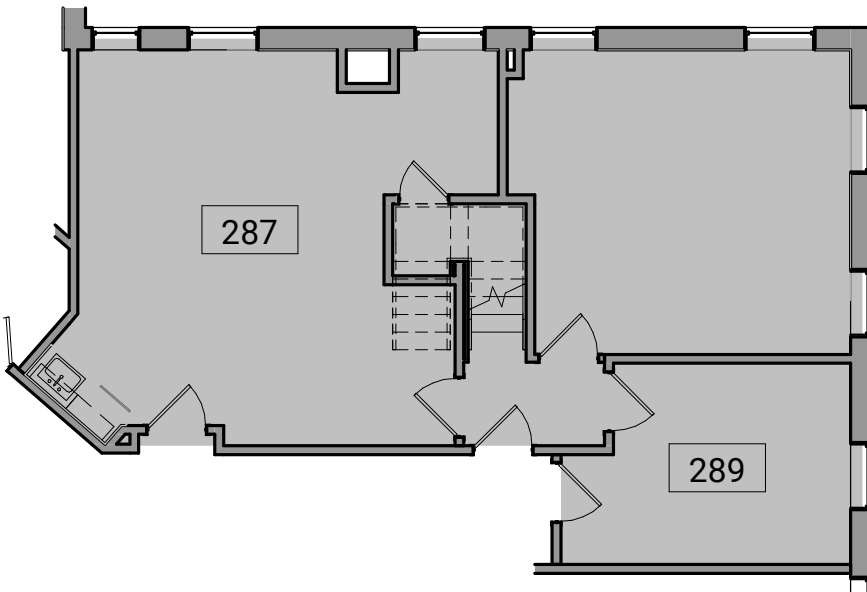
255 E Liberty St, Ann Arbor, MI 48104



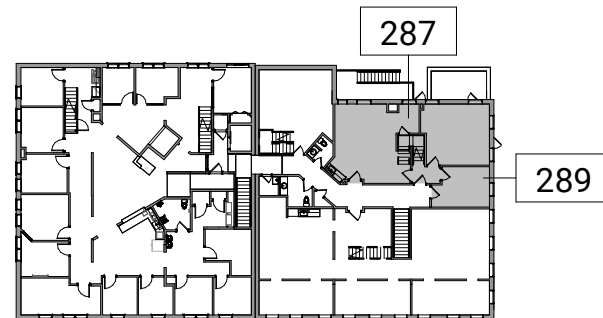
4 Suite 287M - Partial Mezzanine Existing Floor Plan
1" = 10'-0"
10'



3 Key Plan - Mezzanine
1" = 50'-0"
50'



2 Suite 287, 289 - Partial Level 02 Existing Floor Plan
1" = 10'-0"
10'



1 Key Plan - Level 02
1" = 50'-0"
50'

FOR MORE INFORMATION CONTACT KAREN O'NEIL

Commercial Leasing Associate | koneil@oxfordcompanies.com | 734.665.6500