



# UC San Diego Restaurant Space For Lease

UC San Diego Campus, La Jolla

2nd Generation  
Restaurant Space

Located within the  
Student Center



## Highlights & Details

**Fully fixtured premises** that includes a large type-1 hood, grease interceptor, dining room, and exclusive outdoor patio.

**Located within the Student Center**, a central hub on campus for various student services.

**Simple conversion** for an experienced hospitality operator to implement their own concept at a fraction of the cost.

Be a part of the exciting growth of one of California's top universities!

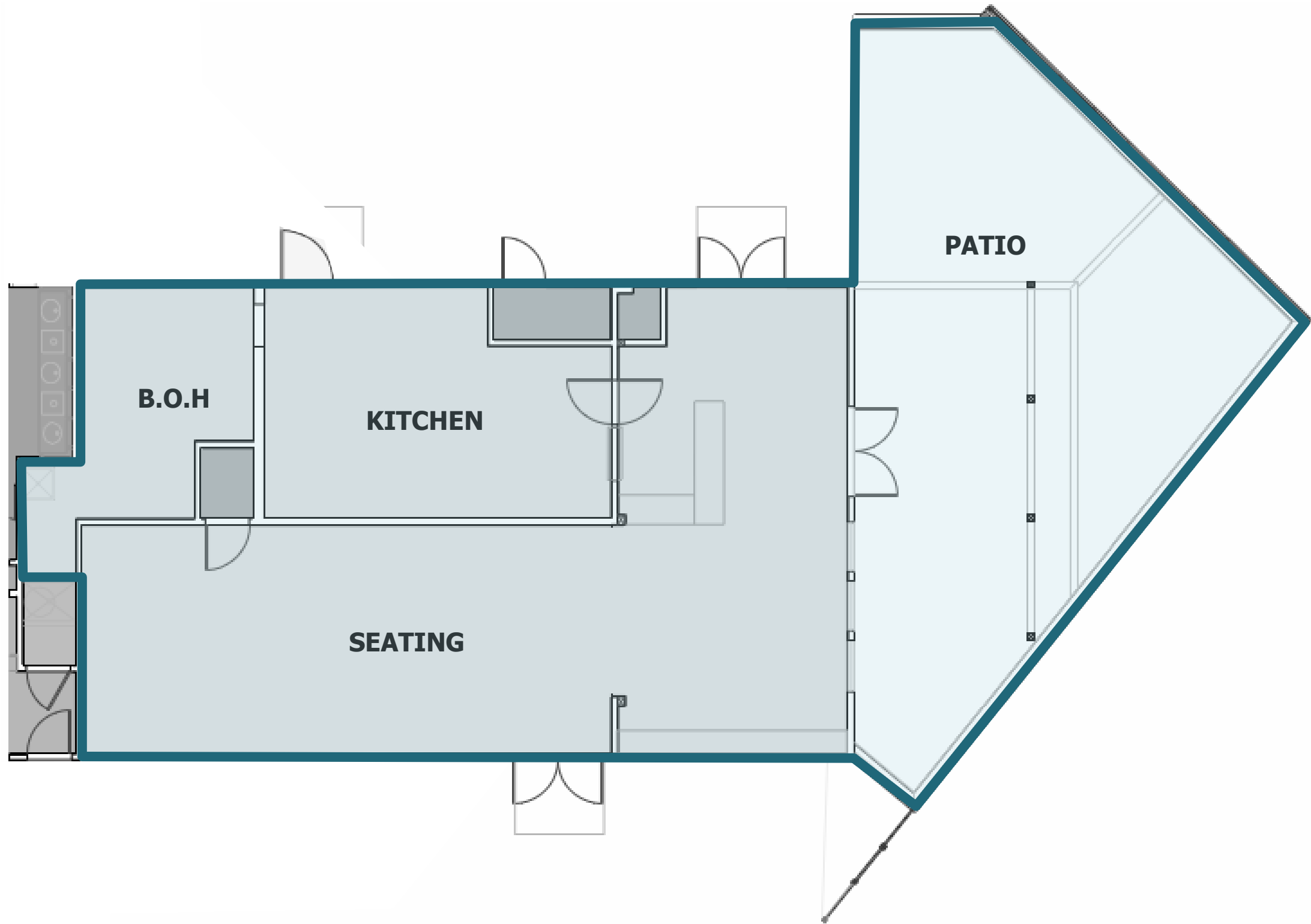
**Suite Size:** +/- 1,560 SF plus exclusive patio

**Rent:** Contact Broker

**Lease Term:** Contact Broker

**Signage:** Available





**floorplan**

\*This AI-generated rendering is for illustrative purposes only and depicts a conceptual café layout. It does not represent final designs, construction documents, or guaranteed outcomes; actual results may vary.



BUENOS  
BUENOS  
DIAS

MAS  
TACOS  
POR  
FAVOR

TACOS  
BE HAPPY

### MENU

**TACOS**  
CARNE ASADA  
AL PASTOR  
POLLO ASADO  
BAJA FISH  
VEGGIE

**BURRITOS**  
CARNE ASADA  
AL PASTOR  
POLLO ASADO  
VEGGIE

**SIDES**  
CHIPS & SALSA  
GUACAMOLE  
ESQUITES

**DRINKS**  
AGUAS FRESCAS  
HORCHATA  
JAMAICA

rendering



premises



premises



**Student Center**

SCHOLARS DRIVE N

EXPLORATION DRIVE

N TORREY PINES ROAD

SCHOLARS DRIVE S

MARSHALL FIELD

MUIR LANE

SCHOLARS LANE

TATA HALL

COALITION

COMMUNICATION

CATALYST

ARTS & HUMANITIES

MOSAIC

MANDLER HALL

MCGILL HALL

HUMANITIES AND SOCIAL SCIENCES

NATATORIUM

MAIN GYMNASIUM

RECREATION GYMNASIUM

SOLIS HALL

COGNITIVE SCIENCE BUILDING

PETERSON HALL

FACULTY CLUB

BIOLOGY BUILDING

RECREATION GYMNASIUM

GEISEL LIBRARY

STUDENT HEALTH AND WELLNESS CENTER

CAREER SERVICES

MANDEVILLE LANE

GEORGE PALADE LABORATORIES

CELLULAR AND MOLECULAR MEDICINE EAST

LEICHTAG BIOMEDICAL RESEARCH

ENGINEER LANE

JACOBS HALL

POWELL-FOCHT BIOENGINEERING HALL

POWELL STRUCTURAL SYSTEMS LABORATORY

CENTER FOR MEMORY RECORDING RESEARCH

PRICE CENTER EAST

PRICE CENTER WEST

STUDENT SERVICES CENTER

TOWN SQUARE

CENTER HALL

ATKINSON HALL

WARREN STUDENT ACTIVITY CENTER

COMPUTER SCIENCE AND ENGINEERING BUILDING

EBU II

WARREN ADMINISTRATIVE MODULE

WARREN LECTURE HALL

HALICIOGLU DATA SCIENCE INSTITUTE

CANYONVIEW RECREATION & ATHLETICS ADMINISTRATION

MATTHEWS LANE

PRICE CENTER EAST

HIGH BAY PHYSICS LABORATORY

SCIENCE AND ENGINEERING RESEARCH FACILITY

STRUCTURAL AND MATERIALS ENGINEERING

VISUAL ARTS FACILITY

EPSTEIN FAMILY AMPHITHEATER

DESIGN & INNOVATION BUILDING

409 UNIVERSITY CENTER

PEPPER CANYON HALL

CONRAD PREBYS MUSIC CENTER

965 UNIVERSITY CENTER

GILMAN PARKING STRUCTURE

GILMAN DRIVE

RYA

VELA

JUSTICE LANE

NORTH CAMPUS SWITCHING STATION

CANYONVIEW FILTER FACILITY

CANYONVIEW AQUATIC CLIMBING FACILITY

CANYONVIEW FILTER FACILITY

CANYONVIEW AQUATIC CLIMBING FACILITY

M CAR

# The University

- **Established in 1960**, UC San Diego has grown to become one of the top 15 research universities in the world.
- **Main campus is located** near the Pacific Ocean on approximately 1,200 acres of coastal woodland in La Jolla, California.
- **UC San Diego enrolls the largest number** of students among colleges and universities in San Diego County.
- **UC San Diego is the largest employer** based in San Diego County.
- **40,285 Total number** of full and part-time academic and staff employees at UC San Diego (as of Fall 2023)
- **For more than a decade**, U.S. News & World Report has included UC San Diego among the nation's top 10 public universities.
- **UC San Diego Athletics** proudly advances to the Big West NCAA Division One Conference in 2020.



# The Retail Climate

- **Approximately 50,000 customers** are on-campus on a daily basis. Once on campus for the day, most people stay on campus for the day and eat on campus.
- **Student population** 43,381 (33,096 undergrad)
- **Students living on campus** are currently 22,000, projected to increase to over 27,000 by 2030.
- **Approximately 40% of students** are housed on campus. Freshman students are not allowed to have cars at school.
- **23,285 faculty and staff** work on campus, with higher disposable income than students. They represent 33% of the campus headcount daily (larger than both on campus and off campus students).
- **Faculty and Staff numbers** are projected to grow 20% by 2030.
- **Annual retail spending** for on campus students = \$5,675, students who live off campus = \$7,058, faculty and staff \$8,256
- **Blue Line Trolley** Line has increased accessibility to campus for all San Diego locals and tourists with over 2.4 Million annual rides to and from campus.



Disclaimer - This document has been prepared by Next Wave Commercial Real Estate, Inc. for advertising and general information only. The information included has been obtained from sources believed to be reliable, and while we do not doubt its accuracy, we have not verified it and make no guarantees, representations or warranties of any kind, expressed or implied, regarding the information including, but not limited to, warranties of content, accuracy and reliability. Any projections, opinions, assumptions or estimates used are for example only and do not represent the current or future performance of the property. Any interested party with their advisor(s) should conduct a careful, independent investigation of the property to determine to your satisfaction the suitability of the property for their needs.



**Dino De Salvio**

dino@nextwavecommercial.com

CA Lic. #02035557

**619.326.4400**

**Next Wave Commercial**

6830 La Jolla Blvd. La Jolla, CA 92037

CA Lic. #02010077

**contact**

