



# Howard O'Hare Business Center – Suite #202

**200 E. Howard Avenue  
DES PLAINES, IL**

## Available

7,346 SF

## Warehouse / Office

639 SF (can be increased) / 6,707 SF (can be reduced)

## Drive-In Doors

One (1) 8' x 12'

## Net Lease Rate

Subject to Offer

## Available

Immediate

## Flex Space for Lease

### Property Highlights

- Front corner unit with great exposure
- Multi-tenant, single story complex
- Great window lines / 17 privates
- Abundant surface parking (40+ positions)
- Rosemont Entertainment District – 13 mins.
- O'Hare terminal - 8 mins.
- South Cargo Entrance -14 mins.
- Downtown Chicago – 24 mins.

*For information, please contact:*

### Tom Gath

*Managing Director*

t 773-957-1415

thomas.gath@nmrk.com

8750 W. Bryn Mawr, Suite 350  
Chicago, IL 60631

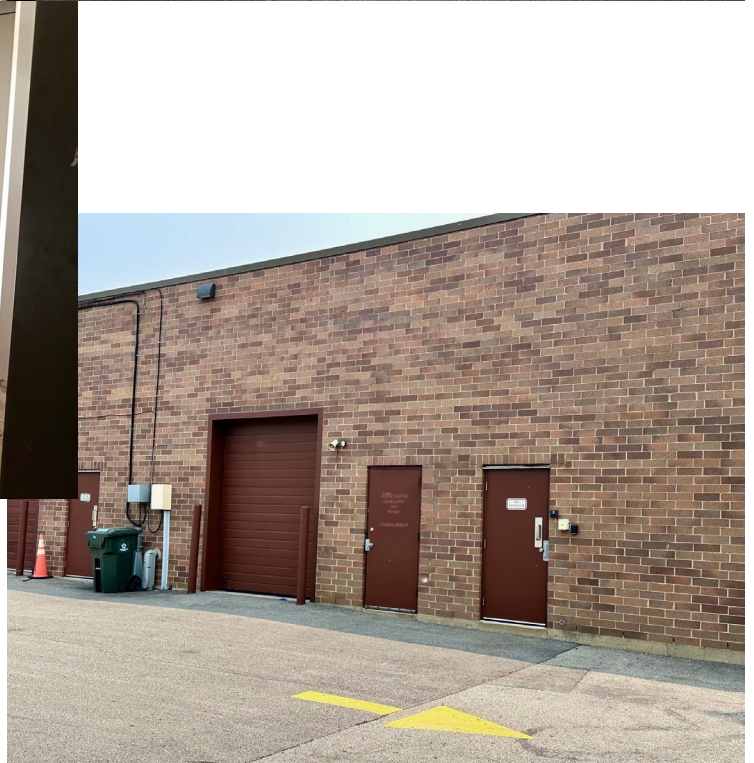
[nmrk.com](http://nmrk.com)

# NEWMARK

The information contained herein has been obtained from sources deemed reliable but has not been verified and no guarantee, warranty or representation, either express or implied, is made with respect to such information. Terms of sale or lease and availability are subject to change or withdrawal without notice.

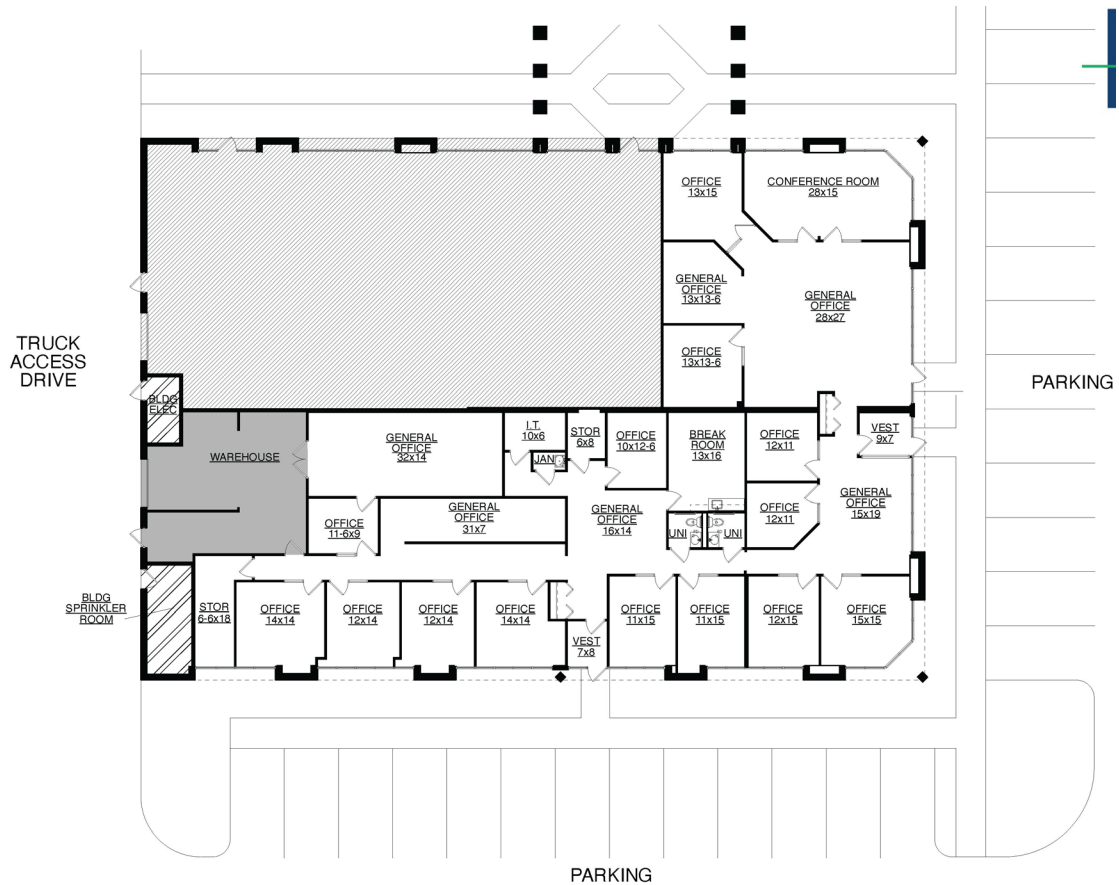
# HOWARD O'HARE BUSINESS CENTER – DES PLAINES, IL

Property Pics



# HOWARD O'HARE BUSINESS CENTER – DES PLAINES, IL

Aerial



# HOWARD O'HARE BUSINESS CENTER – DES PLAINES, IL

Map

