

1501 E Osborn Rd
Phoenix, AZ

 Transwestern



Office Suites Available For Immediate Occupancy

Kathleen Morgan

Managing Director

1 602 809 1048

kathleen.morgan@transwestern.com

Kevin Smigiel

Vice President

1 602 550 9295

kevin.smigiel@transwestern.com

Vince Femiano

Managing Director

1 602 791 3310


vince.femiano@transwestern.com

Andrew Olivet

Associate

1 602 370 2685

andrew.olivet@transwestern.com

 Transwestern

The information provided herein was obtained from sources believed reliable; however, Transwestern makes no guarantees, warranties or representations as to the completeness or accuracy thereof. The presentation of this property is submitted subject to errors, omissions, change of price or conditions, prior sale or lease, or withdrawal without notice. Copyright © 2026 Transwestern.

Office Spec Suites Available for Immediate Occupancy



\$16.00 Full Service, Net of Janitorial
3% Annual Increase

- **Suite 202:** ±1,221 RSF - *Spec Suite*



Available for **Immediate Occupancy**

Kathleen Morgan

Managing Director
1 602 809 1048
kathleen.morgan@transwestern.com

Kevin Smigiel

Vice President
1 602 550 9295
kevin.smigiel@transwestern.com

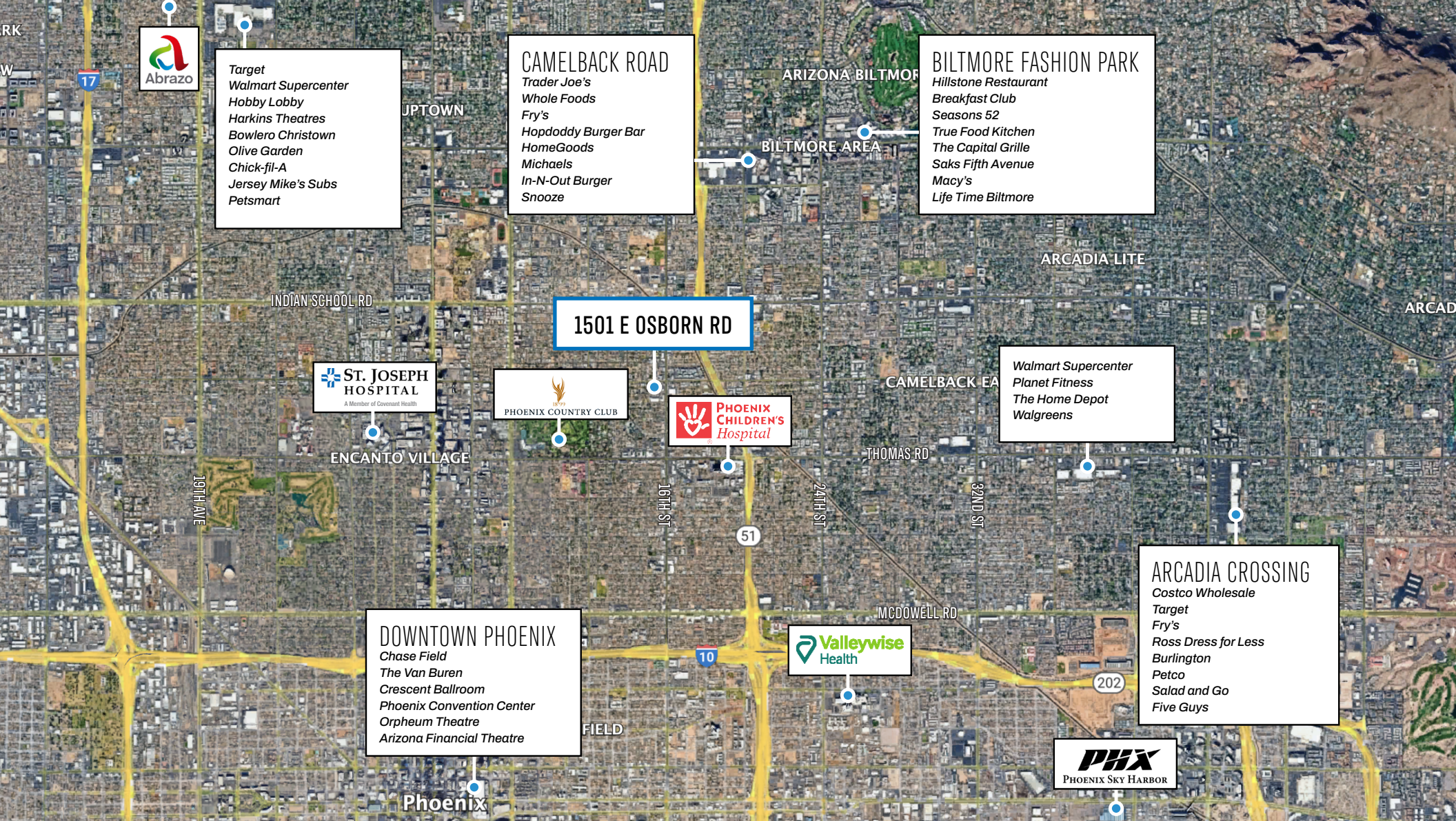
Vince Femiano

Managing Director
1 602 791 3310
vince.femiano@transwestern.com

Andrew Olivet

Associate
1 602 370 2685
andrew.olivet@transwestern.com





Available for **Immediate Occupancy**



Kathleen Morgan
 Managing Director
 1 602 809 1048
 kathleen.morgan@transwestern.com

Kevin Smigiel
 Vice President
 1 602 550 9295
 kevin.smigiel@transwestern.com

Vince Femiano
 Managing Director
 1 602 791 3310
 vince.femiano@transwestern.com

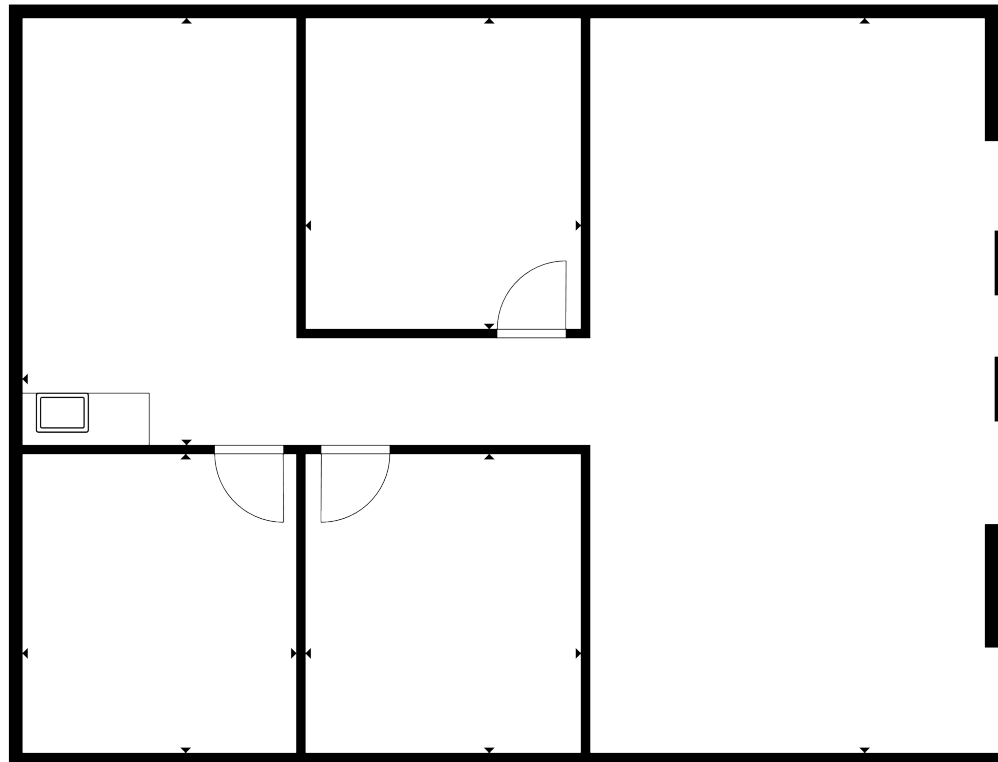
Andrew Olivet
 Associate
 1 602 370 2685
 andrew.olivet@transwestern.com



Available For

Immediate Occupancy

▪ **Suite 202:** ±1,221 RSF



Kathleen Morgan

Managing Director
1 602 809 1048
kathleen.morgan@transwestern.com

Kevin Smigiel

Vice President
1 602 550 9295
kevin.smigiel@transwestern.com

Vince Femiano

Managing Director
1 602 791 3310
vince.femiano@transwestern.com

Andrew Olivet

Associate
1 602 370 2685
andrew.olivet@transwestern.com