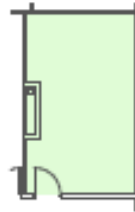


FIRST FLOOR
SUITE 166



TENANT AREA	COMMON (16%)	RENTABLE AREA
262 SF	42 SF	304 SF

1" = 20'

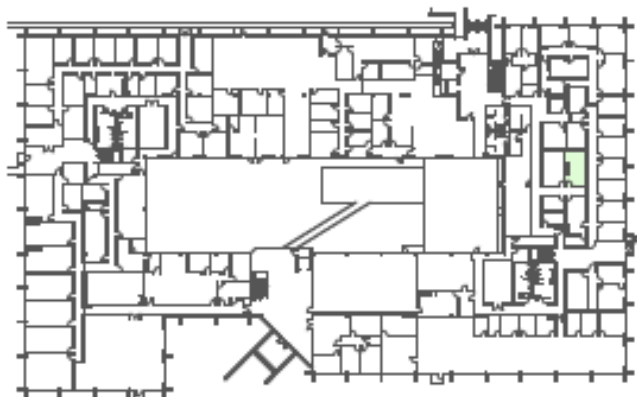


4021 AMBASSADOR CAFFERY PKWY
LAFAYETTE, LA 70503



ZILER
ARCHITECTS
A PROFESSIONAL
ARCHITECTURAL
CORPORATION
JAMES D. ZILER, ARCHITECT
BRAD R. PROBRASH, ARCHITECT
101 Oaks Boulevard
Lafayette, Louisiana 70503
Ph: 337-269-6326

FIRST FLOOR



CONTACT:
CHAMPION REAL ESTATE SERVICES
100 RUE IBERVILLE, SUITE 200
LAFAYETTE, LA 70508
(337) 593-0444

07/16/24