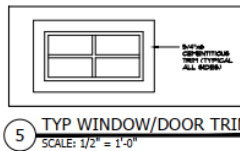
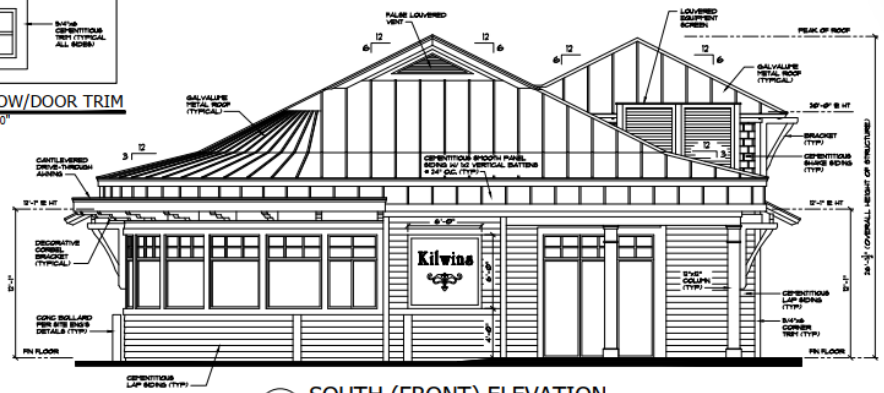


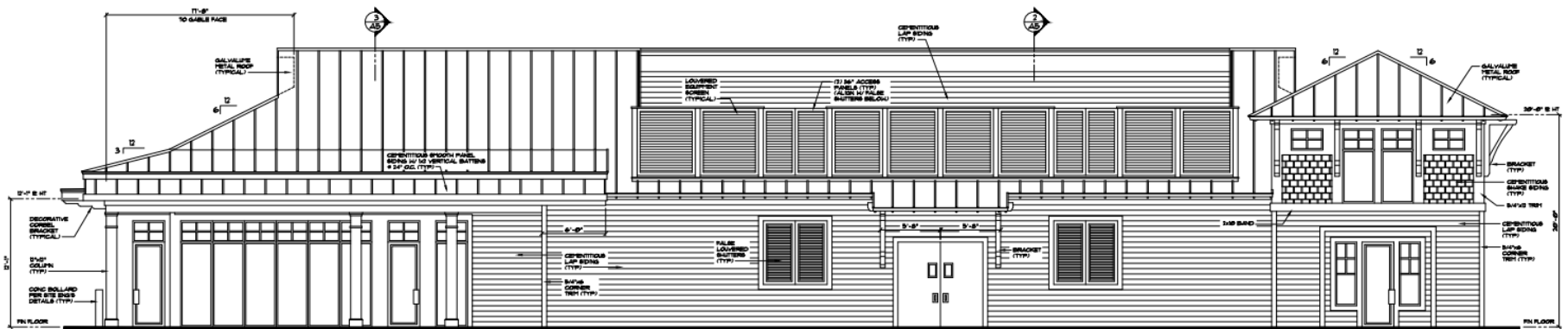
2 NORTH (REAR) ELEVATION
SCALE: 1/4" = 1'-0"



5 TYP WINDOW/DOOR TRIM
SCALE: 1/2" = 1'-0"



1 SOUTH (FRONT) ELEVATION
SCALE: 1/4" = 1'-0"



3 EAST (RIGHT) ELEVATION