

4th Floor

THIRTY VESEY

INCREDIBLE LIGHT & VIEWS AT THE
CORNER OF CHURCH STREET



PARTIAL 4TH FLOOR

Size.....**2,598 RSF**
Term.....**Negotiable**
Possession.....**Immediate**
Asking Rent.....**Please Inquire**

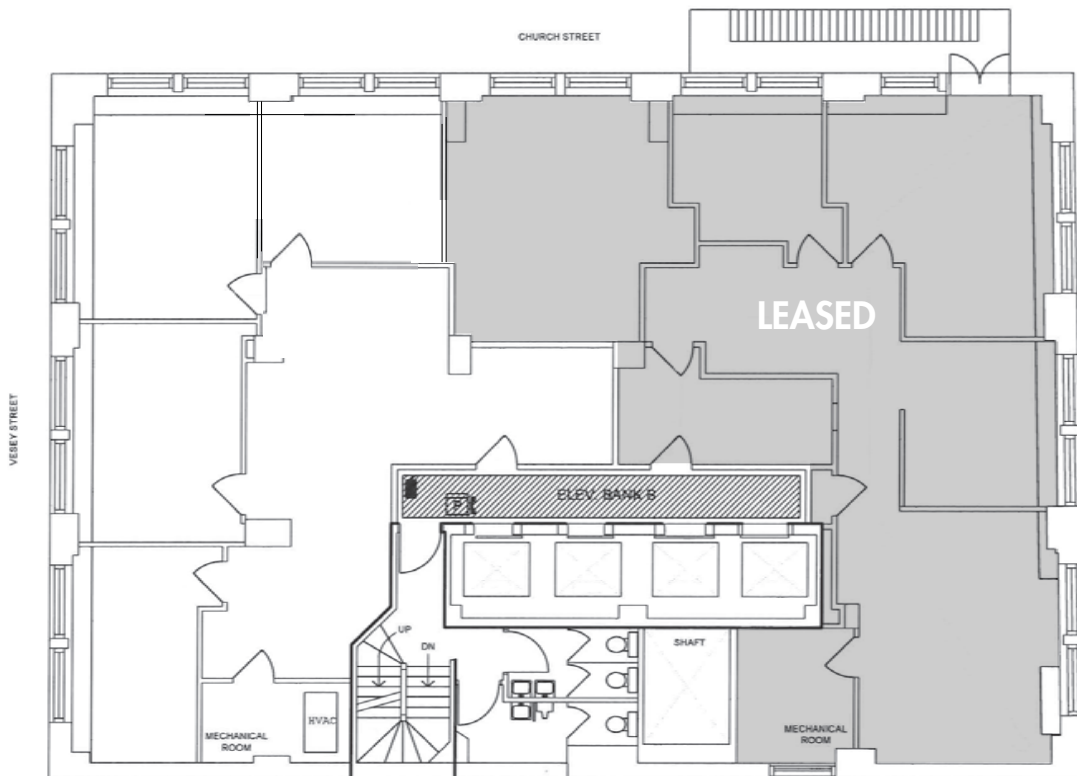
NOTES:

- Bright corner with unobstructed views overlooking the World Trade Center and Oculus
- Modern installation with 4 windowed offices
- Landlord is open to modifying the layout and installing a wet pantry
- Attended lobby with new elevator cabs
- Convenient to multiple subway lines and the PATH





PARTIAL 4TH FLOOR



THIRTY VESEY

PLEASE CONTACT:

James Costello **Trisha Etienne**
646.599.2391 646.201.5144
james@sinvin.com trisha@sinvin.com

 **SINVIN**
COMMERCIAL REAL ESTATE & ADVISORY



 **SINVIN**
COMMERCIAL REAL ESTATE & ADVISORY